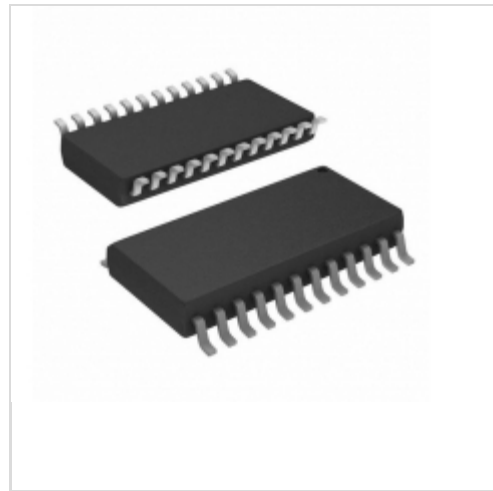


A6279ELW-T



Allegro MicroSystems, LLC.
IC LED DRIVER LIN 75.5MA 24SOIC
Lead free / RoHS Compliant
Integrated Circuits (ICs)

[A6279ELW-T.pdf](#)

Buy Now

We can supply A6279ELW-T, use the request quote form to request A6279ELW-T price and lead time. Zeano is a professional electronic components distributor. With 3+ Million line items of available electronic components can ship in short lead-time, over 250 thousand part numbers of electronic components in stock for immediately delivery, which may include part number A6279ELW-T. The price and lead time for A6279ELW-T depending on the quantity required and warehouse location. Contact us and our sales representative will provide you price. We look forward to work with you.

Shopping Process

1

Confirm the product

2

submit the order

3

payment

4

wait for delivery

5

receive the goods

Specifications

Voltage - Supply (Min):	3V
Voltage - Supply (Max):	5.5V
Voltage - Output:	-
Type:	Linear
Topology:	Shift Register
Supplier Device Package:	24-SOIC
Series:	-
Packaging:	Tube
Package / Case:	24-SOIC (0.295", 7.50mm Width)
Operating Temperature:	-40°C ~ 85°C (TA)
Number of Outputs:	16
Mounting Type:	Surface Mount
Internal Switch(s):	Yes
Frequency:	25MHz
Dimming:	-
Current - Output / Channel:	75.5mA
Applications:	-

Related products



A628-11
ADAPTER PROGRAMMER 56-TSOP
[Xeltek](#)

RFQ



A6279ELPT-T
[ALLEGRO](#)

RFQ



A628-17
ADAPTER PROGRAMMER 56-TSOP
[Xeltek](#)

RFQ



A628-12
ADAPTER PROGRAMMER 56-TSOP
[Xeltek](#)

RFQ



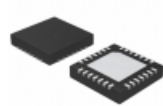
A6279ELPTR-T
IC LED DRIVER LIN 75.5MA 24TSSOP
[Allegro MicroSystems, LLC](#)

RFQ



A6279ELPT
[ALLEGRO](#)

RFQ



A6279EETTR-T
IC LED DRIVER LIN 75.5MA 28QFN
[Allegro MicroSystems, LLC](#)

RFQ



A6279ELWTR-T
IC LED DRIVER LIN 75.5MA 24SOIC
[Allegro MicroSystems, LLC](#)

RFQ



A628-14
ADAPTER PROGRAMMER 56-TSOP
[Xeltek](#)

RFQ



A6279ELP-T
IC LED DRIVER LIN 75.5MA 24TSSOP
[Allegro MicroSystems, LLC](#)

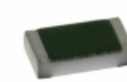
RFQ

Guess You May Looking For



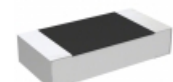
HRG3216P-93R1-D-T1
RES SMD 93.1 OHM 0.5% 1W 1206
[Susumu](#)

RFQ



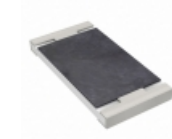
TNPW060351K1BEEN
RES SMD 51.1KOHM 0.1% 1/10W 0603
[Vishay Dale](#)

RFQ



RP73D2B16K2BTF
RES SMD 16.2K OHM 0.1% 1/4W 1206
[TE Connectivity Passive Product](#)

RFQ



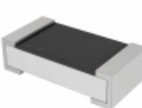
RT2512CKB0714RL
RES SMD 14 OHM 0.25% 3/4W 2512
[Yageo](#)

RFQ



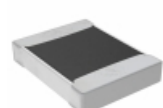
CRCW25121K78FHEGP
RES SMD 1.78K OHM 1% 1W 2512
[Vishay Dale](#)

RFQ



PE0603DRF7T0R005L
RES SMD 0.005 OHM 0.5% 1/3W 0603
[Yageo](#)

RFQ



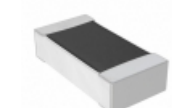
TNPW12102K49BETA
RES SMD 2.49K OHM 0.1% 1/3W 1210
[Vishay Dale](#)

RFQ



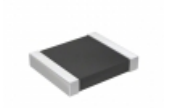
SM6227FT68R0
RES SMD 68 OHM 1% 3W 6227
[Stackpole Electronics Inc.](#)

RFQ



RNCF0603ATY4K70
RES SMD 4.7KOHM 0.05% 1/10W 0603
[Stackpole Electronics Inc.](#)

RFQ



RT1210WRB07261RL
RES SMD 261 OHM 0.05% 1/4W 1210
[Yageo](#)

RFQ