

BMI-S-212-C



Laird Technologies - EMI

BLS 2PSH CV SNSAT LP
Lead free / RoHS Compliant
RF/IF and RFID

- 1.BMI-S-212-C.pdf
- 2.BMI-S-212-C.pdf

Buy Now

Out Stock

0 pcs

Minimum:1

Multiples:100

Manufacturer lead time 10 weeks

We can supply Laird Technologies - EMI BMI-S-212-C, use the request quote form to request BMI-S-212-C price, Laird Technologies - EMI Datasheet PDF and lead time. Zeanoit.com is a professional electronic components distributor. With 3+ Million line items of available electronic components can ship in short lead-time, over 250 thousand part numbers of electronic components in stock for immediately delivery, which may include part number BMI-S-212-C. The price and lead time for BMI-S-212-C depending on the quantity required, availability and warehouse location.

Shopping Process



Confirm the product



submit the order



payment



wait for delivery



receive the goods

Specifications

Width - Overall:	-
Ventilation:	-
Type:	Cover
Series:	-
Packaging:	Bulk
Mounting Type:	Snap Fit
Length - Overall:	-
Height - Overall:	-

Related products



BMI-S-226-F
BLS 2PSH FRM SNSAT LP
[Laird Technologies EMI](#)

RFQ



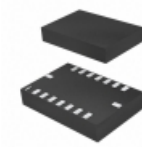
BMI-S-230-C
BOARD SHIELD 2INX1.5IN COVER
[Laird Technologies EMI](#)

RFQ



BMI-S-226-C
BLS 2PSH CV SNSAT LP
[Laird Technologies EMI](#)

RFQ



BMI055
IMU ACCEL/GYRO I2C/SPI 16LGA
[Bosch Sensortec](#)

RFQ



BMI-S-230-F-R
BOARD SHIELD 2INX1.5IN FRAME
[Laird Technologies EMI](#)

RFQ



BMI-S-208-F
BLS 2PSH FRM SNSAT TNR
[Laird Technologies EMI](#)

RFQ



BMI-S-209-C
BOARD SHIELD COVER
[Laird Technologies EMI](#)

RFQ



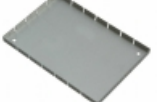
BMI-S-209-F
BOARD SHIELD FRAME
[Laird Technologies EMI](#)

RFQ



BMI-S-210-F
BOARD SHIELD 1.201X1.732" FRAME
[Laird Technologies EMI](#)

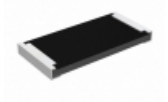
RFQ



BMI-S-210-C
BOARD SHIELD 1.201X1.732" COVER
[Laird Technologies EMI](#)

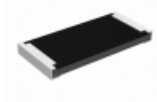
RFQ

Guess You May Looking For



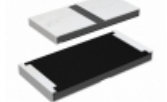
RCP2512B180RJEC
RES SMD 180 OHM 5% 22W 2512
[Vishay Dale](#)

RFQ



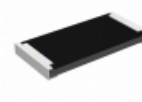
RCP2512B68R0GS2
RES SMD 68 OHM 2% 22W 2512
[Vishay Dale](#)

RFQ



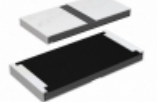
RCP2512W270RJEC
RES SMD 270 OHM 5% 22W 2512
[Vishay Dale](#)

RFQ



RCP2512B750RGS2
RES SMD 750 OHM 2% 22W 2512
[Vishay Dale](#)

RFQ



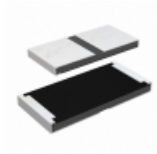
RCP2512W13R0JEC
RES SMD 13 OHM 5% 22W 2512
[Vishay Dale](#)

RFQ



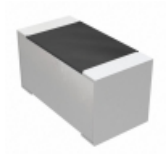
RCP0505W750RGEC
RES SMD 750 OHM 2% 5W 0505
[Vishay Dale](#)

RFQ



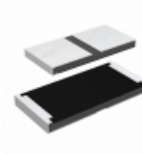
RCP2512W39R0JS2
RES SMD 39 OHM 5% 22W 2512
[Vishay Dale](#)

RFQ



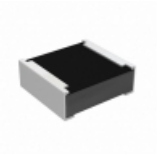
M55342E12B1B82RT5
RES SMD 1.82KOHM 0.1% 1/10W 0603
[Vishay Dale](#)

RFQ



RCP2512W2K00GEC
RES SMD 2K OHM 2% 22W 2512
[Vishay Dale](#)

RFQ



RCP0505B16R0JS2
RES SMD 16 OHM 5% 5W 0505
[Vishay Dale](#)

RFQ