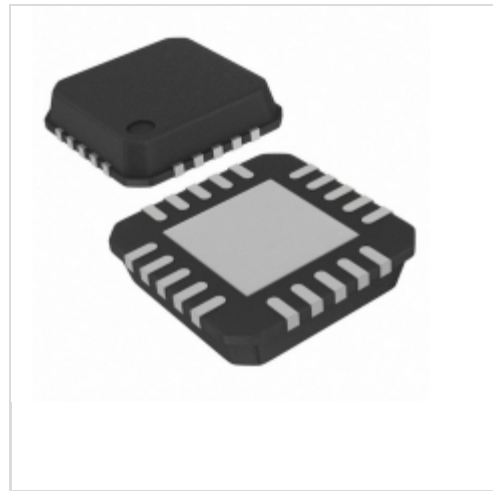


CC2500-RTR1



N/A
 IC RF TXRX ISM>1GHZ 20-VFQFN
 Lead free / RoHS Compliant
 RF/IF and RFID

[Buy Now](#)

Images are for reference only.
 See Product Specifications for product details.
 If you are interested to buy CC2500-RTR1,Just Email us.
 Sales@zeanoit.com
 our sales team will reply you within 24 hours

Shopping Process

1

Confirm the product

2

submit the order

3

payment

4

wait for delivery

5

receive the goods

Specifications

Voltage - Supply:	1.8 V ~ 3.6 V
Type:	TxRx Only
Series:	-
Serial Interfaces:	SPI
Sensitivity:	-104dBm
RF Family/Standard:	General ISM > 1GHZ
Protocol:	-
Power - Output:	1dBm
Packaging:	Tape & Reel (TR)
Package / Case:	20-VFQFN Exposed Pad
Operating Temperature:	-40°C ~ 85°C
Modulation:	2FSK, GFSK, MSK, OOK
Memory Size:	-
Frequency:	2.4GHz
Data Rate (Max):	500kBaud
Current - Transmitting:	11.1mA ~ 21.5mA
Current - Receiving:	13.3mA ~ 19.6mA

Related products



CC25-2405SF-E
 CONV DC/DC 25W SINGL 24V 5V PCB
[TDK-Lambda Americas Inc.](#)

[RFQ](#)



CC2500RTKG3
 IC RF TXRX ISM>1GHZ 20-VFQFN
[N/A](#)

[RFQ](#)



CC2500RGP
 IC RF TXRX ISM>1GHZ 20-VFQFN
[N/A](#)

[RFQ](#)



CC2500
[TI](#)

[RFQ](#)



CC2500RTR1
 IC RF TXRX ISM>1GHZ 20-VFQFN
[N/A](#)

[RFQ](#)



CC2500-CC2550DK
 KIT DEV FOR CC2500/CC2550
[N/A](#)

[RFQ](#)



CC2500-RTKR
[TI](#)

[RFQ](#)



CC25-2405SR-E
 CONV DC/DC 25W SINGL 24V 5V SMD
[TDK-Lambda Americas Inc.](#)

[RFQ](#)



CC2500RGPR
 IC RF TXRX ISM>1GHZ 20-VFQFN
[N/A](#)

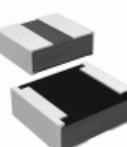
[RFQ](#)



CC2500EMK
 KIT EVAL MODULE FOR CC2500
[N/A](#)

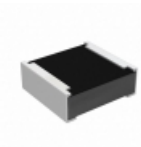
[RFQ](#)

Guess You May Looking For



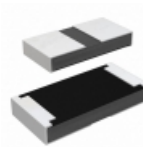
RCP0505W1K30JS6
 RES SMD 1.3K OHM 5% 5W 0505
[Vishay Dale](#)

[RFQ](#)



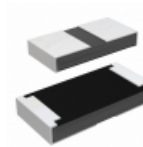
RCP0505B130RJWB
 RES SMD 130 OHM 5% 5W 0505
[Vishay Dale](#)

[RFQ](#)



RCP1206W33R0JS6
 RES SMD 33 OHM 5% 11W 1206
[Vishay Dale](#)

[RFQ](#)



RCP1206W91R0JS6
 RES SMD 91 OHM 5% 11W 1206
[Vishay Dale](#)

[RFQ](#)



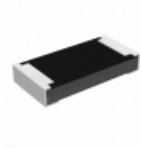
RCP0603W56R0GS6
 RES SMD 56 OHM 2% 3.9W 0603
[Vishay Dale](#)

[RFQ](#)



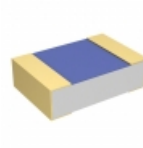
RCP0603W82R0GED
 RES SMD 82 OHM 2% 3.9W 0603
[Vishay Dale](#)

[RFQ](#)



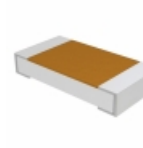
RCP1206B270RGET
 RES SMD 270 OHM 2% 11W 1206
[Vishay Dale](#)

[RFQ](#)



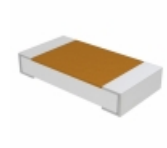
CHPHT0805K1001FGTA
 RES SMD 1K OHM 1% 0.02W 0805
[Vishay Sfernice](#)

[RFQ](#)



D55342E07B16B5RWS
 RES SMD 16.5K OHM 0.1% 1/4W 1206
[Vishay Dale](#)

[RFQ](#)



D55342E07B84D5RWS
 RES SMD 84.5 OHM 1% 1/4W 1206
[Vishay Dale](#)

[RFQ](#)