

**K2400G**



**Hamlin / Littelfuse**  
**SIDAC 220-250V 1A DO15**  
 Lead free / RoHS Compliant  
 Discrete Semiconductor Products

- [1.K2400G.pdf](#)
- [2.K2400G.pdf](#)

**Buy Now**

We can supply Hamlin / Littelfuse K2400G, use the request quote form to request K2400G price, Hamlin / Littelfuse Datasheet PDF and lead time. Zeanoit.com is a professional electronic components distributor. With 3+ Million line items of available electronic components can ship in short lead-time, over 250 thousand part numbers of electronic components in stock for immediately delivery, which may include part number K2400G. The price and lead time for K2400G depending on the quantity required, availability and warehouse location.

**Out Stock**  
**0 pcs**  
 Minimum:1  
 Multiples:100  
 Manufacturer lead time 10 weeks

PRICE	
1 pcs	\$1.13
10 pcs	\$1.004
25 pcs	\$0.907
100 pcs	\$0.794
250 pcs	\$0.697
500 pcs	\$0.616
1000 pcs	\$0.486
2500 pcs	\$0.454
5000 pcs	\$0.431

Shopping Process

**1**

**Confirm the product**

**2**

**submit the order**

**3**

**payment**

**4**

**wait for delivery**

**5**

**receive the goods**

Specifications

<b>Voltage - Breakover:</b>	220 ~ 250V
<b>Supplier Device Package:</b>	DO-15
<b>Series:</b>	-
<b>Packaging:</b>	Bulk
<b>Package / Case:</b>	DO-204AC, DO-15, Axial
<b>Operating Temperature:</b>	-40°C ~ 125°C (TJ)
<b>Current - Peak Output:</b>	1A
<b>Current - Hold (Ih) (Max):</b>	150mA
<b>Current - Breakover:</b>	10µA

Related products



**K2400F2**  
 SIDAC 220-250V 1A TO92  
[Littelfuse Inc.](#)

RFQ



**K2400EH70RP3**  
 SIDAC 220-250V 1A TO92  
[Littelfuse Inc.](#)

RFQ



**K2400GHU**  
 SIDAC 220-250V 1A DO15  
[Littelfuse Inc.](#)

RFQ



**K2400GHRP**  
 SIDAC 220-250V 1A DO15  
[Littelfuse Inc.](#)

RFQ



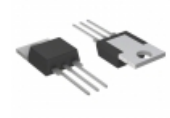
**K2400F23RP**  
 SIDAC 220-250V 1A TO92  
[Littelfuse Inc.](#)

RFQ



**K2400GH**  
 SIDAC 220-250V 1A DO15  
[Littelfuse Inc.](#)

RFQ



**K2400F1**  
 SIDAC 220-250V 1A TO92  
[Littelfuse Inc.](#)

RFQ



**K2400GAP**  
 SIDAC 220-250V 1A DO15  
[Littelfuse Inc.](#)

RFQ



**K2400F23**  
 SIDAC 220-250V 1A TO92  
[Littelfuse Inc.](#)

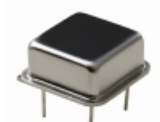
RFQ



**K2400GHAP**  
 SIDAC 220-250V 1A DO15  
[Littelfuse Inc.](#)

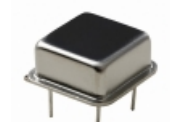
RFQ

Guess You May Looking For



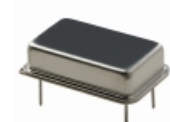
**CPPLC4-LT76P**  
 OSC PROG CMOS 3.3V STBY 100PPM  
[Cardinal Components Inc.](#)

RFQ



**CPPC4-HT0RT**  
 OSC PROG CMOS 5V TRI ST 25PPM TH  
[Cardinal Components Inc.](#)

RFQ



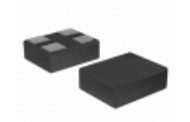
**CPPLT1-LT0PT**  
 OSC PROG TTL 3.3V TRI ST 50PPM  
[Cardinal Components Inc.](#)

RFQ



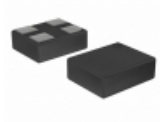
**503GBA-ADAF**  
 OSC PROG LVCMOS 1.7V-3.6V EN/DS  
[Silicon Labs](#)

RFQ



**DSC6001JI2A-PROGRAMMABLE**  
 PROG OSC 1MHZ-80MHZ CMOS  
[Microchip Technology](#)

RFQ



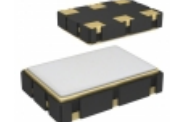
**DSC6011JI1A-PROGRAMMABLE**  
 PROG OSC 1MHZ-80MHZ CMOS  
[Microchip Technology](#)

RFQ



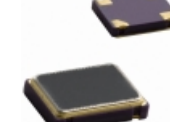
**591AC-CDG**  
 OSC PROG LVPECL 3.3V EN/DS 20PPM  
[Silicon Labs](#)

RFQ



**511MCB-BBAG**  
 OSC PROG CMOS 3.3V EN/DS 20PPM  
[Silicon Labs](#)

RFQ



**CPPFXC7-HZ7RP**  
 OSC PROG CMOS 5V STBY 25PPM SMD  
[Cardinal Components Inc.](#)

RFQ



**590UA-DDG**  
 OSC PROG CML 2.5V EN/DS 50PPM  
[Silicon Labs](#)

RFQ