

S-1009C37I-M5T1U



SII Semiconductor Corporation

IC VOLT DETECTOR

Lead free / RoHS Compliant

Integrated Circuits (ICs)

[S-1009C37I-M5T1U.pdf](#)

Buy Now

Out Stock

0 pcs

Minimum:1

Multiples:100

Manufacturer lead time 10 weeks

part#S-1009C37I-M5T1U is available, see description of S-1009C37I-M5T1U as below

use the request quote form to request S-1009C37I-M5T1U price and lead time.

Buy Electronic Components at zeanoit.com .we are an independent distributor of electronic components with extensive inventory in stock.

The price and lead time for S-1009C37I-M5T1U depending on the quantity required, availability and warehouse location.Contact us today and our sales team will send you quotation soon.

Email: sales@zeanoit.com

Shopping Process

1

Confirm the product

2

submit the order

3

payment

4

wait for delivery

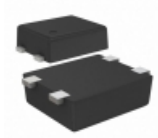
5

receive the goods

Specifications

Voltage - Threshold:	3.7V
Type:	Voltage Detector
Supplier Device Package:	SOT-23-5
Series:	S-1009
Reset Timeout:	-
Reset:	Active Low
Packaging:	Tape & Reel (TR)
Package / Case:	SC-74A, SOT-753
Output:	Push-Pull, Totem Pole
Operating Temperature:	-40°C ~ 85°C (TA)
Number of Voltages Monitored:	1
Mounting Type:	Surface Mount

Related products



S-1009C38I-I4T1U

IC VOLT DETECTOR

[SII Semiconductor Corporation](#)

RFQ



S-1009C39I-I4T1U

IC VOLT DETECTOR

[SII Semiconductor Corporation](#)

RFQ



S-1009C38I-M5T1U

IC VOLT DETECTOR

[SII Semiconductor Corporation](#)

RFQ



S-1009C37I-N4T1U

IC VOLT DETECTOR

[SII Semiconductor Corporation](#)

RFQ



S-1009C38I-N4T1U

IC VOLT DETECTOR

[SII Semiconductor Corporation](#)

RFQ



S-1009C36I-M5T1U

IC VOLT DETECTOR

[SII Semiconductor Corporation](#)

RFQ

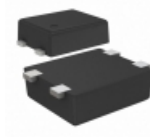


S-1009C36I-N4T1U

IC VOLT DETECTOR

[SII Semiconductor Corporation](#)

RFQ



S-1009C37I-I4T1U

IC VOLT DETECTOR

[SII Semiconductor Corporation](#)

RFQ



S-1009C36H-M5T2U

[SII](#)

RFQ



S-1009C36I-I4T1U

IC VOLT DETECTOR

[SII Semiconductor Corporation](#)

RFQ

Guess You May Looking For



9T04021A7151CBHF3

RES SMD 7.15K OHM 1/16W 0402

[Yageo](#)

RFQ



MCR03EZPJ620

RES SMD 62 OHM 5% 1/10W 0603

[Rohm Semiconductor](#)

RFQ



RG1608P-2431-B-T1

RES SMD 2.43KOHM 0.1% 1/10W 0603

[Susumu](#)

RFQ

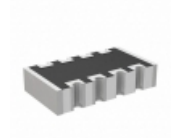


RG1608P-1541-C-T5

RES SMD 1.54K OHM 1/10W 0603

[Susumu](#)

RFQ



TC164-FR-0782KL

RES ARRAY 4 RES 82K OHM 1206

[Yageo](#)

RFQ



RNF14FTC95R3

RES 95.3 OHM 1/4W 1% AXIAL

[Stackpole Electronics Inc.](#)

RFQ



MBB02070C1609FCT00

RES 16 OHM 0.6W 1% AXIAL

[Vishay BC Components](#)

RFQ



LR2F620K

RES 620K OHM 3/4W 1% AXIAL

[TE Connectivity Passive Product](#)

RFQ

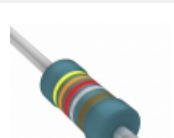


CMF55100K00FKRE

RES 100K OHM 1/2W 1% AXIAL

[Vishay Dale](#)

RFQ



MBA02040C4328FRP00

RES 4.32 OHM 0.4W 1% AXIAL

[Vishay BC Components](#)

RFQ