

## XC1701SO20C



Xilinx

IC PROM SER C-TEMP 1K 20-SOIC  
Contains lead / RoHS non-compliant  
Integrated Circuits (ICs)

[XC1701SO20C.pdf](#)

**Buy Now**

We can supply Xilinx XC1701SO20C, use the request quote form to request XC1701SO20C price, Xilinx Datasheet PDF and lead time. Zeanoit.com is a professional electronic components distributor. With 3+ Million line items of available electronic components can ship in short lead-time, over 250 thousand part numbers of electronic components in stock for immediately delivery, which may include part number XC1701SO20C. The price and lead time for XC1701SO20C depending on the quantity required, availability and warehouse location.

### Shopping Process

1

Confirm the product

2

submit the order

3

payment

4

wait for delivery

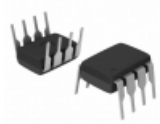
5

receive the goods

### Specifications

<b>Voltage - Supply:</b>	4.75 V ~ 5.25 V
<b>Supplier Device Package:</b>	20-SOIC
<b>Series:</b>	-
<b>Programmable Type:</b>	OTP
<b>Packaging:</b>	Tube
<b>Package / Case:</b>	20-SOIC (0.295", 7.50mm Width)
<b>Operating Temperature:</b>	0°C ~ 70°C
<b>Memory Size:</b>	1Mb

### Related products



**XC1701PD8I**  
IC PROM SER I-TEMP 1K 8-DIP  
[Xilinx Inc.](#)

RFQ



**XC1701SO20I**  
IC PROM SER I-TEMP 1K 20-SOIC  
[Xilinx Inc.](#)

RFQ



**XC1701PD8C**  
IC PROM SER C-TEMP 1K 8-DIP  
[Xilinx Inc.](#)

RFQ



**XC1701PC20C**  
IC PROM SER C-TEMP 1K 20-PLCC  
[Xilinx Inc.](#)

RFQ



**XC1701SI**  
in stock  
[XILINX](#)

RFQ



**XC1701PC20I**  
IC PROM SER I-TEMP 1K 20-PLCC  
[Xilinx Inc.](#)

RFQ



**XC1702LPC44I**  
Configuration PROMs  
[XILINX](#)

RFQ



**XC1702L-PC44C**  
in stock  
[XILINX](#)

RFQ



**XC1702LVQ44C**  
Configuration PROMs  
[XILINX](#)

RFQ



**XC1702LPC44C**  
Configuration PROMs  
[XILINX](#)

RFQ

### Guess You May Looking For



**AT1206DRE071KL**  
RES SMD 1K OHM 0.5% 1/4W 1206  
[Yageo](#)

RFQ



**AT1206DRE0726K1L**  
RES SMD 26.1K OHM 0.5% 1/4W 1206  
[Yageo](#)

RFQ



**RG2012P-2263-B-T5**  
RES SMD 226K OHM 0.1% 1/8W 0805  
[Susumu](#)

RFQ



**CRGH2010F1K13**  
RES SMD 1.13K OHM 1% 1W 2010  
[TE Connectivity Passive Product](#)

RFQ



**AT1206DRE0790K9L**  
RES SMD 90.9K OHM 0.5% 1/4W 1206  
[Yageo](#)

RFQ



**RT1206CRE072K7L**  
RES SMD 2.7K OHM 0.25% 1/4W 1206  
[Yageo](#)

RFQ



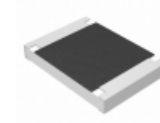
**RT1206CRE0733K2L**  
RES SMD 33.2KOHM 0.25% 1/4W 1206  
[Yageo](#)

RFQ



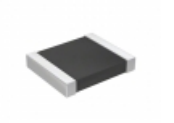
**RG2012P-2610-B-T5**  
RES SMD 261 OHM 0.1% 1/8W 0805  
[Susumu](#)

RFQ



**ERJ-S12J821U**  
RES SMD 820 OHM 5% 3/4W 1812  
[Panasonic Electronic Components](#)

RFQ



**RT1210FRD07182KL**  
RES SMD 182K OHM 1% 1/4W 1210  
[Yageo](#)

RFQ