

## MAX6366PKA31+T



[Maxim Integrated](#)

IC SUPERVISOR MPU LP SOT23-8

Lead free / RoHS Compliant

Integrated Circuits (ICs)

[1.MAX6366PKA31+T.pdf](#)

[2.MAX6366PKA31+T.pdf](#)

**Buy Now**

**Out Stock**

**0 pcs**

Minimum:1

Multiples:100

Manufacturer lead time 10 weeks

### PRICE

1 pcs	\$7.54
10 pcs	\$7.11
25 pcs	\$5.69
50 pcs	\$5.41
100 pcs	\$4.98
250 pcs	\$4.72
500 pcs	\$3.56

part#MAX6366PKA31+T is available, see description of MAX6366PKA31+T as below .

use the request quote form to request MAX6366PKA31+T price and lead time.

Buy Electronic Components at zeanoit.com .we are an independent distributor of electronic components with extensive inventory in stock.

The price and lead time for MAX6366PKA31+T depending on the quantity required, availability and warehouse location.Contact us today and our sales team will send you quotation soon.

Email: sales@zeanoit.com

## Shopping Process

**1**

**Confirm the product**

**2**

**submit the order**

**3**

**payment**

**4**

**wait for delivery**

**5**

**receive the goods**

## Specifications

<b>Voltage - Threshold:</b>	3.08V
<b>Type:</b>	Battery Backup Circuit
<b>Supplier Device Package:</b>	SOT-23-8
<b>Series:</b>	-
<b>Reset Timeout:</b>	150 ms Minimum
<b>Reset:</b>	Active Low
<b>Packaging:</b>	Tape & Reel (TR)
<b>Package / Case:</b>	SOT-23-8
<b>Output:</b>	Open Drain or Open Collector
<b>Operating Temperature:</b>	-40°C ~ 85°C (TA)
<b>Number of Voltages Monitored:</b>	1
<b>Mounting Type:</b>	Surface Mount

## Related products



**MAX6366PKA26-T**

in stock  
[MAXIM](#)

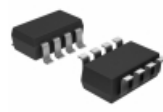
**RFQ**



**MAX6366PKA23-T**

in stock  
[MAXIM](#)

**RFQ**



**MAX6366PKA26+T**

IC SUPERVISOR MPU LP SOT23-8  
[Maxim Integrated](#)

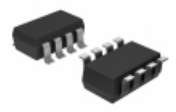
**RFQ**



**MAX6366PKA29-T**

in stock  
[MAXIM](#)

**RFQ**



**MAX6366PKA29+T**

IC SUPERVISOR MPU LP SOT23-8  
[Maxim Integrated](#)

**RFQ**



**MAX6366PKA46+T**

IC SUPERVISOR MPU LP SOT23-8  
[Maxim Integrated](#)

**RFQ**



**MAX6366PKA46-T**

in stock  
[MAXIM](#)

**RFQ**



**MAX6366PKA44-T**

in stock  
[MAXIM](#)

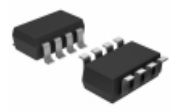
**RFQ**



**MAX6366PKA31-T**

in stock  
[MAXIM](#)

**RFQ**



**MAX6366PKA44+T**

IC SUPERVISOR MPU LP SOT23-8  
[Maxim Integrated](#)

**RFQ**

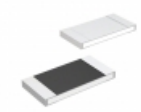
## Guess You May Looking For



**RR1220P-4221-B-M-T5**

RES SMD 4.22KOHM 0.1% 1/10W 0805  
[Susumu](#)

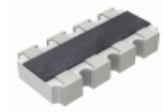
**RFQ**



**MCR25JZH4871**

RES SMD 4.87K OHM 1% 1/4W 1210  
[Rohm Semiconductor](#)

**RFQ**



**AF164-FR-07180KL**

RES ARRAY 4 RES 180K OHM 1206  
[Yageo](#)

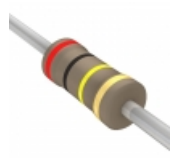
**RFQ**



**CTR10000FFKGANHWS**

RES NETWORK 2 RES 1K OHM 0303  
[Vishay Electro-Films](#)

**RFQ**



**CFR-25JB-52-200K**

RES 200K OHM 1/4W 5% AXIAL  
[Yageo](#)

**RFQ**



**RNMF14FTD15K8**

RES 15.8K OHM 1/4W 1% AXIAL  
[Stackpole Electronics Inc.](#)

**RFQ**



**FRN12JT5R60**

RES FUSE 5.6 OHM 1/2W 5% AXIAL  
[Stackpole Electronics Inc.](#)

**RFQ**



**CMF55100R00FKR6**

RES 100 OHM 1/2W 1% AXIAL  
[Vishay Dale](#)

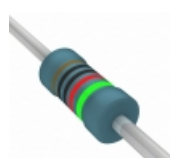
**RFQ**



**CA0002R3300JE66**

RES 0.33 OHM 2W 5% AXIAL  
[Vishay Dale](#)

**RFQ**



**MBB02070D1002DRP00**

RES 10K OHM 0.6W 0.5% AXIAL  
[Vishay BC Components](#)

**RFQ**