

FPF2200



Fairchild/ON Semiconductor

IC LOAD SWITCH 500MA 6-MICROFET

Lead free / RoHS Compliant

Integrated Circuits (ICs)

[FPF2200.pdf](#)

Buy Now

Images are for reference only.

See Product Specifications for product details.

If you are interested to buy FPF2200,Just Email us.

Sales@zeanoit.com

our sales team will reply you within 24 hours

Out Stock

0 pcs

Minimum:1

Multiples:100

Manufacturer lead time 10 weeks

PRICE

3000 pcs	\$0.42
6000 pcs	\$0.399
15000 pcs	\$0.384

Shopping Process

1

Confirm the product

2

submit the order

3

payment

4

wait for delivery

5

receive the goods

Specifications

Voltage - Supply (Vcc/Vdd):	Not Required
Voltage - Load:	1.8 V ~ 5.5 V
Switch Type:	General Purpose
Supplier Device Package:	6-MicroFET (2x2)
Series:	-
Rds On (Typ):	140 mOhm
Ratio - Input:Output:	1:1
Packaging:	Tape & Reel (TR)
Package / Case:	6-VDFN Exposed Pad
Output Type:	P-Channel
Output Configuration:	High Side
Operating Temperature:	-40°C ~ 85°C (TA)
Number of Outputs:	1
Interface:	On/Off
Input Type:	Non-Inverting
Features:	Auto Restart, Load Discharge, Status Flag
Fault Protection:	Current Limiting (Fixed), Over Temperature, UVLO
Current - Output (Max):	500mA

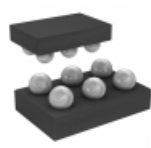
Related products



FPF2202

IC LOAD SWITCH 500MA 6MICROFET
[Fairchild/ON Semiconductor](#)

RFQ



FPF2195BUCX

IC LOAD SWITCH FULL FUNCT 6WLCSP
[Fairchild/ON Semiconductor](#)

RFQ



FPF2215

IC LOAD SWITCH MICROFET6
[Fairchild/ON Semiconductor](#)

RFQ



FPF2201

IC LOAD SWITCH 500MA 6-MICROFET
[Fairchild/ON Semiconductor](#)

RFQ



FPF2195UCX

[FAIRCHILD](#)

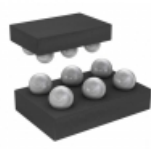
RFQ



FPF2213

IC LOAD SWITCH MICROFET6
[Fairchild/ON Semiconductor](#)

RFQ



FPF2194

IC LOAD SWITCH FULL FUNCT 6WLCSP
[Fairchild/ON Semiconductor](#)

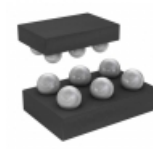
RFQ



FPF2214

IC LOAD SWITCH MICROFET6
[Fairchild/ON Semiconductor](#)

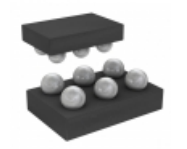
RFQ



FPF2195

IC LOAD SWITCH FULL FUNCT 6WLCSP
[Fairchild/ON Semiconductor](#)

RFQ



FPF2193

IC LOAD SWITCH FULL FUNCT 6WLCSP
[Fairchild/ON Semiconductor](#)

RFQ

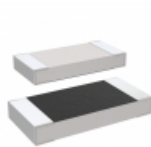
Guess You May Looking For



RW1S5CAR010JE

RES SMD 0.01 OHM 5% 1.5W J LEAD
[Ohmite](#)

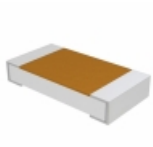
RFQ



M55342H03B29B8RT5

RES SMD 29.8K OHM 0.1% 1/5W 1005
[Vishay Dale](#)

RFQ



D55342E07B6B81RT5

RES SMD 6.81K OHM 0.1% 1/4W 1206
[Vishay Dale](#)

RFQ



RW1S0BAR100JT

RES SMD 0.1 OHM 5% 1W J LEAD
[Ohmite](#)

RFQ



RCP0603W1K60GET

RES SMD 1.6K OHM 2% 3.9W 0603
[Vishay Dale](#)

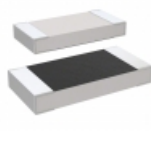
RFQ



D55342K07B61B9RWS

RES SMD 61.9K OHM 0.1% 1/4W 1206
[Vishay Dale](#)

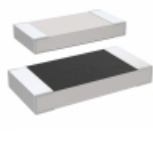
RFQ



M55342H03B16E2RWS

RES SMD 16.2K OHM 1% 1/5W 1005
[Vishay Dale](#)

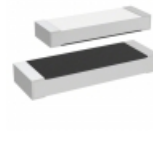
RFQ



M55342H03B2B49RWS

RES SMD 2.49K OHM 0.1% 1/5W 1005
[Vishay Dale](#)

RFQ



M55342K05B243BRWS

RES SMD 243KOHM 0.1% 0.225W 2208
[Vishay Dale](#)

RFQ



Y11211K15000A0R

RES SMD 1.15K OHM 1/4W J LEAD
[Vishay Foil Resistors \(Division of Vishay Preciso\)](#)

RFQ

