

7016L25PF8

IDT (Integrated Device Technology)

IC SRAM 144KBIT 25NS 80TQFP
 Contains lead / RoHS non-compliant
 Integrated Circuits (ICs)

[7016L25PF8.pdf](#)

Buy Now

Images are for reference only.

See Product Specifications for product details.

If you are interested to buy 7016L25PF8,Just Email us.

Sales@zeanoit.com

our sales team will reply you within 24 hours

Out Stock

0 pcs

Minimum:1

Multiples:100

Manufacturer lead time 10 weeks

Shopping Process

1

Confirm the product

2

submit the order

3

payment

4

wait for delivery

5

receive the goods

Specifications

Voltage - Supply:	4.5 V ~ 5.5 V
Supplier Device Package:	80-TQFP (14x14)
Speed:	25ns
Series:	-
Packaging:	Tape & Reel (TR)
Package / Case:	80-LQFP
Operating Temperature:	0°C ~ 70°C (TA)
Memory Type:	Volatile
Memory Size:	144Kb (16K x 9)
Memory Format:	SRAM
Interface:	Parallel

Related products


7016L25J8

IC SRAM 144KBIT 25NS 68PLCC
[IDT, Integrated Device Technology Inc](#)

RFQ


7016L25J

IC SRAM 144KBIT 25NS 68PLCC
[IDT, Integrated Device Technology Inc](#)

RFQ


7016L25PF

IC SRAM 144KBIT 25NS 80TQFP
[IDT, Integrated Device Technology Inc](#)

RFQ


7016L35PF

IC SRAM 144KBIT 35NS 80TQFP
[IDT, Integrated Device Technology Inc](#)

RFQ


7016L20PFI8

IC SRAM 144KBIT 20NS 80TQFP
[IDT, Integrated Device Technology Inc](#)

RFQ


7016S12J

IC SRAM 144KBIT 12NS 68PLCC
[IDT, Integrated Device Technology Inc](#)

RFQ


7016L35J8

IC SRAM 144KBIT 35NS 68PLCC
[IDT, Integrated Device Technology Inc](#)

RFQ


7016L20PFI

IC SRAM 144KBIT 20NS 80TQFP
[IDT, Integrated Device Technology Inc](#)

RFQ


7016L35J

IC SRAM 144KBIT 35NS 68PLCC
[IDT, Integrated Device Technology Inc](#)

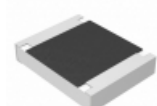
RFQ


7016L35PF8

IC SRAM 144KBIT 35NS 80TQFP
[IDT, Integrated Device Technology Inc](#)

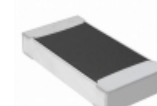
RFQ

Guess You May Looking For


ERJ-14YJ101U

RES SMD 100 OHM 5% 1/2W 1210
[Panasonic Electronic Components](#)

RFQ


RMCF1206JG750K

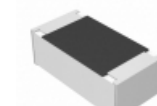
RES SMD 750K OHM 5% 1/4W 1206
[Stackpole Electronics Inc.](#)

RFQ


ESR10EZPJ755

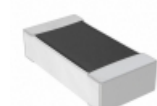
RES SMD 7.5M OHM 5% 0.4W 0805
[Rohm Semiconductor](#)

RFQ


ERA-2AED823X

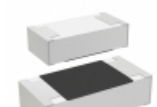
RES SMD 82K OHM 0.5% 1/16W 0402
[Panasonic Electronic Components](#)

RFQ


RMCF0603FT71R5

RES SMD 71.5 OHM 1% 1/10W 0603
[Stackpole Electronics Inc.](#)

RFQ


CR0603-JW-680GLF

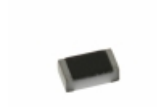
RES SMD 68 OHM 5% 1/10W 0603
[Bourns Inc.](#)

RFQ


CRCW04021R69FNED

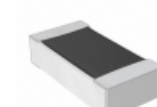
RES SMD 1.69 OHM 1% 1/16W 0402
[Vishay Dale](#)

RFQ


CRCW04022K20JNTE

RES SMD 2.2K OHM 5% 1/16W 0402
[Vishay Dale](#)

RFQ


RNCF0603DTC14K7

RES SMD 14.7KOHM 0.5% 1/10W 0603
[Stackpole Electronics Inc.](#)

RFQ


RG1608Q-10R7-D-T5

RES SMD 10.7 OHM 0.5% 1/10W 0603
[Susumu](#)

RFQ