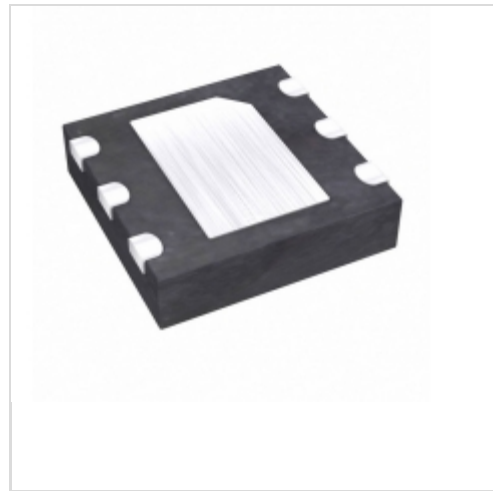


DS28EL25Q+U



Maxim Integrated

IC EEPROM 4KBIT 1WIRE 6TDFN

Lead free / RoHS Compliant

Integrated Circuits (ICs)

[DS28EL25Q+U.pdf](#)

Buy Now

We can supply Maxim Integrated DS28EL25Q+U, use the request quote form to request DS28EL25Q+U price, Maxim Integrated Datasheet PDF and lead time. Zeanoit.com is a professional electronic components distributor. With 3+ Million line items of available electronic components can ship in short lead-time, over 250 thousand part numbers of electronic components in stock for immediately delivery, which may include part number DS28EL25Q+U. The price and lead time for DS28EL25Q+U depending on the quantity required, availability and warehouse location.

Shopping Process

1

Confirm the product

2

submit the order

3

payment

4

wait for delivery

5

receive the goods

Specifications

Voltage - Supply:	1.71 V ~ 1.89 V
Supplier Device Package:	6-TDFN-EP (3x3)
Speed:	-
Series:	-
Packaging:	Cut Tape (CT)
Package / Case:	6-WDFN Exposed Pad
Operating Temperature:	-40°C ~ 85°C (TA)
Memory Type:	Non-Volatile
Memory Size:	4Kb (256 x 16)
Memory Format:	EEPROM
Interface:	1-Wire® Serial

Related products



DS28EL22EVKIT#

EVAL KIT FOR DS28EL22

[Maxim Integrated](#)

RFQ



DS2900-3-002

AC/DC CONVERTER 12V 2900W

[Artesyn Embedded Technologies](#)

RFQ

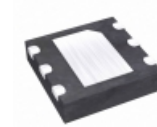


DS28EL35QA-742+2BW

SECURE AUTHENTICATOR TDFN

[Maxim Integrated](#)

RFQ



DS28EL22Q+U

IC EEPROM 2KBIT 1WIRE 6TDFN

[Maxim Integrated](#)

RFQ



DS28EL35QA-742+2TW

SECURE AUTHENTICATOR TDFN

[Maxim Integrated](#)

RFQ



DS2900-3

AC/DC CONVERTER 12V 2900W

[Artesyn Embedded Technologies](#)

RFQ



DS28EL25EVKIT#

EVAL KIT FOR DS28EL25

[Maxim Integrated](#)

RFQ

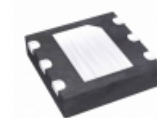


DS2900-3-003

AC/DC CONVERTER 12V 2900W

[Artesyn Embedded Technologies](#)

RFQ

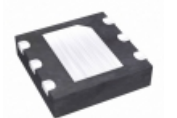


DS28EL25Q+T

IC EEPROM 4KBIT 1WIRE 6TDFN

[Maxim Integrated](#)

RFQ



DS28EL22Q+T

IC EEPROM 2KBIT 1WIRE 6TDFN

[Maxim Integrated](#)

RFQ

Guess You May Looking For

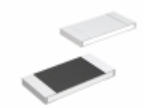


TNPW08052K49BEEA

RES SMD 2.49K OHM 0.1% 1/8W 0805

[Vishay Dale](#)

RFQ



MCR100JZH1100

RES SMD 110 OHM 1% 1W 2512

[Rohm Semiconductor](#)

RFQ



RMCF0402FT120R

RES SMD 120 OHM 1% 1/16W 0402

[Stackpole Electronics Inc.](#)

RFQ



RT0402FRE072KL

RES SMD 2K OHM 1% 1/16W 0402

[Yageo](#)

RFQ

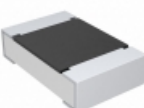


AR0805FR-0776K8L

RES SMD 76.8K OHM 1% 1/8W 0805

[Yageo](#)

RFQ

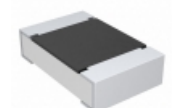


CRCW08056M80FKEB

RES SMD 6.8M OHM 1% 1/8W 0805

[Vishay Dale](#)

RFQ

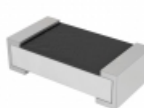


CRCW08054R70FKTA

RES SMD 4.7 OHM 1% 1/8W 0805

[Vishay Dale](#)

RFQ

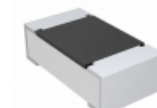


PT0603FR-7W0R75L

RES SMD 0.75 OHM 1% 1/5W 0603

[Yageo](#)

RFQ



CRCW060341K2DKEAP

RES SMD 41.2KOHM 0.5% 1/10W 0603

[Vishay Dale](#)

RFQ



RNCF1206DTC80K6

RES SMD 80.6K OHM 0.5% 1/3W 1206

[Stackpole Electronics Inc.](#)

RFQ