

## AT29BV010A-25TI



### Microchip Technology

IC FLASH 1MBIT 250NS 32TSOP  
Contains lead / RoHS non-compliant  
Integrated Circuits (ICs)

[AT29BV010A-25TI.pdf](#)

**Buy Now**

Images are for reference only.

See Product Specifications for product details.

If you are interested to buy AT29BV010A-25TI, Just Email us.

Sales@zeanoit.com

our sales team will reply you within 24 hours

### Shopping Process

**1**

Confirm the product



**2**

submit the order



**3**

payment



**4**

wait for delivery



**5**

receive the goods

### Specifications

<b>Voltage - Supply:</b>	2.7 V ~ 3.6 V
<b>Supplier Device Package:</b>	32-TSOP
<b>Speed:</b>	250ns
<b>Series:</b>	-
<b>Packaging:</b>	Tray
<b>Package / Case:</b>	32-TFSOP (0.724", 18.40mm Width)
<b>Operating Temperature:</b>	-40°C ~ 85°C (TC)
<b>Memory Type:</b>	Non-Volatile
<b>Memory Size:</b>	1Mb (128K x 8)
<b>Memory Format:</b>	FLASH
<b>Interface:</b>	Parallel

### Related products



#### AT29BV010A-30

in stock  
[ATMEL](#)

RFQ



#### AT29BV010A-30JC

in stock  
[ATMEL](#)

RFQ



#### AT29BV010A-25TC

IC FLASH 1MBIT 250NS 32TSOP  
[Microchip Technology](#)

RFQ



#### AT29BV010A-30JI

in stock  
[ATMEL](#)

RFQ



#### AT29BV010A-20TI

IC FLASH 1MBIT 200NS 32TSOP  
[Microchip Technology](#)

RFQ



#### AT29BV010A-25JC

IC FLASH 1MBIT 250NS 32PLCC  
[Microchip Technology](#)

RFQ



#### AT29BV010A-30TC

in stock  
[ATMEL](#)

RFQ



#### AT29BV010A-30TI

in stock  
[ATMEL](#)

RFQ



#### AT29BV010A-25JI

IC FLASH 1MBIT 250NS 32PLCC  
[Microchip Technology](#)

RFQ

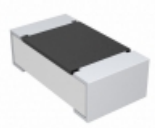


#### AT29BV010A-25

in stock  
[ATMEL](#)

RFQ

### Guess You May Looking For



#### CRCW060315R4FKEA

RES SMD 15.4 OHM 1% 1/10W 0603  
[Vishay Dale](#)

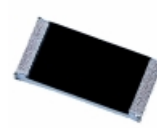
RFQ



#### RC0402FR-07118RL

RES SMD 118 OHM 1% 1/16W 0402  
[Yageo](#)

RFQ



#### RGC1206FTC4K87

RES SMD 4.87K OHM 1% 1/4W 1206  
[Stackpole Electronics Inc.](#)

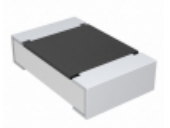
RFQ



#### CRCW04026R34FNED

RES SMD 6.34 OHM 1% 1/16W 0402  
[Vishay Dale](#)

RFQ



#### CRCW08054R99FNNTA

RES SMD 4.99 OHM 1% 1/8W 0805  
[Vishay Dale](#)

RFQ



#### AT0603DRE07523RL

RES SMD 523 OHM 0.5% 1/10W 0603  
[Yageo](#)

RFQ



#### KTR18EZPJ242

RES SMD 2.4K OHM 5% 1/4W 1206  
[Rohm Semiconductor](#)

RFQ



#### ESR18EZPF5103

RES SMD 510K OHM 1% 1/3W 1206  
[Rohm Semiconductor](#)

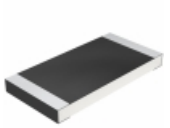
RFQ



#### RC2010FK-0728RL

RES SMD 28 OHM 1% 3/4W 2010  
[Yageo](#)

RFQ



#### CRCW25121R20FNNEG

RES SMD 1.2 OHM 1% 1W 2512  
[Vishay Dale](#)

RFQ