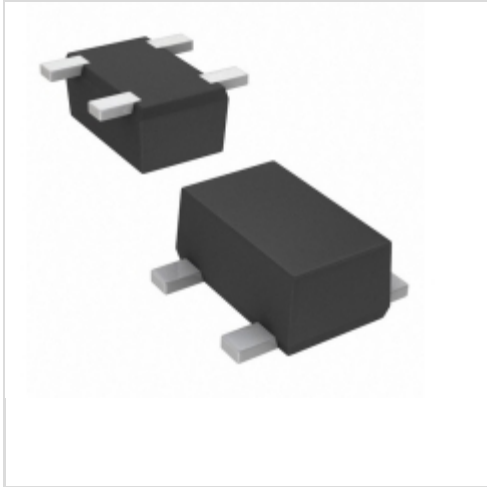


**MA4Z15900L**

**Panasonic**

DIODE ARRAY GP 80V 100MA SMINI4

Lead free / RoHS Compliant

Discrete Semiconductor Products

[MA4Z15900L.pdf](#)
**Buy Now**

We can supply MA4Z15900L, use the request quote form to request MA4Z15900L price and lead time. Zeano is a professional electronic components distributor. With 3+ Million line items of available electronic components can ship in short lead-time, over 250 thousand part numbers of electronic components in stock for immediately delivery, which may include part number MA4Z15900L. The price and lead time for MA4Z15900L depending on the quantity required and warehouse location. Contact us and our sales representative will provide you price. We look forward to work with you.

## Shopping Process

**1**

Confirm the product


**2**

submit the order


**3**

payment


**4**

wait for delivery


**5**

receive the goods

## Specifications

|  |                                       |
|--|---------------------------------------|
| <b>Voltage - Forward (Vf) (Max) @ If:</b>            | 1.2V @ 100mA                          |
| <b>Voltage - DC Reverse (Vr) (Max):</b>              | 80V                                   |
| <b>Supplier Device Package:</b>                      | SMini4-F1                             |
| <b>Speed:</b>  | Small Signal =< 200mA (Io), Any Speed |
| <b>Series:</b>                                       | -                                     |
| <b>Reverse Recovery Time (trr):</b>                  | 3ns                                   |
| <b>Packaging:</b>                                    | Tape & Reel (TR)                      |
| <b>Package / Case:</b>                               | 4-SMD, Flat Leads                     |
| <b>Operating Temperature - Junction:</b>             | 150°C (Max)                           |
| <b>Mounting Type:</b>                                | Surface Mount                         |
| <b>Diode Type:</b>                                   | Standard                              |
| <b>Diode Configuration:</b>                          | 2 Independent                         |
| <b>Current - Reverse Leakage @ Vr:</b>               | 100nA @ 75V                           |
| <b>Current - Average Rectified (Io) (per Diode):</b> | 100mA (DC)                            |

## Related products


**MA4X86200L**  
 DIODE ARRAY GP 35V 100MA MINI4  
[Panasonic Electronic Components](#)

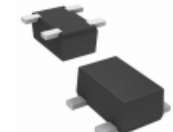
RFQ


**MA4X72600L**  
 DIODE ARRAY SCHOTTKY 30V MINI4  
[Panasonic Electronic Components](#)

RFQ

**Panasonic**
**MA4ZD030**  
[Panasonic](#)

RFQ


**MA4Z71300L**  
 DIODE ARRAY SCHOTTKY 30V SMINI4  
[Panasonic Electronic Components](#)

RFQ


**MA4X74600L**  
 DIODE ARRAY SCHOTTKY 50V MINI4  
[Panasonic Electronic Components](#)

RFQ

**Panasonic**
**MA4Z713**  
[Panasonic](#)

RFQ

**Panasonic**
**MA4ZD03001S0**  
[PANASONIC](#)

RFQ


**MA4X79600L**  
 DIODE ARRAY SCHOTTKY 50V MINI4  
[Panasonic Electronic Components](#)

RFQ

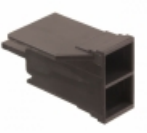
**Panasonic**
**MA4ZD03-TX**  
[PANASONIC](#)

RFQ


**MA4X72400L**  
 DIODE ARRAY SCHOTTKY 30V MINI4  
[Panasonic Electronic Components](#)

RFQ

## Guess You May Looking For


**1969232-2**  
 CONN RCPT HSG 0.25 2POS BLACK  
[TE Connectivity AMP Connectors](#)

RFQ


**880192-1**  
 CONN RCPT HSG 0.11 5POS NATURAL  
[TE Connectivity AMP Connectors](#)

RFQ


**344071-1**  
 CONN QC TAB 15-20AWG 0.250 CRIMP  
[TE Connectivity AMP Connectors](#)

RFQ


**2704-2-00-50-00-00-07-0**  
 TERM TURRET SINGLE L=8.33MM  
[Mill-Max Manufacturing Corp.](#)

RFQ


**3156-3-00-21-00-00-08-0**  
 TERM TURRET PIN L=3.81MM GOLD  
[Mill-Max Manufacturing Corp.](#)

RFQ

**PANDUIT**
**SCSF8-L**  
 CONN BUTT SPLICE 8 AWG CRIMP  
[Panduit Corp](#)

RFQ


**CPF8Z-A2C4-32.768KD6**  
 CRYSTAL 32.7680KHZ 6PF SMD  
[Cardinal Components Inc.](#)

RFQ


**CA-301 6.1440M-C:PBFREE**  
 CRYSTAL 6.1440MHZ 18PF T/H  
[EPSON](#)

RFQ


**TSETTLSANF-20.000000**  
 OSC TCXO 20MHZ 3.3V CLP SW SMD  
[Taitien](#)

RFQ


**SIT1602BC-23-30N-66.660000D**  
 -20 TO 70C, 3225, 50PPM, 3.0V, 6  
[SITIME](#)

RFQ