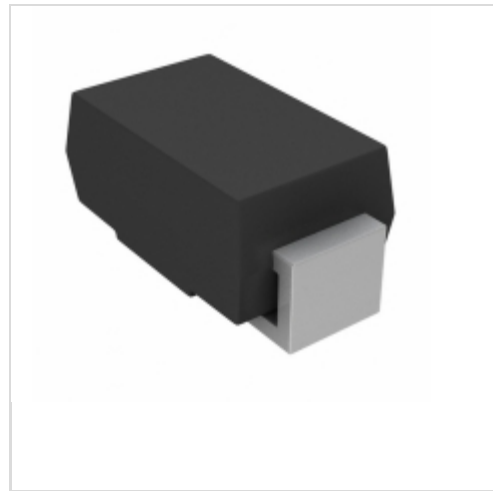


## VSSA210HM3\_A/H



Vishay / Semiconductor - Diodes Division

DIODE SCHOTTKY 100V 2A DO214AC

Lead free / RoHS Compliant

Discrete Semiconductor Products

[VSSA210HM3\\_A/H.pdf](#)

**Buy Now**

**Out Stock**

**0 pcs**

Minimum:1

Multiples:100

Manufacturer lead time 10 weeks

Images are for reference only.

See Product Specifications for product details.

If you are interested to buy VSSA210HM3\_A/H,Just Email us.

Sales@zeanoit.com

our sales team will reply you within 24 hours

### Shopping Process

**1**

Confirm the product

**2**

submit the order

**3**

payment

**4**

wait for delivery

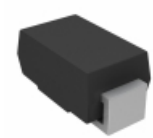
**5**

receive the goods

### Specifications

<b>Voltage - Forward (Vf) (Max) @ If:</b>	700mV @ 2A
<b>Voltage - DC Reverse (Vr) (Max):</b>	100V
<b>Supplier Device Package:</b>	DO-214AC (SMA)
<b>Speed:</b>	Fast Recovery = 200mA (Io)
<b>Series:</b>	Automotive, AEC-Q101, TMBS®
<b>Packaging:</b>	Tape & Reel (TR)
<b>Package / Case:</b>	DO-214AC, SMA
<b>Operating Temperature - Junction:</b>	-40°C ~ 150°C
<b>Mounting Type:</b>	Surface Mount
<b>Diode Type:</b>	Schottky
<b>Current - Reverse Leakage @ Vr:</b>	150µA @ 100V
<b>Current - Average Rectified (Io):</b>	2A (DC)
<b>Capacitance @ Vr, F:</b>	175pF @ 4V, 1MHz

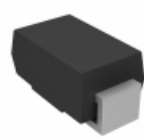
### Related products



**VSSA210-E3/61T**

DIODE SCHOTTKY 100V 1.7A DO214AC  
[Vishay Semiconductor Diodes Division](#)

RFQ



**VSSA310S-E3/5AT**

DIODE SCHOTTKY 100V 1.7A DO214AC  
[Vishay Semiconductor Diodes Division](#)

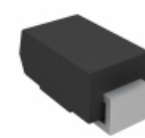
RFQ



**VSSA210S-E3/61T**

[VISHAY](#)

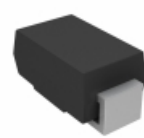
RFQ



**VSSA210HM3\_A/I**

DIODE SCHOTTKY 100V 2A DO214AC  
[Vishay Semiconductor Diodes Division](#)

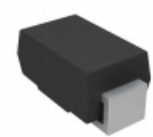
RFQ



**VSSA210-M3/61T**

DIODE SCHOTTKY 100V 1.7A DO214AC  
[Vishay Semiconductor Diodes Division](#)

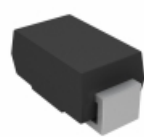
RFQ



**VSSA210-M3/5AT**

DIODE SCHOTTKY 100V 1.7A DO214AC  
[Vishay Semiconductor Diodes Division](#)

RFQ



**VSSA210HM3/61T**

DIODE SCHOTTKY 100V 1.7A DO214AC  
[Vishay Semiconductor Diodes Division](#)

RFQ



**VSSA310S**

[VISHAY](#)

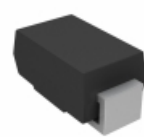
RFQ



**VSSA310-E3/61T**

[VISHAY](#)

RFQ



**VSSA210-E3/5AT**

DIODE SCHOTTKY 100V 1.7A DO214AC  
[Vishay Semiconductor Diodes Division](#)

RFQ

### Guess You May Looking For



**SIT1602BI-23-30E-37.500000E**

-40 TO 85C, 3225, 50PPM, 3.0V, 3  
[SITIME](#)

RFQ



**SIT1602BC-12-18S-18.432000D**

-20 TO 70C, 2520, 25PPM, 1.8V, 1  
[SITIME](#)

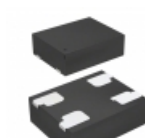
RFQ



**SIT1602BC-11-XXS-26.000000E**

-20 TO 70C, 2520, 20PPM, 2.25V-3  
[SITIME](#)

RFQ



**SIT1602BI-12-25S-20.000000D**

-40 TO 85C, 2520, 25PPM, 2.5V, 2  
[SITIME](#)

RFQ



**SIT1602BI-21-30S-31.250000D**

-40 TO 85C, 3225, 20PPM, 3.0V, 3  
[SITIME](#)

RFQ



**SIT1618AE-13-33S-25.000000E**

OSC MEMS 25.0000MHZ LVCMOS LVTTTL  
[SITIME](#)

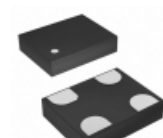
RFQ



**SIT1602BC-81-25N-48.000000Y**

-20 TO 70C, 7050, 20PPM, 2.5V, 4  
[SITIME](#)

RFQ



**SIT1602BC-23-25E-74.176000G**

-20 TO 70C, 3225, 50PPM, 2.5V, 7  
[SITIME](#)

RFQ



**SIT1602BC-72-33N-4.000000G**

-20 TO 70C, 2016, 25PPM, 3.3V, 4  
[SITIME](#)

RFQ



**SIT1602BC-72-XXN-50.000000G**

-20 TO 70C, 2016, 25PPM, 2.25V-3  
[SITIME](#)

RFQ