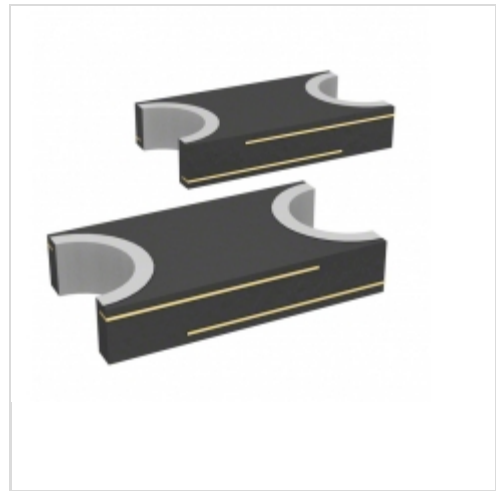


FEMTOSMDC008F-02



Hamlin / Littelfuse

POLYSWITCH RESET FUSE 0.08A SMD

Lead free / RoHS Compliant

Circuit Protection

1.FEMTOSMDC008F-02.pdf

2.FEMTOSMDC008F-02.pdf

Buy Now

Out Stock

0 pcs

Minimum:1

Multiples:100

Manufacturer lead time 10 weeks

part#FEMTOSMDC008F-02 is available, see description of FEMTOSMDC008F-02 as below .

use the request quote form to request FEMTOSMDC008F-02 price and lead time.

Buy Electronic Components at zeanoit.com .we are an independent distributor of electronic components with extensive inventory in stock.

The price and lead time for FEMTOSMDC008F-02 depending on the quantity required, availability and warehouse location.Contact us today and our sales team will send you quotation soon.

Email: sales@zeanoit.com

Shopping Process

1

Confirm the product

2

submit the order

3

payment

4

wait for delivery

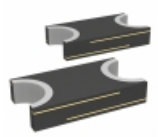
5

receive the goods

Specifications

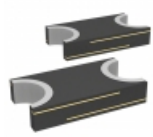
Voltage - Max:	15V
Type:	Polymeric
Time to Trip:	100ms
Thickness (Max):	0.033" (0.85mm)
Size / Dimension:	0.063" L x 0.031" W (1.60mm x 0.80mm)
Series:	PolySwitch®
Resistance - Post Trip (R1) (Max):	-
Resistance - Initial (Ri) (Min):	3.8 Ohm
Resistance - 25°C (Typ):	-
Ratings:	-
Packaging:	Tape & Reel (TR)
Package / Case:	0603 (1608 Metric), Concave
Operating Temperature:	-
Mounting Type:	Surface Mount
Lead Spacing:	-
Height - Seated (Max):	-
Current - Trip (It):	150mA
Current - Max:	40A
Current - Hold (Ih) (Max):	50mA
Approvals:	CSA, UL

Related products



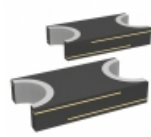
FEMTOSMDC005F-2
POLYSWITCH .05A RESET FUSE SMD
[Littelfuse Inc.](#)

RFQ



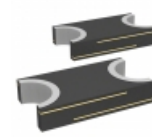
FEMTOSMDC010F-02
POLYSWITCH RESET FUSE 0.10A SMD
[Littelfuse Inc.](#)

RFQ



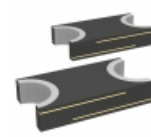
FEMTOSMDC010F/15-2
POLYSWITCH .100A 15V RESET SMD
[Littelfuse Inc.](#)

RFQ



FEMTOSMDC008F-2
POLYSWITCH .08A RESET FUSE SMD
[Littelfuse Inc.](#)

RFQ



FEMTOSMDC010F-2
POLYSWITCH .1A RESET FUSE SMD
[Littelfuse Inc.](#)

RFQ



FEM-7758

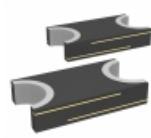
in stock
[AVAGO](#)

RFQ



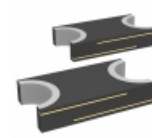
FEMTOSMDC020F-2
POLYSWITCH .200A RESET FUSE SMD
[Littelfuse Inc.](#)

RFQ



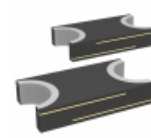
FEMTOSMDC016F-02
POLYSWITCH .16A RESET FUSE SMD
[Littelfuse Inc.](#)

RFQ



FEMTOSMDC012F-2
POLYSWITCH .120A RESET FUSE SMD
[Littelfuse Inc.](#)

RFQ



FEMTOSMDC016F-2
POLYSWITCH .160A RESET FUSE SMD
[Littelfuse Inc.](#)

RFQ

Guess You May Looking For



SMBJ10CA
TVS DIODE 10VWM 17VC SMB
[Littelfuse Inc.](#)

RFQ



SMCJ54CA-E3/57T
TVS DIODE 54VWM 87.1VC SMC
[Vishay Semiconductor Diodes Division](#)

RFQ



ESDA6V1L-TP
TVS DIODE 5.25VWM SOT23
[Micro Commercial Co](#)

RFQ



VTVS12GSMF-M3-08
TVS DIODE 12.4VWM 20.1VC SMF
[Vishay Semiconductor Diodes Division](#)

RFQ



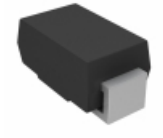
SM6T12CA-M3/52
TVS DIODE 10.2VWM 16.7VC DO-214A
[Vishay Semiconductor Diodes Division](#)

RFQ



P6SMB20A-M3/52
TVS DIODE 17.1VWM 27.7VC DO-214A
[Vishay Semiconductor Diodes Division](#)

RFQ



P4SMA62CAHE3/5A
TVS DIODE 53VWM 85VC SMA
[Vishay Semiconductor Diodes Division](#)

RFQ



SMA6L58A
TVS DIODE 58VWM 93.6VC DO221AC
[Littelfuse Inc.](#)

RFQ



P6SMB56AHE3/52
TVS DIODE 47.8VWM 77VC SMB
[Vishay Semiconductor Diodes Division](#)

RFQ



TA6F8.2AHM3_A/I
TVS DIODE 7.02VWM 12.1VC DO221A
[Vishay Semiconductor Diodes Division](#)

RFQ

