

## VN920SP13TR



[STMicroelectronics](#)

IC DRIVER SINGLE 30A POWERSO-10

Lead free / RoHS Compliant

Integrated Circuits (ICs)

[VN920SP13TR.pdf](#)

[Buy Now](#)

**In Stock**

**600 pcs**

Minimum:1

Multiples:100

Manufacturer lead time 10 weeks

We can supply STMicroelectronics VN920SP13TR, use the request quote form to request VN920SP13TR price, STMicroelectronics Datasheet PDF and lead time. Zeanoit.com is a professional electronic components distributor. With 3+ Million line items of available electronic components can ship in short lead-time, over 250 thousand part numbers of electronic components in stock for immediately delivery, which may include part number VN920SP13TR. The price and lead time for VN920SP13TR depending on the quantity required, availability and warehouse location.

### Shopping Process

**1**

Confirm the product

**2**

submit the order

**3**

payment

**4**

wait for delivery

**5**

receive the goods

### Specifications

<b>Voltage - Supply (Vcc/Vdd):</b>	Not Required
<b>Voltage - Load:</b>	5.5 V ~ 36 V
<b>Switch Type:</b>	General Purpose
<b>Supplier Device Package:</b>	10-PowerSO
<b>Series:</b>	VIpower™
<b>Rds On (Typ):</b>	15 mOhm (Max)
<b>Ratio - Input:Output:</b>	1:1
<b>Packaging:</b>	Tape & Reel (TR)
<b>Package / Case:</b>	PowerSO-10 Exposed Bottom Pad
<b>Output Type:</b>	N-Channel
<b>Output Configuration:</b>	High Side
<b>Operating Temperature:</b>	-40°C ~ 150°C (TJ)
<b>Number of Outputs:</b>	1
<b>Interface:</b>	On/Off
<b>Input Type:</b>	Non-Inverting
<b>Features:</b>	Auto Restart
<b>Fault Protection:</b>	Current Limiting (Fixed), Over Temperature, Over Voltage
<b>Current - Output (Max):</b>	30A

### Related products



**VN920SP**  
IC SSR HIGHSIDE 1CH POWERSO10  
[STMicroelectronics](#)

RFQ



**VN920PEP-E**  
IC DRIVER HIGH SIDE POWERSO24  
[STMicroelectronics](#)

RFQ



**VN920SO**  
IC DRIVER HIGH SIDE 16-SOIC  
[STMicroelectronics](#)

RFQ



**VN920SO-E**  
IC DRIVER HIGH SIDE 16-SOIC  
[STMicroelectronics](#)

RFQ



**VN920PEPTR-E**  
IC DRIVER HIGH SIDE POWERSO24  
[STMicroelectronics](#)

RFQ



**VN920SP-E**  
IC DRIVER HIGH SIDE POWERSO10  
[STMicroelectronics](#)

RFQ



**VN920SO13TR**  
IC SSR HIGHSIDE 1CH 16-SOIC  
[STMicroelectronics](#)

RFQ



**VN920SOTR-E**  
IC DRIVER HIGH SIDE 16-SOIC  
[STMicroelectronics](#)

RFQ



**VN920PEP**  
in stock  
[ST](#)

RFQ



**VN920SPTR-E**  
IC DRIVER HIGH SIDE POWERSO10  
[STMicroelectronics](#)

RFQ

### Guess You May Looking For



**RG3216V-1741-W-T1**  
RES SMD 1.74KOHM 0.05% 1/4W 1206  
[Susumu](#)

RFQ



**RCP2512B220RGS2**  
RES SMD 220 OHM 2% 22W 2512  
[Vishay Dale](#)

RFQ



**D55342K07B690BRT5**  
RES SMD 690K OHM 0.1% 1/4W 1206  
[Vishay Dale](#)

RFQ



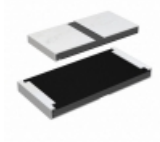
**M55342H03B390JRT5**  
RES SMD 390 OHM 5% 1/5W 1005  
[Vishay Dale](#)

RFQ



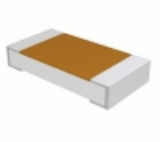
**M55342E04B7E23RT5**  
RES SMD 7.23K OHM 1% 0.15W 1505  
[Vishay Dale](#)

RFQ



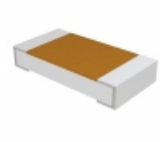
**RCP2512W1K30GS6**  
RES SMD 1.3K OHM 2% 22W 2512  
[Vishay Dale](#)

RFQ



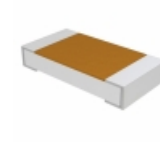
**D55342H07B1E10RWS**  
RES SMD 1.1K OHM 1% 1/4W 1206  
[Vishay Dale](#)

RFQ



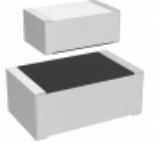
**D55342H07B20D0RWS**  
RES SMD 20 OHM 1% 1/4W 1206  
[Vishay Dale](#)

RFQ



**D55342K07B34B0RWS**  
RES SMD 34K OHM 0.1% 1/4W 1206  
[Vishay Dale](#)

RFQ



**M55342K06B64B9RWS**  
RES SMD 64.9KOHM 0.1% 0.15W 0805  
[Vishay Dale](#)

RFQ

