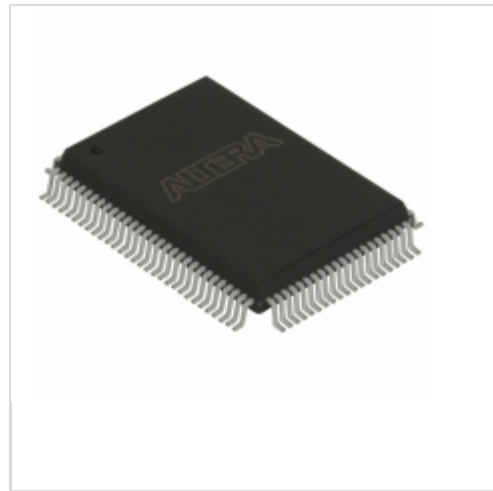


## EPC8QI100N



[Altera \(Intel® Programmable Solutions Group\)](#)

IC CONFIG DEVICE 8MBIT 100QFP

Lead free / RoHS Compliant

Integrated Circuits (ICs)

[1.EPC8QI100N.pdf](#)

[2.EPC8QI100N.pdf](#)

[3.EPC8QI100N.pdf](#)

**Buy Now**

**Out Stock**

**0 pcs**

Minimum:1

Multiples:100

Manufacturer lead time 10 weeks

Images are for reference only.

See Product Specifications for product details.

If you are interested to buy EPC8QI100N,Just Email us.

Sales@zeanoit.com

our sales team will reply you within 24 hours

### Shopping Process

**1**

Confirm the product

**2**

submit the order

**3**

payment

**4**

wait for delivery

**5**

receive the goods

### Specifications

<b>Voltage - Supply:</b>	3 V ~ 3.6 V
<b>Supplier Device Package:</b>	100-PQFP (14x20)
<b>Series:</b>	EPC
<b>Programmable Type:</b>	In System Programmable
<b>Packaging:</b>	Tray
<b>Package / Case:</b>	100-BQFP
<b>Operating Temperature:</b>	-40°C ~ 85°C
<b>Memory Size:</b>	8Mb

### Related products



**EPC8QC100**

IC CONFIG DEVICE 8MBIT 100QFP

[Altera](#)

RFQ



**EPC8xxx**

2. Enhanced Configuration Devices (EPC4, EPC8 & EPC16) Data Sheet

[ALTERA](#)

RFQ



**EPC9002**

BOARD DEV FOR EPC2001 100V GAN

[EPC](#)

RFQ



**EPC8010**

TRANS GAN 100V 2.7A BUMPED DIE

[EPC](#)

RFQ



**EPC8QC100N**

IC CONFIG DEVICE 8MBIT 100QFP

[Altera](#)

RFQ



**EPC9001C**

BOARD DEV EPC2015C 40V EGAN

[EPC](#)

RFQ



**EPC9002C**

BOARD DEV FOR EPC2001C 100V

[EPC](#)

RFQ



**EPC8QI100**

IC CONFIG DEVICE 8MBIT 100QFP

[Altera](#)

RFQ



**EPC9001**

BOARD DEV FOR EPC2015 40V GAN

[EPC](#)

RFQ



**EPC8010ENGR**

TRANS GAN 100V 2.7A BUMPED DIE

[EPC](#)

RFQ

### Guess You May Looking For



**RG2012P-4223-B-T5**

RES SMD 422K OHM 0.1% 1/8W 0805

[Susumu](#)

RFQ



**RT0603CRD0716R9L**

RES SMD 16.9OHM 0.25% 1/10W 0603

[Yageo](#)

RFQ



**RG2012P-6813-B-T5**

RES SMD 681K OHM 0.1% 1/8W 0805

[Susumu](#)

RFQ



**RT0603CRD0742K2L**

RES SMD 42.2K OHM 1/10W 0603

[Yageo](#)

RFQ



**RT0603CRD0769R8L**

RES SMD 69.8OHM 0.25% 1/10W 0603

[Yageo](#)

RFQ



**CRGH2010F17R4**

RES SMD 17.4 OHM 1% 1W 2010

[TE Connectivity Passive Product](#)

RFQ

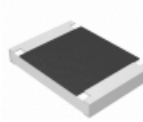


**RG1608P-1961-B-T5**

RES SMD 1.96KOHM 0.1% 1/10W 0603

[Susumu](#)

RFQ

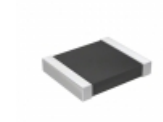


**ERJ-S12J564U**

RES SMD 560K OHM 5% 3/4W 1812

[Panasonic Electronic Components](#)

RFQ



**RT1210FRD0718K2L**

RES SMD 18.2K OHM 1% 1/4W 1210

[Yageo](#)

RFQ



**CRGH2010F90K9**

RES SMD 90.9K OHM 1% 1W 2010

[TE Connectivity Passive Product](#)

RFQ