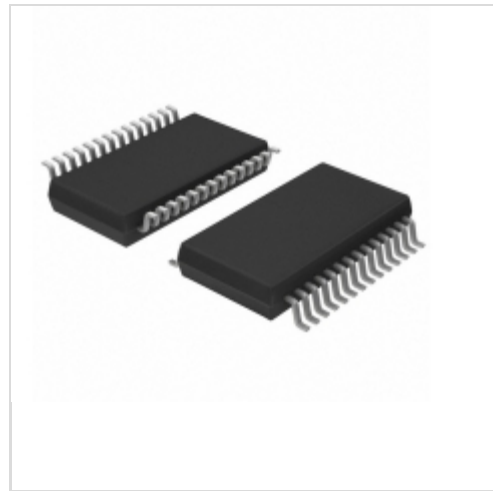


MAX9526AEI+

Maxim Integrated

IC VID DECODER NTSC/PAL 28-QSOP

Lead free / RoHS Compliant

Integrated Circuits (ICs)

[1.MAX9526AEI+.pdf](#)
[2.MAX9526AEI+.pdf](#)
Buy Now

We can supply MAX9526AEI+, use the request quote form to request MAX9526AEI+ price and lead time. Zeano is a professional electronic components distributor. With 3+ Million line items of available electronic components can ship in short lead-time, over 250 thousand part numbers of electronic components in stock for immediately delivery, which may include part number MAX9526AEI+. The price and lead time for MAX9526AEI+ depending on the quantity required and warehouse location. Contact us and our sales representative will provide you price. We look forward to work with you.

Shopping Process

1
Confirm the product
2
submit the order
3
payment
4
wait for delivery
5
receive the goods

Specifications

Voltage - Supply, Digital:	1.8V
Voltage - Supply, Analog:	1.8V
Type:	Video Decoder
Supplier Device Package:	28-QSOP
Series:	-
Packaging:	Tube
Package / Case:	28-SSOP (0.154", 3.90mm Width)
Mounting Type:	Surface Mount
Applications:	Automotive Systems, Players, TV

Related products


MAX9526ATJ

 in stock
[MAXIM](#)

RFQ


MAX9526AEI+T

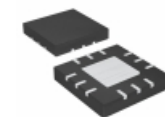
 IC VID DECODER NTSC/PAL 28-QSOP
[Maxim Integrated](#)

RFQ


MAX9526AEV+

 in stock
[MAXIM](#)

RFQ


MAX9524ATC+

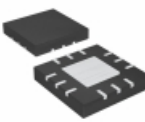
 IC STD-DEF VID FILT AMP 12TQFN
[Maxim Integrated](#)

RFQ


MAX9524EVKIT+

 KIT EVAL FOR MAX9524
[Maxim Integrated](#)

RFQ


MAX9524ATC+T

 IC STD-DEF VID FILT AMP 12TQFN
[Maxim Integrated](#)

RFQ


MAX9526AEI/V+T

 IC VID DECODER NTSC/PAL 28QSOP
[Maxim Integrated](#)

RFQ


MAX9526

 in stock
[MAXIM](#)

RFQ


MAX9526AEI/V+

 IC VID DECODER NTSC/PAL 28QSOP
[Maxim Integrated](#)

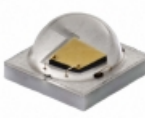
RFQ


MAX9526AEI

 in stock
[MAXIM](#)

RFQ

Guess You May Looking For


XPEBWT-H1-R250-009F7

 LED XLAMP WARM WHITE 3250K 2SMD
[Cree Inc.](#)

RFQ


XTEHVW-Q2-0000-00000H9F9

 LED XLAMP WARM WHITE 2700K 2SMD
[Cree Inc.](#)

RFQ


XTEHVW-Q0-0000-00000H9E9

 LED XLAMP WHITE 80CRI 2SMD
[Cree Inc.](#)

RFQ


XPEHEW-01-R250-00EF5

 LED XLAMP NEUTRAL WHT 4250K 2SMD
[Cree Inc.](#)

RFQ


XPEHEW-L1-R250-00AF8

 LED XLAMP WARM WHITE 2850K 2SMD
[Cree Inc.](#)

RFQ


XPCWHT-L1-0000-00807

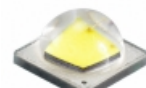
 LED XLAMP COOL WHITE 2SMD
[Cree Inc.](#)

RFQ


XMLAWT-02-0000-000LT40F4

 LED XLAMP NEUTRAL WHT 4750K 2SMD
[Cree Inc.](#)

RFQ


XMLBWT-02-0000-000PS30Z8

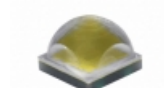
 LED XLAMP WARM WHITE 2700K 2SMD
[Cree Inc.](#)

RFQ


GW P7STA1.PM-QTRP-30S3-1

 LED DURIS P10 WARM WHT 3000K SMD
[OSRAM Opto Semiconductors Inc.](#)

RFQ


XHP35A-00-0000-0D0BD450E

 LED XLAMP XHP35 COOL WHT 5000K
[Cree Inc.](#)

RFQ