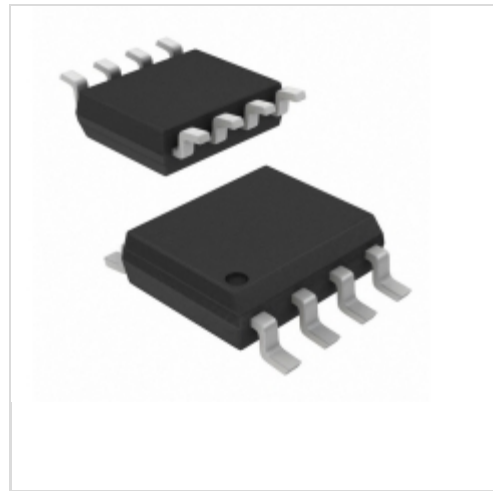


## FAN7080CM\_F085



[Fairchild/ON Semiconductor](#)

IC GATE DRIVER HALF BRIDGE 8SOIC

Lead free / RoHS Compliant

Integrated Circuits (ICs)

[FAN7080CM\\_F085.pdf](#)

[Buy Now](#)

We can supply FAN7080CM\_F085, use the request quote form to request FAN7080CM\_F085 price and lead time. Zeano is a professional electronic components distributor. With 3+ Million line items of available electronic components can ship in short lead-time, over 250 thousand part numbers of electronic components in stock for immediately delivery, which may include part number FAN7080CM\_F085. The price and lead time for FAN7080CM\_F085 depending on the quantity required and warehouse location. Contact us and our sales representative will provide you price. We look forward to work with you.

### Shopping Process

1

Confirm the product

2

submit the order

3

payment

4

wait for delivery

5

receive the goods

### Specifications

<b>Voltage - Supply:</b>	5.5 V ~ 20 V
<b>Supplier Device Package:</b>	8-SOIC
<b>Series:</b>	Automotive, AEC-Q100
<b>Rise / Fall Time (Typ):</b>	40ns, 25ns
<b>Packaging:</b>	Tube
<b>Package / Case:</b>	8-SOIC (0.154", 3.90mm Width)
<b>Operating Temperature:</b>	-40°C ~ 150°C (TJ)
<b>Number of Drivers:</b>	2
<b>Mounting Type:</b>	Surface Mount
<b>Logic Voltage - VIL, VIH:</b>	0.8V, 2.7V
<b>Input Type:</b>	Non-Inverting
<b>High Side Voltage - Max (Bootstrap):</b>	600V
<b>Gate Type:</b>	IGBT, N-Channel MOSFET
<b>Driven Configuration:</b>	Half-Bridge
<b>Current - Peak Output (Source, Sink):</b>	300mA, 600mA
<b>Channel Type:</b>	Synchronous

### Related products



**FAN7071**  
[SIP10](#)

[RFQ](#)



**FAN7080CMX\_F085**  
IC GATE DRIVER HALF BRIDGE 8SOIC  
[Fairchild/ON Semiconductor](#)

[RFQ](#)



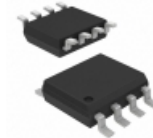
**FAN7080MX\_GF085**  
IC GATE DRIVER HALF BRIDGE 8SOIC  
[Fairchild/ON Semiconductor](#)

[RFQ](#)



**FAN7040MX**  
IC AMP AUDIO PWR 3.5W AB 20SOIC  
[Fairchild/ON Semiconductor](#)

[RFQ](#)



**FAN7081CMX\_F085**  
IC GATE DRIVER HIGH SIDE 8SOIC  
[Fairchild/ON Semiconductor](#)

[RFQ](#)



**FAN7040M**  
IC AMP AUDIO PWR 3.5W AB 20SOIC  
[Fairchild/ON Semiconductor](#)

[RFQ](#)



**FAN7081CM\_F085**  
IC GATE DRIVER HI SIDE 8-SOIC  
[Fairchild/ON Semiconductor](#)

[RFQ](#)



**FAN7080M\_GF085**  
IC GATE DRIVER HALF BRIDGE 8SOIC  
[Fairchild/ON Semiconductor](#)

[RFQ](#)



**FAN7081MX**  
[FAIRCHILD](#)

[RFQ](#)



**FAN7071TS**  
IC LANDING CORRECTION 10SIPH  
[Fairchild/ON Semiconductor](#)

[RFQ](#)

### Guess You May Looking For



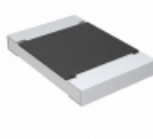
**RT1206CRB075K36L**  
RES SMD 5.36KOHM 0.25% 1/4W 1206  
[Yageo](#)

[RFQ](#)



**RG1608P-513-W-T5**  
RES SMD 51K OHM 0.05% 1/10W 0603  
[Susumu](#)

[RFQ](#)



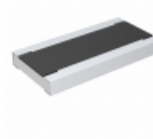
**CRCW12187K50FKEK**  
RES SMD 7.5K OHM 1% 1W 1218  
[Vishay Dale](#)

[RFQ](#)



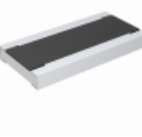
**RNCF1210BTC1K10**  
RES SMD 1.1K OHM 0.1% 1/3W 1210  
[Stackpole Electronics Inc.](#)

[RFQ](#)



**RCWE102026L1FKEA**  
RES SMD 0.0261 OHM 2W 2010 WIDE  
[Vishay Dale](#)

[RFQ](#)



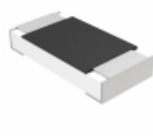
**RCWE1020R102FKEA**  
RES SMD 0.102 OHM 2W 2010 WIDE  
[Vishay Dale](#)

[RFQ](#)



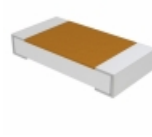
**RG1608P-1433-W-T1**  
RES SMD 143KOHM 0.05% 1/10W 0603  
[Susumu](#)

[RFQ](#)



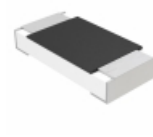
**MCA12060D1580BP500**  
RES SMD 158 OHM 0.1% 1/4W 1206  
[Vishay Beyschlag](#)

[RFQ](#)



**TNPW120684K5BEEA**  
RES SMD 84.5K OHM 0.1% 1/4W 1206  
[Vishay Dale](#)

[RFQ](#)



**MCA12060D2641BP500**  
RES SMD 2.64K OHM 0.1% 1/4W 1206  
[Vishay Beyschlag](#)

[RFQ](#)