

## LM5068MM-2



N/A  
 IC CTRLR HOTSWAP -48V 8VSSOP  
 Contains lead / RoHS non-compliant  
 Integrated Circuits (ICs)

**Buy Now**

We can supply LM5068MM-2, use the request quote form to request LM5068MM-2 pirce, Datasheet PDF and lead time. Zeanoit.com is a professional electronic components distributor. With 3+ Million line items of available electronic components can ship in short lead-time, over 250 thousand part numbers of electronic components in stock for immediately delivery, which may include part number LM5068MM-2. The price and lead time for LM5068MM-2 depending on the quantity required, availability and warehouse location.

### Shopping Process

**1**

Confirm the product

**2**

submit the order

**3**

payment

**4**

wait for delivery

**5**

receive the goods

### Specifications

<b>Voltage - Supply:</b>	-90 V ~ -10 V
<b>Type:</b>	Hot Swap Controller
<b>Supplier Device Package:</b>	8-VSSOP
<b>Series:</b>	-
<b>Programmable Features:</b>	Circuit Breaker, Current Limit, Fault Timeout, OVP, UVLO
<b>Packaging:</b>	Tape & Reel (TR)
<b>Package / Case:</b>	8-TSSOP, 8-MSOP (0.118", 3.00mm Width)
<b>Operating Temperature:</b>	-40°C ~ 105°C
<b>Number of Channels:</b>	1
<b>Mounting Type:</b>	Surface Mount
<b>Internal Switch(s):</b>	No
<b>Features:</b>	Auto Retry, Turn On Voltage
<b>Feature Pins:</b>	PWRGD, OV, TIMER, UV
<b>Current - Supply:</b>	820µA
<b>Current - Output (Max):</b>	-
<b>Applications:</b>	-48V

### Related products



**LM5068MM-1**  
 IC CTRLR HOTSWAP -48V 8VSSOP  
[N/A](#)

RFQ



**LM5068MM-1/NOPB**  
 IC CTRLR HOTSWAP -48V 8VSSOP  
[N/A](#)

RFQ



**LM5068MM-3/NOPB**  
 IC CTRLR HOTSWAP -48V 8VSSOP  
[N/A](#)

RFQ



**LM5068MM-4**  
 IC CTRLR HOTSWAP -48V 8VSSOP  
[N/A](#)

RFQ



**LM5068MM-2/NOPB**  
 IC CTRLR HOTSWAP -48V 8VSSOP  
[N/A](#)

RFQ



**LM5067MWX-1/NOPB**  
 IC CTRLR NEG HOTSWAP LATCH 14SOIC  
[N/A](#)

RFQ



**LM5067MW-1/NOPB**  
 IC CTRLR NEG HOTSWAP LATCH 14SOIC  
[N/A](#)

RFQ



**LM5068MM-3**  
 IC CTRLR HOTSWAP -48V 8VSSOP  
[N/A](#)

RFQ



**LM5068MM-4/NOPB**  
 IC CTRLR HOTSWAP -48V 8VSSOP  
[N/A](#)

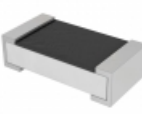
RFQ



**LM5068EVAL**  
 EVALUATION BOARD FOR LM5068  
[N/A](#)

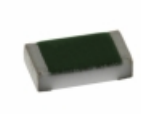
RFQ

### Guess You May Looking For



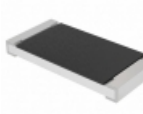
**PE0603DRF7W0R01L**  
 RES SMD 0.01 OHM 0.5% 1/5W 0603  
[Yageo](#)

RFQ



**TNPW0603340RBETA**  
 RES SMD 340 OHM 0.1% 1/10W 0603  
[Vishay Dale](#)

RFQ



**CRCW251214K0FKEGHP**  
 RES SMD 14K OHM 1% 1.5W 2512  
[Vishay Dale](#)

RFQ



**RMCP2512FT3R00**  
 RES SMD 3 OHM 1% 2W 2512  
[Stackpole Electronics Inc.](#)

RFQ



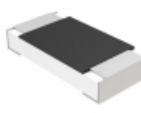
**RT0603WRD07422RL**  
 RES SMD 422 OHM 0.05% 1/10W 0603  
[Yageo](#)

RFQ



**TNPW0805825RBETA**  
 RES SMD 825 OHM 0.1% 1/8W 0805  
[Vishay Dale](#)

RFQ



**MCA12060D1270BP100**  
 RES SMD 127 OHM 0.1% 1/4W 1206  
[Vishay Beyschlag](#)

RFQ



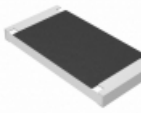
**RG1005P-431-W-T5**  
 RES SMD 430 OHM 0.05% 1/16W 0402  
[Susumu](#)

RFQ



**HRG3216P-8452-D-T5**  
 RES SMD 84.5K OHM 0.5% 1W 1206  
[Susumu](#)

RFQ



**ERJ-A1AJ241U**  
 RES SMD 240 OHM 1.33W 2512 WIDE  
[Panasonic Electronic Components](#)

RFQ