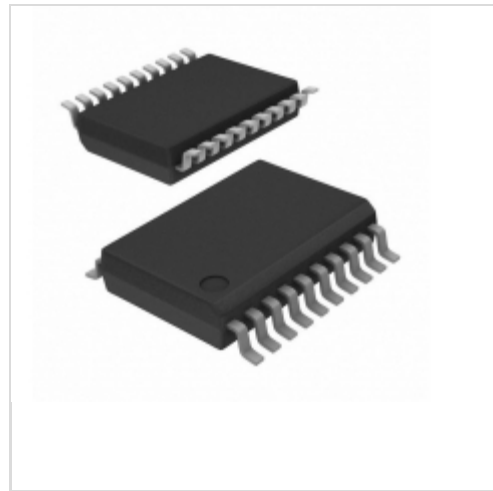


MAX1647EAP



Maxim Integrated

IC BATT CHARGER CHEM-IND 20-SSOP
Contains lead / RoHS non-compliant
Integrated Circuits (ICs)

- 1.MAX1647EAP.pdf
- 2.MAX1647EAP.pdf

Buy Now

Images are for reference only.

See Product Specifications for product details.

If you are interested to buy MAX1647EAP,Just Email us.

Sales@zeanoit.com

our sales team will reply you within 24 hours

Shopping Process



Confirm the product



submit the order



payment



wait for delivery



receive the goods

Specifications

Voltage - Supply (Max):	28V
Supplier Device Package:	20-SSOP
Series:	-
Programmable Features:	-
Packaging:	Tube
Package / Case:	20-SSOP (0.209", 5.30mm Width)
Operating Temperature:	-40°C ~ 85°C (TA)
Number of Cells:	-
Interface:	I ² C
Fault Protection:	-
Current - Charging:	-
Charge Current - Max:	4A, 2A, 1A
Battery Pack Voltage:	18V
Battery Chemistry:	Multi-Chemistry

Related products



MAX1647EAP
in stock
MAXIM

RFQ



MAX1648
in stock
MAXIM

RFQ



MAX1645BEEI-T
MAXIM

RFQ



MAX1645EEI
in stock
MAXIM

RFQ



MAX1649
in stock
MAXIM

RFQ



MAX1647-MAX1648
in stock
MAXIM

RFQ



MAX1647EAP+
MAXIM

RFQ



MAX1647EAP+T
IC BATT CHARGER CHEM-IND 20SSOP
Maxim Integrated

RFQ



MAX1647
in stock
MAXIM

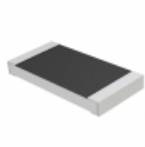
RFQ



MAX1648ESE
in stock
MAXIM

RFQ

Guess You May Looking For



RMCP2010FT68K0
RES SMD 68K OHM 1% 1W 2010
Stackpole Electronics Inc.

RFQ



AT0603CRD0715K4L
RES SMD 15.4K OHM 1/10W 0603
Yageo

RFQ



AT0603CRD07274RL
RES SMD 274 OHM 0.25% 1/10W 0603
Yageo

RFQ



AT0603CRD072K26L
RES SMD 2.26K OHM 1/10W 0603
Yageo

RFQ



RNCF1206BTE61R9
RES SMD 61.9 OHM 0.1% 1/3W 1206
Stackpole Electronics Inc.

RFQ



RNCF0805BKE5R23
RES SMD 5.23 OHM 0.1% 1/8W 0805
Stackpole Electronics Inc.

RFQ



RNCF0805BKE28R7
RES SMD 28.7 OHM 0.1% 1/8W 0805
Stackpole Electronics Inc.

RFQ



RNCF0805BKE422R
RES SMD 422 OHM 0.1% 1/8W 0805
Stackpole Electronics Inc.

RFQ



AT0805CRD0769K8L
RES SMD 69.8KOHM 0.25% 1/8W 0805
Yageo

RFQ



AT0805CRD07909KL
RES SMD 909K OHM 0.25% 1/8W 0805
Yageo

RFQ