

BD6962FVM-GTR



LAPIS Semiconductor

IC MOTOR DRIVER PWM 8-MSOP

Lead free / RoHS Compliant

Integrated Circuits (ICs)

[BD6962FVM-GTR.pdf](#)

Buy Now

We can supply LAPIS Semiconductor BD6962FVM-GTR, use the request quote form to request BD6962FVM-GTR price, LAPIS Semiconductor Datasheet PDF and lead time. Zeanoit.com is a professional electronic components distributor. With 3+ Million line items of available electronic components can ship in short lead-time, over 250 thousand part numbers of electronic components in stock for immediately delivery, which may include part number BD6962FVM-GTR. The price and lead time for BD6962FVM-GTR depending on the quantity required, availability and warehouse location.

Out Stock

0 pcs

Minimum:1

Multiples:100

Manufacturer lead time 10 weeks

PRICE

| | |
|-----------|---------|
| 3000 pcs | \$0.56 |
| 6000 pcs | \$0.532 |
| 15000 pcs | \$0.512 |

Shopping Process

1

Confirm the product

2

submit the order

3

payment

4

wait for delivery

5

receive the goods

Specifications

| | |
|---------------------------------|--|
| Voltage - Supply: | 3.3 V ~ 14 V |
| Voltage - Load: | 3.3 V ~ 14 V |
| Technology: | Power MOSFET |
| Supplier Device Package: | 8-MSOP |
| Step Resolution: | - |
| Series: | - |
| Packaging: | Tape & Reel (TR) |
| Package / Case: | 8-VSSOP, 8-MSOP (0.110", 2.80mm Width) |
| Output Configuration: | Half Bridge (2) |
| Operating Temperature: | -40°C ~ 150°C (TJ) |
| Mounting Type: | Surface Mount |
| Motor Type - Stepper: | - |
| Motor Type - AC, DC: | Brushless DC (BLDC), Brushed DC |
| Interface: | PWM |
| Function: | Driver - Fully Integrated, Control and Power Stage |
| Current - Output: | 800mA |
| Applications: | Fan Motor Driver |

Related products



BD6937MUV-ME2

in stock

[ROHM](#)

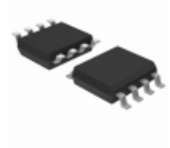
RFQ



BD6963FUJ-E2

[ROHM](#)

RFQ



BD6964F-GE2

IC PWM FAN MOTOR DVR SOP8

[Rohm Semiconductor](#)

RFQ



BD6963AFUJ-E2

[BOHM](#)

RFQ



BD6941FM-E2

IC MOTOR DRIVER PAR 36-HSOP

[Rohm Semiconductor](#)

RFQ



BD6962FVM-TR

IC MOTOR DRIVER PWM 8-MSOP

[Rohm Semiconductor](#)

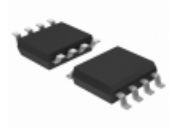
RFQ



BD6962FVM

[ROHM](#)

RFQ



BD6961F-E2

IC MOTOR DRIVER PWM 8-SOP

[Rohm Semiconductor](#)

RFQ



BD6964F-E2

[ROHM](#)

RFQ



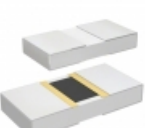
BD6923FV-E2

IC MOTOR DVR 3PH 24-SSOP

[Rohm Semiconductor](#)

RFQ

Guess You May Looking For

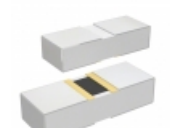


PHP00805H7500BBT1

RES SMD 750 OHM 0.1% 5/8W 0805

[Vishay Thin Film](#)

RFQ

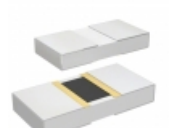


PHP00603E2491BST1

RES SMD 2.49K OHM 0.1% 3/8W 0603

[Vishay Thin Film](#)

RFQ

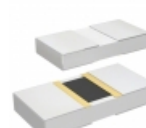


PHP00805E8253BBT1

RES SMD 825K OHM 0.1% 5/8W 0805

[Vishay Thin Film](#)

RFQ

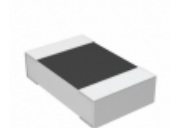


PHP00805E8350BST1

RES SMD 835 OHM 0.1% 5/8W 0805

[Vishay Thin Film](#)

RFQ

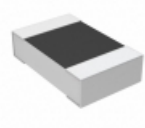


RP73D2A9K09BTG

RES SMD 9.09K OHM 0.1% 1/8W 0805

[TE Connectivity Passive Product](#)

RFQ

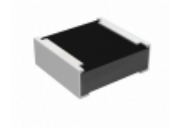


RP73D2A768KBTG

RES SMD 768K OHM 0.1% 1/8W 0805

[TE Connectivity Passive Product](#)

RFQ



RCP0505B11R0JTP

RES SMD 11 OHM 5% 5W 0505

[Vishay Dale](#)

RFQ



RG1608V-4120-B-T5

RES SMD 412 OHM 0.1% 1/10W 0603

[Susumu](#)

RFQ

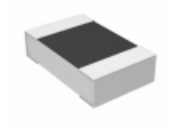


WSLP3921L5000FEA

RES SMD 0.0005 OHM 1% 9W 3921

[Vishay Dale](#)

RFQ



RN73C2A158KBTG

RES SMD 158K OHM 0.1% 1/10W 0805

[TE Connectivity Passive Product](#)

RFQ

