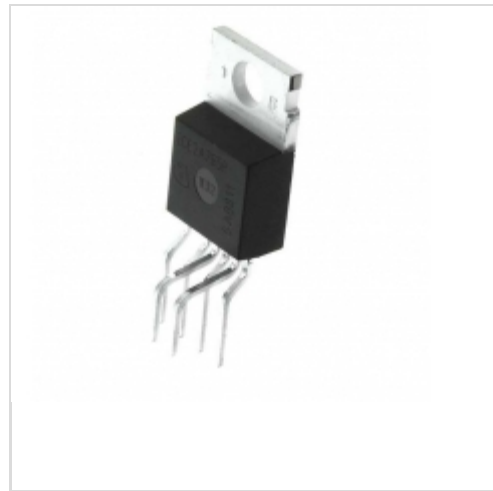


ICE3B3565I



[International Rectifier \(Infineon Technologies\)](#)

IC OFFLINE CTRLR SMPS OTP TO220

Lead free / RoHS Compliant

Integrated Circuits (ICs)

[ICE3B3565I.pdf](#)

Buy Now

We can supply ICE3B3565I, use the request quote form to request ICE3B3565I price and lead time. Zeano is a professional electronic components distributor. With 3+ Million line items of available electronic components can ship in short lead-time, over 250 thousand part numbers of electronic components in stock for immediately delivery, which may include part number ICE3B3565I. The price and lead time for ICE3B3565I depending on the quantity required and warehouse location. Contact us and our sales representative will provide you price. We look forward to work with you.

Shopping Process

1

Confirm the product

2

submit the order

3

payment

4

wait for delivery

5

receive the goods

Specifications

Voltage - Supply (Vcc/Vdd):	8.5 V ~ 21 V
Voltage - Start Up:	15V
Voltage - Breakdown:	650V
Topology:	Flyback
Supplier Device Package:	PG-TO220-6
Series:	CoolMOS™, CoolSET™F3
Power (Watts):	170W
Packaging:	Tube
Package / Case:	TO-220-6 Formed Leads
Output Isolation:	Isolated
Operating Temperature:	-25°C ~ 130°C (TJ)
Mounting Type:	Through Hole
Internal Switch(s):	Yes
Frequency - Switching:	67kHz
Fault Protection:	Current Limiting, Open Loop, Over Load, Over Temperature, Over Voltage
Duty Cycle:	72%
Control Features:	Soft Start

Related products



ICE3B3065PBKSA1
IC OFFLINE CTRLR SMPS OTP TO220
[Infineon Technologies](#)

RFQ



ICE3B3565PBKSA1
IC OFFLINE CTRLR SMPS OTP TO220
[Infineon Technologies](#)

RFQ



ICE3B2565FKLA1
IC OFFLINE CTRLR SMPS OTP 8DIP
[Infineon Technologies](#)

RFQ



ICE3B3065I
IC OFFLINE CTRLR SMPS OTP TO220
[Infineon Technologies](#)

RFQ



ICE3B5065I
IC OFFLINE CTRLR SMPS OTP TO220
[Infineon Technologies](#)

RFQ



ICE3B3065P
INFINEON

RFQ



ICE3B2565
INFINEON

RFQ



ICE3B5065P
INFINEON

RFQ



ICE3B3565P
INFINEON

RFQ



ICE3B5065P-2
INFINEON

RFQ

Guess You May Looking For



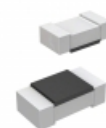
CRGV2010F61K9
RES SMD 61.9K OHM 1% 1/2W 2010
[TE Connectivity Passive Product](#)

RFQ



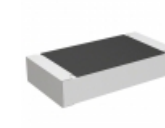
RNCF0805BTC1M96
RES SMD 1.96MOHM 0.1% 1/10W 0805
[Stackpole Electronics Inc.](#)

RFQ



CRT0603-FX-2000ELF
RES SMD 200 OHM 1% 1/10W 0603
[Bourns Inc.](#)

RFQ



CRCW1206510KDHTAP
RES SMD 510K OHM 0.5% 1/4W 1206
[Vishay Dale](#)

RFQ



RG1005P-2871-B-T5
RES SMD 2.87KOHM 0.1% 1/16W 0402
[Susumu](#)

RFQ



CRCW0805240MJPEAHR
RES SMD 240M OHM 5% 1/8W 0805
[Vishay Dale](#)

RFQ



RT0805BRE073K83L
RES SMD 3.83K OHM 0.1% 1/8W 0805
[Yageo](#)

RFQ



AT0402CRD071K15L
RES SMD 1.15K OHM 1/16W 0402
[Yageo](#)

RFQ



RNCF0402BKE18R2
RES SMD 18.2 OHM 0.1% 1/16W 0402
[Stackpole Electronics Inc.](#)

RFQ



AT0402CRD07619RL
RES SMD 619 OHM 0.25% 1/16W 0402
[Yageo](#)

RFQ