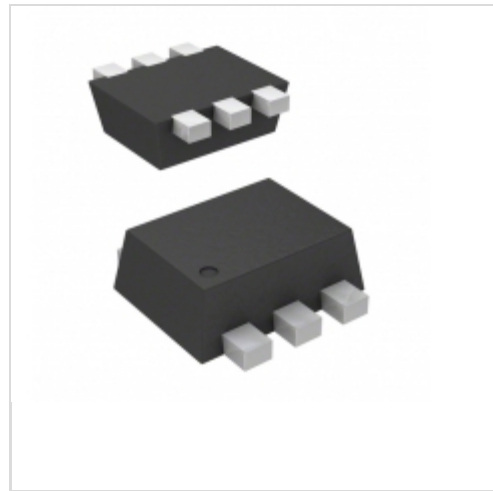


CMLT3904EG TR



Central Semiconductor
TRANS NPN 60V 0.2A SOT563
Lead free / RoHS Compliant
Discrete Semiconductor Products

[CMLT3904EG TR.pdf](#)

Buy Now

We can supply CMLT3904EG TR, use the request quote form to request CMLT3904EG TR price and lead time. Zeano is a professional electronic components distributor. With 3+ Million line items of available electronic components can ship in short lead-time, over 250 thousand part numbers of electronic components in stock for immediately delivery, which may include part number CMLT3904EG TR. The price and lead time for CMLT3904EG TR depending on the quantity required and warehouse location. Contact us and our sales representative will provide you price. We look forward to work with you.

Out Stock
0 pcs
Minimum: 1
Multiples: 100
Manufacturer lead time 10 weeks

| PRICE | |
|-----------|---------|
| 3000 pcs | \$0.183 |
| 6000 pcs | \$0.171 |
| 15000 pcs | \$0.159 |
| 30000 pcs | \$0.151 |

Shopping Process

1

Confirm the product

2

submit the order

3

payment

4

wait for delivery

5

receive the goods

Specifications

| | |
|---|--------------------|
| Voltage - Collector Emitter Breakdown (Max): | 40V |
| Vce Saturation (Max) @ Ib, Ic: | 100mV @ 5mA, 50mA |
| Transistor Type: | 2 NPN (Dual) |
| Supplier Device Package: | SOT-563 |
| Series: | - |
| Power - Max: | 150mW |
| Packaging: | Tape & Reel (TR) |
| Package / Case: | SOT-563, SOT-666 |
| Operating Temperature: | -65°C ~ 150°C (TJ) |
| Mounting Type: | Surface Mount |
| Frequency - Transition: | 300MHz |
| DC Current Gain (hFE) (Min) @ Ic, Vce: | 30 @ 100mA, 1V |
| Current - Collector Cutoff (Max): | - |
| Current - Collector (Ic) (Max): | 200mA |

Related products



CMLT3906ETR

[CENTRAL](#)

RFQ



CMLT3906EG TR

TRANS 2PNP 40V 0.2A SOT563

[Central Semiconductor Corp](#)

RFQ



CMLT3906E TR

TRANS PNP 60V 0.2A SOT563

[Central Semiconductor Corp](#)

RFQ



CMLT3906EG

[CENTRAL](#)

RFQ



CMLT3820G TR

TRANS NPN 60V 1A SOT563

[Central Semiconductor Corp](#)

RFQ



CMLT3904E TR

TRANS 2NPN 40V 0.2A SOT563

[Central Semiconductor Corp](#)

RFQ



CMLT3946EG TR

TRANS ARRAY 60V 0.2A SOT563

[Central Semiconductor Corp](#)

RFQ



CMLT2907A TR

TRANS 2PNP 60V 0.6A SOT563

[Central Semiconductor Corp](#)

RFQ



CMLT2222AG TR

TRANS 2NPN 40V 0.6A SOT563

[Central Semiconductor Corp](#)

RFQ



CMLT2907A BK

TRANS 2PNP 60V 0.6A SOT563

[Central Semiconductor Corp](#)

RFQ

Guess You May Looking For



103990080

EASYVR SHIELD 3 FOR ARDUINO

[Seeed Technology Co., Ltd](#)

RFQ



2340

ADDON TOUCH HAT CAP RASPBERRY PI

[Adafruit Industries LLC](#)

RFQ



MIKROE-1197

BOARD THERMO CLICK

[MikroElektronika](#)

RFQ



DPP901G000

GROVE MS8607 DEV BOARD

[TE Connectivity Measurement Specialties](#)

RFQ



STEVAL-ILL044V1

BOARD DEMO ISOLATED HVLED815PF

[STMMicroelectronics](#)

RFQ



TPS7A4001EVM-709

EVAL MODULE FOR TPS7A4001-709

[Texas Instruments](#)

RFQ



NCP580EVB

BOARD EVALUATION NCP580

[ON Semiconductor](#)

RFQ



TPS72715YFFEVM-407

EVAL MODULE FOR TPS72715

[Texas Instruments](#)

RFQ



ADP1741-EVALZ

BOARD EVAL 2A ADP1741

[Analog Devices Inc.](#)

RFQ



MIKROE-2560

SMOKE CLICK

[MikroElektronika](#)

RFQ