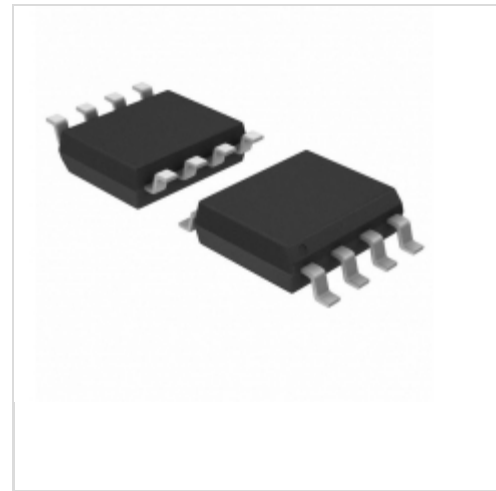


AT25040AN-10SU-2.7


[Microchip Technology](#)
 IC EEPROM 4KBIT 20MHZ 8SOIC
 Lead free / RoHS Compliant
 Integrated Circuits (ICs)

[AT25040AN-10SU-2.7.pdf](#)

Buy Now

part#AT25040AN-10SU-2.7 is available, see description of AT25040AN-10SU-2.7 as below .

use the request quote form to request AT25040AN-10SU-2.7 price and lead time. Buy Electronic Components at zeanoit.com .we are an independent distributor of electronic components with extensive inventory in stock.

The price and lead time for AT25040AN-10SU-2.7 depending on the quantity required, availability and warehouse location.Contact us today and our sales team will send you quotation soon.

Email: sales@zeanoit.com

Shopping Process

1

Confirm the product

2

submit the order

3

payment

4

wait for delivery

5

receive the goods

Specifications

Voltage - Supply:	2.7 V ~ 5.5 V
Supplier Device Package:	8-SOIC
Speed:	20MHz
Series:	-
Packaging:	Tube
Package / Case:	8-SOIC (0.154", 3.90mm Width)
Operating Temperature:	-40°C ~ 85°C (TA)
Memory Type:	Non-Volatile
Memory Size:	4Kb (512 x 8)
Memory Format:	EEPROM
Interface:	SPI Serial

Related products



AT25040AN-10SI-2.7-T
 IC EEPROM 4KBIT 20MHZ 8SOIC
[Microchip Technology](#)

RFQ



AT25040AN-10SU-2.7-T
 IC EEPROM 4KBIT 20MHZ 8SOIC
[Microchip Technology](#)

RFQ



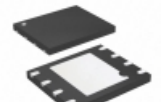
AT25040AN-10SJ-2.7
[ATMEL](#)

RFQ



AT25040AN-10SU-1.8-T
 IC EEPROM 4KBIT 20MHZ 8SOIC
[Microchip Technology](#)

RFQ



AT25040AY1-10YI-1.8
 IC EEPROM 4KBIT 20MHZ 8MAP
[Microchip Technology](#)

RFQ



AT25040AN-10SQ-2.7
 in stock
[ATMEL](#)

RFQ



AT25040AY1-10YI-2.7
 in stock
[ATMEL](#)

RFQ



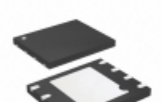
AT25040AN-10SU2.7
 in stock
[ATMEL](#)

RFQ



AT25040AN-10SU-1.8
 IC EEPROM 4KBIT 20MHZ 8SOIC
[Microchip Technology](#)

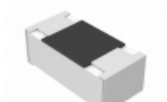
RFQ



AT25040AY1-10YI-2.7
 IC EEPROM 4KBIT 20MHZ 8MAP
[Microchip Technology](#)

RFQ

Guess You May Looking For



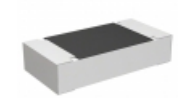
ERJ-1GEF39R2C
 RES SMD 39.2 OHM 1% 1/20W 0201
[Panasonic Electronic Components](#)

RFQ



RG2012P-2552-B-T5
 RES SMD 25.5K OHM 0.1% 1/8W 0805
[Susumu](#)

RFQ



ERA-8ARW2802V
 RES SMD 28K OHM 0.05% 1/4W 1206
[Panasonic Electronic Components](#)

RFQ



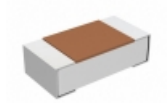
RE1206FRE0730R1L
 RES SMD 30.1 OHM 1% 1/4W 1206
[Yageo](#)

RFQ



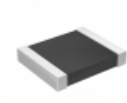
AA0805FR-0711R3L
 RES SMD 11.3 OHM 1% 1/8W 0805
[Yageo](#)

RFQ



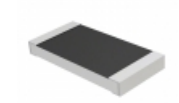
TRR03EZPJ1R2
 RES SMD 1.2 OHM 5% 1/10W 0603
[Rohm Semiconductor](#)

RFQ



AF1210FR-0711R5L
 RES SMD 11.5 OHM 1% 1/2W 1210
[Yageo](#)

RFQ



RMCF2010FT48R7
 RES SMD 48.7 OHM 1% 3/4W 2010
[Stackpole Electronics Inc.](#)

RFQ



AT0402BRD0784K5L
 RES SMD 84.5KOHM 0.1% 1/16W 0402
[Yageo](#)

RFQ



RT1206DRE07162RL
 RES SMD 162 OHM 0.5% 1/4W 1206
[Yageo](#)

RFQ