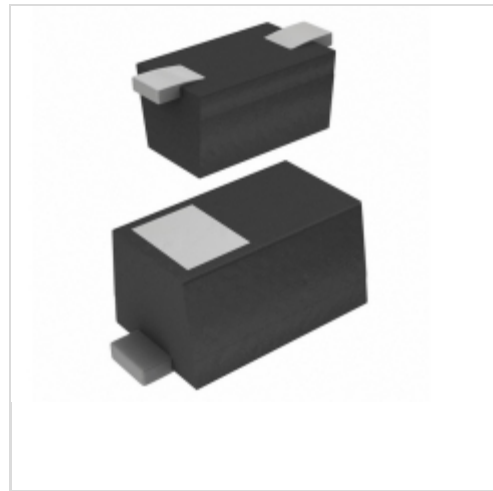


BZT52C10T-TP



Micro Commercial Components (MCC)

DIODE ZENER 10V 100MW SOD523
 Lead free / RoHS Compliant
 Discrete Semiconductor Products

[BZT52C10T-TP.pdf](#)

Buy Now

Images are for reference only.

See Product Specifications for product details.

If you are interested to buy BZT52C10T-TP, Just Email us.

Sales@zeanoit.com

our sales team will reply you within 24 hours

Out Stock

0 pcs

Minimum:1

Multiples:100

Manufacturer lead time 10 weeks

PRICE

8000 pcs	\$0.04
16000 pcs	\$0.034
24000 pcs	\$0.032
56000 pcs	\$0.03
65535 pcs	\$0.026

Shopping Process

1

Confirm the product

2

submit the order

3

payment

4

wait for delivery

5

receive the goods

Specifications

Voltage - Zener (Nom) (Vz):	10V
Voltage - Forward (Vf) (Max) @ If:	900mV @ 10mA
Tolerance:	±6%
Supplier Device Package:	SOD-523
Series:	-
Power - Max:	100mW
Packaging:	Tape & Reel (TR)
Package / Case:	SC-79, SOD-523
Operating Temperature:	-65°C ~ 150°C
Mounting Type:	Surface Mount
Impedance (Max) (Zzt):	20 Ohm
Current - Reverse Leakage @ Vr:	200nA @ 7V

Related products



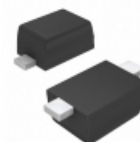
BZT52C10S-7
 DIODE ZENER 10V 200MW SOD323
[Diodes Incorporated](#)

RFQ



BZT52C11 WG
[CJ](#)

RFQ



BZT52C10T-7
 DIODE ZENER 10V 300MW SOD523
[Diodes Incorporated](#)

RFQ



BZT52C11

RFQ



BZT52C10S-TP
 DIODE ZENER 10V 200MW SOD323
[Micro Commercial Co](#)

RFQ



BZT52C11-7-F
 DIODE ZENER 11V 500MW SOD123
[Diodes Incorporated](#)

RFQ



BZT52C11-13
 DIODE ZENER 11V 500MW SOD123
[Diodes Incorporated](#)

RFQ



BZT52C10S WF
[CJ](#)

RFQ



BZT52C11-7
 DIODE ZENER 11V 500MW SOD123
[Diodes Incorporated](#)

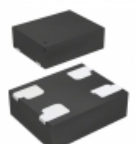
RFQ



BZT52C10S-7-F
 DIODE ZENER 10V 200MW SOD323
[Diodes Incorporated](#)

RFQ

Guess You May Looking For



SIT1602BC-12-18N-65.000000G
 -20 TO 70C, 2520, 25PPM, 1.8V, 6
[SITIME](#)

RFQ



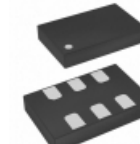
PXETHLJANF-8.000000
 OSC XO 8.0000MHZ CMOS SMD
[Taitien](#)

RFQ



SIT8208AC-82-25E-25.000625Y
 OSC MEMS 25.000625MHZ LVCMOS SMD

RFQ



SIT9120AI-2C3-33S74.250000T
 -40 TO 85C, 5032, 50PPM, 3.3V, 7
[SITIME](#)

RFQ



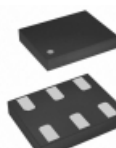
SIT9120AC-2B2-XXE50.000000D
 -20 TO 70C, 3225, 25PPM, 2.25V-3
[SITIME](#)

RFQ



SIT9120AC-2B2-25E106.250000E
 -20 TO 70C, 3225, 25PPM, 2.5V, 1
[SITIME](#)

RFQ



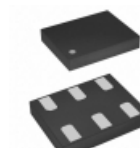
SIT9120AI-1B2-25E133.330000E
 -40 TO 85C, 3225, 10PPM, 2.5V, 1
[SITIME](#)

RFQ



SIT9120AC-1B2-XXE106.250000G
 -20 TO 70C, 3225, 25PPM, 2.25V-3
[SITIME](#)

RFQ



SIT9120AI-1B1-XXS166.666600G
 -40 TO 85C, 3225, 20PPM, 2.25V-3
[SITIME](#)

RFQ



ECX-L37CM-32.000
 OSC XO 32.0000MHZ LVDS SMD
[ECS Inc.](#)

RFQ