

INA284AIDGKR



N/A
IC CURRENT SHUNT MONITOR 8VSSOP
Lead free / RoHS Compliant
Integrated Circuits (ICs)

Buy Now

Out Stock

0 pcs

Minimum:1

Multiples:1

Manufacturer lead time 10 weeks

Part No. INA284AIDGKR Is this a common-used part? : Yes

Shipped from : HK or Singapore warehouse

Same model may have multiple batches, images only for reference.

ECAD Models : Contact us to get

Email:sales@zeanoit.com

Shopping Process

1

Confirm the product

2

submit the order

3

payment

4

wait for delivery

5

receive the goods

Specifications

Voltage - Input:	-14 V ~ 80 V
Supplier Device Package:	8-VSSOP
Series:	Zero-Drift
Sensing Method:	High/Low-Side
Packaging:	Tape & Reel (TR)
Package / Case:	8-TSSOP, 8-MSOP (0.118", 3.00mm Width)
Operating Temperature:	-40°C ~ 125°C
Mounting Type:	Surface Mount
Function:	Current Monitor
Current - Output:	-
Accuracy:	±0.4%

Related products



INA283AQDGKRQ1

IC CURRENT SHUNT MONITOR 8VSSOP
[N/A](#)

RFQ



INA284AID

IC CURRENT SHUNT MONITOR 8SOIC
[N/A](#)

RFQ



INA285AID

IC CURRENT SHUNT MONITOR 8SOIC
[N/A](#)

RFQ



INA283AIDR

IC CURRENT SHUNT MONITOR 8SOIC
[N/A](#)

RFQ



INA284AQDRQ1

IC CURRENT SHUNT MONITOR 8SOIC
[N/A](#)

RFQ



INA283AIDGKT

IC CURRENT SHUNT MONITOR 8VSSOP
[N/A](#)

RFQ



INA284AQDGKRQ1

IC CURRENT SHUNT MONITOR 8VSSOP
[N/A](#)

RFQ



INA284AIDGKT

IC CURRENT SHUNT MONITOR 8VSSOP
[N/A](#)

RFQ



INA283AQDRQ1

IC CURRENT SHUNT MONITOR 8SOIC
[N/A](#)

RFQ



INA284AIDR

IC CURRENT SHUNT MONITOR 8SOIC
[N/A](#)

RFQ

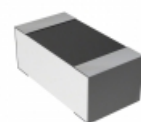
Guess You May Looking For



TLM2BER027JTD

RES SMD 0.027 OHM 5% 1/2W 1206
[TE Connectivity Passive Product](#)

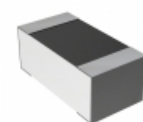
RFQ



CPF0603B536RE1

RES SMD 536 OHM 0.1% 1/16W 0603
[TE Connectivity Passive Product](#)

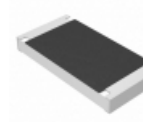
RFQ



CPF0603B1K37E1

RES SMD 1.37KOHM 0.1% 1/16W 0603
[TE Connectivity Passive Product](#)

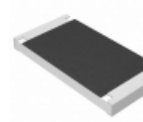
RFQ



ERJ-S1DF8873U

RES SMD 887K OHM 1% 3/4W 2010
[Panasonic Electronic Components](#)

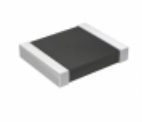
RFQ



ERJ-S1TF2701U

RES SMD 2.7K OHM 1% 1W 2512
[Panasonic Electronic Components](#)

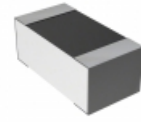
RFQ



RT1210BRD071K78L

RES SMD 1.78K OHM 0.1% 1/4W 1210
[Yageo](#)

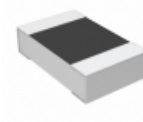
RFQ



CPF0603B115KE1

RES SMD 115K OHM 0.1% 1/16W 0603
[TE Connectivity Passive Product](#)

RFQ



CPF0805B1K82E1

RES SMD 1.82KOHM 0.1% 1/10W 0805
[TE Connectivity Passive Product](#)

RFQ



RG3216P-3480-B-T1

RES SMD 348 OHM 0.1% 1/4W 1206
[Susumu](#)

RFQ



RT1206CRC0741K2L

RES SMD 41.2KOHM 0.25% 1/4W 1206
[Yageo](#)

RFQ