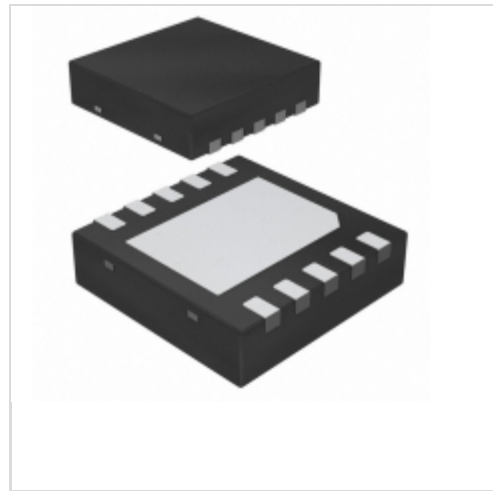


LM5101CSD



N/A
 IC DRVR HALF BRDG 100V 1A 10WSON
 Contains lead / RoHS non-compliant
 Integrated Circuits (ICs)

[Buy Now](#)

1. Please confirm the Detail which include the part no. and the manufacturer of the products when ordering.
2. If you have bill of material (BOM) list require to quote, you could send to our email.
3. You can email us to change the order details before shipment.
4. Orders cannot be canceled after shipping the packages.

Shopping Process



1
Confirm the product



2
submit the order



3
payment



4
wait for delivery



5
receive the goods

Specifications

Voltage - Supply:	9 V ~ 14 V
Supplier Device Package:	10-WSON (4x4)
Series:	-
Rise / Fall Time (Typ):	990ns, 715ns
Packaging:	Tape & Reel (TR)
Package / Case:	10-WDFN Exposed Pad
Operating Temperature:	-40°C ~ 125°C (TJ)
Number of Drivers:	2
Mounting Type:	Surface Mount
Logic Voltage - VIL, VIH:	2.3V, -
Input Type:	Non-Inverting
High Side Voltage - Max (Bootstrap):	118V
Gate Type:	N-Channel MOSFET
Driven Configuration:	Half-Bridge
Current - Peak Output (Source, Sink):	1A, 1A
Channel Type:	Independent

Related products



LM5101CMYE/NOPB
 IC DVR HALF-BRDG 100V 1A 8-EMSOP
 N/A

[RFQ](#)



LM5101CMY/NOPB
 IC DVR HALF-BRDG 100V 1A 8-EMSOP
 N/A

[RFQ](#)



LM5101M/NOPB
 IC DVR HALF-BRIDGE HV 8-SOIC
 N/A

[RFQ](#)



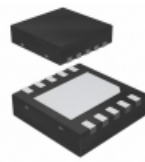
LM5101CMYE
 NSC

[RFQ](#)



LM5101CSDX
 IC DVR HALF BRIDG 100V 1A 10WSON
 N/A

[RFQ](#)



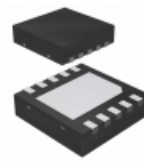
LM5101CSDX/NOPB
 IC DVR HALF BRIDG 100V 1A 10WSON
 N/A

[RFQ](#)



LM5101CMYX/NOPB
 IC DVR HALF-BRDG 100V 1A 8-EMSOP
 N/A

[RFQ](#)



LM5101CSD/NOPB
 IC DRVR HALF BRDG 100V 1A 10WSON
 N/A

[RFQ](#)



LM5101CMYX
 TI/NS

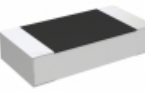
[RFQ](#)



LM5101M
 IC DVR HALF-BRIDGE HV 8-SOIC
 N/A

[RFQ](#)

Guess You May Looking For



CPF1206B3K09E1
 RES SMD 3.09K OHM 0.1% 1/8W 1206
 TE Connectivity Passive Product

[RFQ](#)



RNCF1210BTC38R3
 RES SMD 38.3 OHM 0.1% 1/3W 1210
 Stackpole Electronics Inc.

[RFQ](#)



ERA-2HRC6810X
 RES SMD 681 OHM 0.25% 1/16W 0402
 Panasonic Electronic Components

[RFQ](#)



RNCF2512BTC274R
 RES SMD 274 OHM 0.1% 3/4W 2512
 Stackpole Electronics Inc.

[RFQ](#)



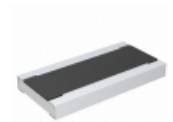
RNCF2512BTC300R
 RES SMD 300 OHM 0.1% 3/4W 2512
 Stackpole Electronics Inc.

[RFQ](#)



RNCF2512BTC1K50
 RES SMD 1.5K OHM 0.1% 3/4W 2512
 Stackpole Electronics Inc.

[RFQ](#)



RCWE102021L5FKEA
 RES SMD 0.0215 OHM 2W 2010 WIDE
 Vishay Dale

[RFQ](#)



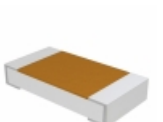
MCW0406MD1621BP100
 RES SMD 1.62K OHM 1/4W 0604 WIDE
 Vishay Beyschlag

[RFQ](#)



RT0805WRD0726K1L
 RES SMD 26.1KOHM 0.05% 1/8W 0805
 Yageo

[RFQ](#)



TNPW12068K45BETA
 RES SMD 8.45K OHM 0.1% 1/4W 1206
 Vishay Dale

[RFQ](#)