

**LMH6526SPX/NOPB**


N/A  
 IC LASER DVR 4CHAN 5.5V 28UQFN  
 Lead free / RoHS Compliant  
 Integrated Circuits (ICs)

**Buy Now**

1. Please confirm the Detail which include the part no. and the manufacturer of the products when ordering.
2. If you have bill of material (BOM) list require to quote, you could send to our email.
3. You can email us to change the order details before shipment.
4. Orders cannot be canceled after shipping the packages.

## Shopping Process

**1**

Confirm the product

**2**

submit the order

**3**

payment

**4**

wait for delivery

**5**

receive the goods

## Specifications

<b>Voltage - Supply:</b>	4.5 V ~ 5.5 V
<b>Type:</b>	Laser Diode Driver (CD/DVD)
<b>Supplier Device Package:</b>	28-UQFN (5x5)
<b>Series:</b>	LMH™
<b>Packaging:</b>	Tape & Reel (TR)
<b>Package / Case:</b>	28-UFQFN Exposed Pad
<b>Operating Temperature:</b>	-40°C ~ 85°C
<b>Number of Channels:</b>	4
<b>Mounting Type:</b>	Surface Mount
<b>Data Rate:</b>	-
<b>Current - Supply:</b>	33mA
<b>Current - Modulation:</b>	-

## Related products



**LMH6550MAX/NOPB**  
 IC OPAMP VFB 400MHZ 8SOIC  
[N/A](#)

RFQ



**LMH6550MA/NOPB**  
 IC OPAMP VFB 400MHZ 8SOIC  
[N/A](#)

RFQ



**LMH6550MA**  
 IC OPAMP VFB 400MHZ 8SOIC  
[N/A](#)

RFQ



**LMH6523SQ/NOPB**  
 IC OPAMP VGA 1.4GHZ 54WQFN  
[N/A](#)

RFQ



**LMH6526SP/NOPB**  
 IC LASER DVR 4CHAN 5.5V 28UQFN  
[N/A](#)

RFQ



**LMH6525SP/NOPB**  
 IC LASER DVR 4CHAN 5.5V 28UQFN  
[N/A](#)

RFQ



**LMH6523SQE/NOPB**  
 IC OPAMP VGA 1.4GHZ 54WQFN  
[N/A](#)

RFQ



**LMH6525SPX/NOPB**  
 IC LASER DVR 4CHAN 5.5V 28UQFN  
[N/A](#)

RFQ



**LMH6550MAX**  
 IC OPAMP VFB 400MHZ 8SOIC  
[N/A](#)

RFQ



**LMH6550MM/NOPB**  
 IC OPAMP VFB 400MHZ 8VSSOP  
[N/A](#)

RFQ

## Guess You May Looking For



**RG1608N-51R1-W-T5**  
 RES SMD 51.1OHM 0.05% 1/10W 0603  
[Susumu](#)

RFQ



**RG3216N-3002-B-T5**  
 RES SMD 30K OHM 0.1% 1/4W 1206  
[Susumu](#)

RFQ



**RG3216N-5490-B-T5**  
 RES SMD 549 OHM 0.1% 1/4W 1206  
[Susumu](#)

RFQ



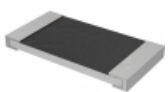
**RG3216N-5621-B-T5**  
 RES SMD 5.62K OHM 0.1% 1/4W 1206  
[Susumu](#)

RFQ



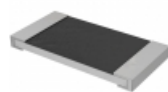
**RG3216N-1150-B-T5**  
 RES SMD 115 OHM 0.1% 1/4W 1206  
[Susumu](#)

RFQ



**RHC2512FT20R5**  
 RES SMD 20.5 OHM 1% 2W 2512  
[Stackpole Electronics Inc.](#)

RFQ



**RHC2512FT28R0**  
 RES SMD 28 OHM 1% 2W 2512  
[Stackpole Electronics Inc.](#)

RFQ



**RG1608N-1650-W-T1**  
 RES SMD 165 OHM 0.05% 1/10W 0603  
[Susumu](#)

RFQ



**RG1608N-1741-W-T1**  
 RES SMD 1.74K OHM 1/10W 0603  
[Susumu](#)

RFQ



**RG1608N-1371-W-T1**  
 RES SMD 1.37K OHM 1/10W 0603  
[Susumu](#)

RFQ