

**MAX6425UK26+T**



**Maxim Integrated**

IC MPU/RESET CIRC 2.63V SOT23-5

Lead free / RoHS Compliant

Integrated Circuits (ICs)

[1.MAX6425UK26+T.pdf](#)

[2.MAX6425UK26+T.pdf](#)

**Buy Now**

**Out Stock**

**0 pcs**

Minimum:1

Multiples:100

Manufacturer lead time 10 weeks

Images are for reference only.

See Product Specifications for product details.

If you are interested to buy MAX6425UK26+T,Just Email us.

Sales@zeanoit.com

our sales team will reply you within 24 hours

Shopping Process

**1**

**Confirm the product**

**2**

**submit the order**

**3**

**payment**

**4**

**wait for delivery**

**5**

**receive the goods**

Specifications

<b>Voltage - Threshold:</b>	2.625V
<b>Type:</b>	Simple Reset/Power-On Reset
<b>Supplier Device Package:</b>	SOT-23-5
<b>Series:</b>	-
<b>Reset Timeout:</b>	Adjustable/Selectable
<b>Reset:</b>	Active Low
<b>Packaging:</b>	Tape & Reel (TR)
<b>Package / Case:</b>	SC-74A, SOT-753
<b>Output:</b>	Open Drain or Open Collector
<b>Operating Temperature:</b>	-40°C ~ 125°C (TA)
<b>Number of Voltages Monitored:</b>	1
<b>Mounting Type:</b>	Surface Mount

Related products



**MAX6425UK29+T**

IC SUPERVISOR 2.9V RESET SOT23-5  
[Maxim Integrated](#)

RFQ



**MAX6425UK22+T**

IC MPU/RESET CIRC 2.188V SOT23-5  
[Maxim Integrated](#)

RFQ



**MAX6425UK29-T**

in stock  
[MAXIM](#)

RFQ



**MAX6425UK27+T**

IC MPU/RESET CIRC 2.70V SOT23-5  
[Maxim Integrated](#)

RFQ



**MAX6425UK24+T**

IC MPU/RESET CIRC 2.40V SOT23-5  
[Maxim Integrated](#)

RFQ



**MAX6425UK22-T**

in stock  
[MAXIM](#)

RFQ



**MAX6425UK25+T**

IC MPU/RESET CIRC 2.50V SOT23-5  
[Maxim Integrated](#)

RFQ



**MAX6425UK26-T**

in stock  
[MAXIM](#)

RFQ



**MAX6425UK21+T**

IC MPU/RESET CIRC 2.10V SOT23-5  
[Maxim Integrated](#)

RFQ

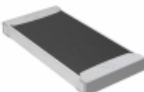


**MAX6425UK28+T**

IC MPU/RESET CIRC 2.80V SOT23-5  
[Maxim Integrated](#)

RFQ

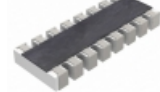
Guess You May Looking For



**TNPW2512604KBEEY**

RES SMD 604K OHM 0.1% 1/2W 2512  
[Vishay Dale](#)

RFQ



**YC248-FR-0710R2L**

RES ARRAY 8 RES 10.2 OHM 1606  
[Yageo](#)

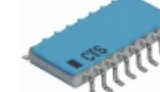
RFQ



**766163474GP**

RES ARRAY 8 RES 470K OHM 16SOIC  
[CTS Resistor Products](#)

RFQ



**767161562G**

RES ARRAY 15 RES 5.6K OHM 16SOIC  
[CTS Resistor Products](#)

RFQ



**CFM14JT470R**

RES 470 OHM 1/4W 5% CF MINI  
[Stackpole Electronics Inc.](#)

RFQ



**RC14JT82R0**

RES 82 OHM 1/4W 5% AXIAL  
[Stackpole Electronics Inc.](#)

RFQ



**CMF5512K100FKR6**

RES 12.1K OHM 1/2W 1% AXIAL  
[Vishay Dale](#)

RFQ



**RN60C2203FRE6**

RES 220K OHM 1/4W 1% AXIAL  
[Vishay Dale](#)

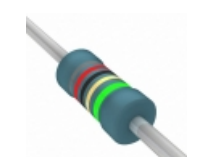
RFQ



**CMF5547K000DHRE**

RES 47K OHM 1/2W .5% AXIAL  
[Vishay Dale](#)

RFQ



**MBA02040C8209DC100**

RES 82 OHM 0.4W 0.5% AXIAL  
[Vishay BC Components](#)

RFQ