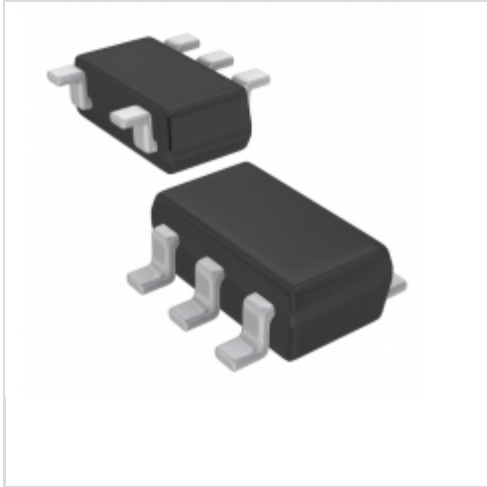


## XC6121F716MR-G



**Torex Semiconductor Ltd.**

IC WATCHDOG TIMER SOT-25

Lead free / RoHS Compliant

Integrated Circuits (ICs)

[XC6121F716MR-G.pdf](#)

**Buy Now**

**Out Stock**

**0 pcs**

Minimum:1

Multiples:100

Manufacturer lead time 10 weeks

Images are for reference only.

See Product Specifications for product details.

If you are interested to buy XC6121F716MR-G, Just Email us.

Sales@zeanoit.com

our sales team will reply you within 24 hours

### Shopping Process

**1**

Confirm the product

**2**

submit the order

**3**

payment

**4**

wait for delivery

**5**

receive the goods

### Specifications

<b>Voltage - Threshold:</b>	1.6V
<b>Type:</b>	Watchdog Circuit
<b>Supplier Device Package:</b>	SOT-25
<b>Series:</b>	-
<b>Reset Timeout:</b>	800 ms Typical
<b>Reset:</b>	Active Low
<b>Packaging:</b>	Tape & Reel (TR)
<b>Package / Case:</b>	SC-74A, SOT-753
<b>Output:</b>	Open Drain or Open Collector
<b>Operating Temperature:</b>	-40°C ~ 85°C (TA)
<b>Number of Voltages Monitored:</b>	1
<b>Mounting Type:</b>	Surface Mount

### Related products



**XC6121F649MR-G**  
IC WATCHDOG TIMER SOT-25  
[Torex Semiconductor Ltd](#)

RFQ



**XC6121F650ER-G**  
IC WATCHDOG TIMER 6-USP  
[Torex Semiconductor Ltd](#)

RFQ



**XC6121F718MR-G**  
IC WATCHDOG TIMER SOT-25  
[Torex Semiconductor Ltd](#)

RFQ



**XC6121F716ER-G**  
IC WATCHDOG TIMER 6-USP  
[Torex Semiconductor Ltd](#)

RFQ



**XC6121F717ER-G**  
IC WATCHDOG TIMER 6-USP  
[Torex Semiconductor Ltd](#)

RFQ



**XC6121F717MR-G**  
IC WATCHDOG TIMER SOT-25  
[Torex Semiconductor Ltd](#)

RFQ



**XC6121F719ER-G**  
IC WATCHDOG TIMER 6-USP  
[Torex Semiconductor Ltd](#)

RFQ



**XC6121F650MR-G**  
IC WATCHDOG TIMER SOT-25  
[Torex Semiconductor Ltd](#)

RFQ



**XC6121F718ER-G**  
IC WATCHDOG TIMER 6-USP  
[Torex Semiconductor Ltd](#)

RFQ



**XC6121F649ER-G**  
IC WATCHDOG TIMER 6-USP  
[Torex Semiconductor Ltd](#)

RFQ

### Guess You May Looking For



**9T04021A1272FBHF3**  
RES SMD 12.7K OHM 1% 1/16W 0402  
[Yageo](#)

RFQ



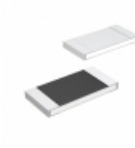
**RG2012V-1151-B-T1**  
RES SMD 1.15K OHM 0.1% 1/8W 0805  
[Susumu](#)

RFQ



**RG2012N-2550-B-T1**  
RES SMD 255 OHM 0.1% 1/8W 0805  
[Susumu](#)

RFQ



**MCR25JZH10R7**  
RES SMD 10.7 OHM 1% 1/4W 1210  
[Rohm Semiconductor](#)

RFQ



**VSSR1601472JTF**  
RES ARRAY 15 RES 4.7K OHM 16SSOP  
[Vishay Thin Film](#)

RFQ



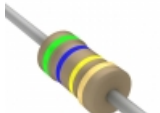
**RT1415B6TR13**  
RES NTWRK 8 RES 4.7K OHM 12LBGA  
[CTS Resistor Products](#)

RFQ



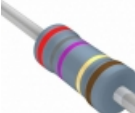
**MP925-10.0K-1%**  
RES 10K OHM 25W 1% TO220  
[Caddock Electronics Inc.](#)

RFQ



**CF18JB560K**  
RES 560K OHM 1/8W 5% AXIAL  
[Stackpole Electronics Inc.](#)

RFQ



**MFR-25FRF52-28R7**  
RES 28.7 OHM 1/4W 1% AXIAL  
[Yageo](#)

RFQ



**RN60D64R9FR36**  
RES 64.9 OHM 1/4W 1% AXIAL  
[Vishay Dale](#)

RFQ