

UC3706DWTR



N/A
 IC DUAL OUTPUT DRIVER 16-SOIC
 Lead free / RoHS Compliant
 Integrated Circuits (ICs)

Buy Now

Part No. UC3706DWTR Is this a common-used part? : Yes
 Shipped from : HK or Singapore warehouse
 Same model may have multiple batches, images only for reference.
 ECAD Models : Contact us to get
 Email:sales@zeanoit.com

Out Stock

0 pcs

Minimum:1

Multiples:1

Manufacturer lead time 10 weeks

Shopping Process

1

Confirm the product

2

submit the order

3

payment

4

wait for delivery

5

receive the goods

Specifications

Voltage - Supply:	5 V ~ 40 V
Supplier Device Package:	16-SOIC
Series:	-
Rise / Fall Time (Typ):	40ns, 30ns
Packaging:	Tape & Reel (TR)
Package / Case:	16-SOIC (0.295", 7.50mm Width)
Operating Temperature:	0°C ~ 70°C (TA)
Number of Drivers:	2
Mounting Type:	Surface Mount
Logic Voltage - VIL, VIH:	0.8V, 2.2V
Input Type:	Inverting, Non-Inverting
Gate Type:	N-Channel MOSFET
Driven Configuration:	Low-Side
Current - Peak Output (Source, Sink):	1.5A, 1.5A
Channel Type:	Independent

Related products



UC3707DWG4
 IC DUAL CH PWR DRIVER 16-SOIC
 N/A

RFQ



UC3705TG3
 IC HIGH SID POWER DRIVER TO220-5
 N/A

RFQ



UC3706N
 IC HS MOSFET DRIVER 16-DIP
 N/A

RFQ



UC3706DWTRG4
 IC DUAL OUTPUT DRIVER 16-SOIC
 N/A

RFQ



UC3705T
 IC COMPLEMENT PWR DRVR TO-220-5
 N/A

RFQ



UC3706DW
 IC DUAL OUTPUT DRIVER 16-SOIC
 N/A

RFQ



UC3707DW
 IC DUAL CH PWR DRIVER 16-SOIC
 N/A

RFQ



UC3706DWG4
 IC DUAL OUTPUT DRIVER 16-SOIC
 N/A

RFQ



UC3706NG4
 IC HS MOSFET DRIVER 16-DIP
 N/A

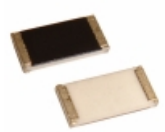
RFQ



UC3705NG4
 IC COMPLEMENT POWER DRIVER 8-DIP
 N/A

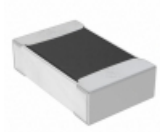
RFQ

Guess You May Looking For



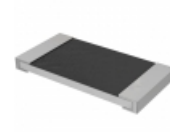
CSRN2010FK33L0
 RES SMD 0.033 OHM 1% 1W 2010
[Stackpole Electronics Inc.](#)

RFQ



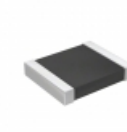
RNCF0805BTT249R
 RES SMD 249 OHM 0.1% 1/8W 0805
[Stackpole Electronics Inc.](#)

RFQ



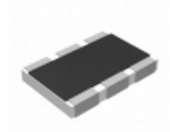
CSR2512FT70L0
 RES SMD 0.07 OHM 1% 2W 2512
[Stackpole Electronics Inc.](#)

RFQ



RT1210CRE0722RL
 RES SMD 22 OHM 0.25% 1/4W 1210
[Yageo](#)

RFQ



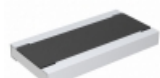
AA1218FK-074R22L
 RES SMD 4.22 OHM 1W 1812 WIDE
[Yageo](#)

RFQ



RNCF1210BTC357R
 RES SMD 357 OHM 0.1% 1/3W 1210
[Stackpole Electronics Inc.](#)

RFQ



RCWE1020R360FKEA
 RES SMD 0.36 OHM 2W 2010 WIDE
[Vishay Dale](#)

RFQ



RG2012P-71R5-W-T5
 RES SMD 71.5 OHM 0.05% 1/8W 0805
[Susumu](#)

RFQ



CRT0805-CX-82R5ELF
 RES SMD 82.5OHM 0.25% 1/8W 0805
[Bourns Inc.](#)

RFQ



RCL122522K6FKEG
 RES SMD 22.6K OHM 2W 2512 WIDE
[Vishay Dale](#)

RFQ