

NIS5112D2R2G



[AMI Semiconductor / ON Semiconductor](#)

IC ELECTRONIC FUSE HOTSWAP 8SOIC

Lead free / RoHS Compliant

Integrated Circuits (ICs)

[NIS5112D2R2G.pdf](#)

Buy Now

part#NIS5112D2R2G is available, see description of NIS5112D2R2G as below .
use the request quote form to request NIS5112D2R2G price and lead time.
Buy Electronic Components at zeanoit.com .we are an independent distributor of electronic components with extensive inventory in stock.
The price and lead time for NIS5112D2R2G depending on the quantity required, availability and warehouse location.Contact us today and our sales team will send you quotation soon.
Email: sales@zeanoit.com

Out Stock

0 pcs

Minimum:1

Multiples:100

Manufacturer lead time 10 weeks

PRICE

2500 pcs	\$1.47
5000 pcs	\$1.416

Shopping Process

1

Confirm the product

2

submit the order

3

payment

4

wait for delivery

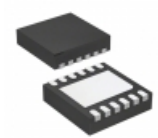
5

receive the goods

Specifications

Voltage - Input:	9 V ~ 18 V
Supplier Device Package:	8-SOIC
Series:	-
Sensing Method:	-
Packaging:	Tape & Reel (TR)
Package / Case:	8-SOIC (0.154", 3.90mm Width)
Operating Temperature:	-40°C ~ 175°C
Mounting Type:	Surface Mount
Function:	Electronic Fuse
Current - Output:	2A
Accuracy:	-

Related products



NIS5102QP1HT1G

IC CTRL/FET HOT SWAP 12V 12-PLL
[ON Semiconductor](#)

RFQ



NIS5132-35GEVB

BOARD EVAL ELECT FUSE NIS5132-35
[ON Semiconductor](#)

RFQ



NIS5112D1R2G1

IC ELECTRONIC FUSE HOTSWAP 8SOIC
[ON Semiconductor](#)

RFQ



NIS5132MN1-FN-7

IC LOAD SWITCH 12V 3.6A 10-UDFN
[Diodes Incorporated](#)

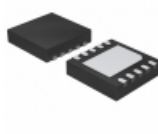
RFQ



NIS5112D1R2G

IC ELECTRONIC FUSE HOTSWAP 8SOIC
[ON Semiconductor](#)

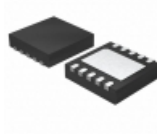
RFQ



NIS5132MN2TXG

IC ELECTRONIC FUSE 12V 10DFN
[ON Semiconductor](#)

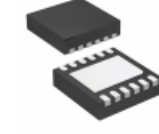
RFQ



NIS5132MN2-FN-7

IC LOAD SWITCH 12V 3.6A 10-UDFN
[Diodes Incorporated](#)

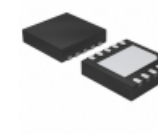
RFQ



NIS5102QP2HT1

IC CTRL/FET HOT SWAP 12V 12-PLL
[ON Semiconductor](#)

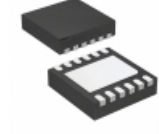
RFQ



NIS5132MN1TXG

IC ELECTRONIC FUSE 10DFN
[ON Semiconductor](#)

RFQ

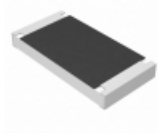


NIS5102QP2HT1G

IC CTRL/FET HOT SWAP 12V 12-PLL
[ON Semiconductor](#)

RFQ

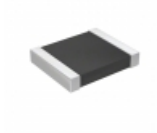
Guess You May Looking For



ERJ-S1DF6653U

RES SMD 665K OHM 1% 3/4W 2010
[Panasonic Electronic Components](#)

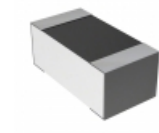
RFQ



RT1210BRD07301RL

RES SMD 301 OHM 0.1% 1/4W 1210
[Yageo](#)

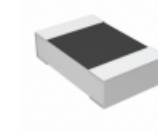
RFQ



CPF0603B221KE1

RES SMD 221K OHM 0.1% 1/16W 0603
[TE Connectivity Passive Product](#)

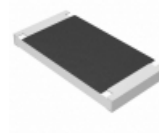
RFQ



CPF0805B768KE1

RES SMD 768K OHM 0.1% 1/10W 0805
[TE Connectivity Passive Product](#)

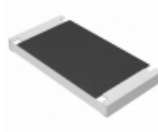
RFQ



ERJ-S1TF11R8U

RES SMD 11.8 OHM 1% 1W 2512
[Panasonic Electronic Components](#)

RFQ



ERJ-S1TF8660U

RES SMD 866 OHM 1% 1W 2512
[Panasonic Electronic Components](#)

RFQ



RT1206CRC0718K7L

RES SMD 18.7KOHM 0.25% 1/4W 1206
[Yageo](#)

RFQ



RT1206CRC0722K1L

RES SMD 22.1KOHM 0.25% 1/4W 1206
[Yageo](#)

RFQ



RT1206CRC07470KL

RES SMD 470K OHM 0.25% 1/4W 1206
[Yageo](#)

RFQ



RT1206CRC073K9L

RES SMD 3.9K OHM 0.25% 1/4W 1206
[Yageo](#)

RFQ