

AT25080B-PU


[Microchip Technology](#)
 IC EEPROM 8KBIT 20MHZ 8DIP
 Lead free / RoHS Compliant
 Integrated Circuits (ICs)

[AT25080B-PU.pdf](#)

Buy Now

We can supply AT25080B-PU, use the request quote form to request AT25080B-PU price and lead time. Zeano is a professional electronic components distributor. With 3+ Million line items of available electronic components can ship in short lead-time, over 250 thousand part numbers of electronic components in stock for immediately delivery, which may include part number AT25080B-PU. The price and lead time for AT25080B-PU depending on the quantity required and warehouse location. Contact us and our sales representative will provide you price. We look forward to work with you.

Shopping Process

1

Confirm the product

2

submit the order

3

payment

4

wait for delivery

5

receive the goods

Specifications

Voltage - Supply:	1.8 V ~ 5.5 V
Supplier Device Package:	8-PDIP
Speed:	5MHz, 10MHz, 20MHz
Series:	-
Packaging:	Tube
Package / Case:	8-DIP (0.300", 7.62mm)
Operating Temperature:	-40°C ~ 85°C (TA)
Memory Type:	Non-Volatile
Memory Size:	8Kb (1K x 8)
Memory Format:	EEPROM
Interface:	SPI Serial

Related products



AT25080B-SSHL-B
 IC EEPROM 8KBIT 20MHZ 8SOIC
[Microchip Technology](#)

RFQ



AT25080B-SSHL-T
 IC EEPROM 8KBIT 20MHZ 8SOIC
[Microchip Technology](#)

RFQ



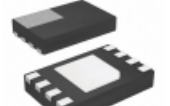
AT25080B-TH-T
 IC EEPROM 8KBIT 20MHZ 8TSSOP
[Microchip Technology](#)

RFQ



AT25080B
 SPI Serial EEPROMs 8K (1024 x 8) 16K (2048 x 8)
[ATMEL](#)

RFQ



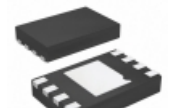
AT25080AY6-10YH-1.8
 IC EEPROM 8KBIT 20MHZ 8MINIMAP
[Microchip Technology](#)

RFQ



AT25080A_07
 SPI Serial EEPROMs
[ATMEL](#)

RFQ



AT25080B-MAHL-T
 IC EEPROM 8KBIT 20MHZ 8UDFN
[Microchip Technology](#)

RFQ



AT25080B-TH-B
 IC EEPROM 8KBIT 20MHZ 8TSSOP
[Microchip Technology](#)

RFQ



AT25080B-CUL-T
 IC EEPROM 8KBIT 20MHZ 8VFBGA
[Microchip Technology](#)

RFQ



AT25080B-SSPD-T
[ATMEL](#)

RFQ

Guess You May Looking For



RG1608P-2552-B-T5
 RES SMD 25.5KOHM 0.1% 1/10W 0603
[Susumu](#)

RFQ



CRCW12061R69FKEA
 RES SMD 1.69 OHM 1% 1/4W 1206
[Vishay Dale](#)

RFQ



MCR03ERTF4120
 RES SMD 412 OHM 1% 1/10W 0603
[Rohm Semiconductor](#)

RFQ



ERA-3AEB5622V
 RES SMD 56.2KOHM 0.1% 1/10W 0603
[Panasonic Electronic Components](#)

RFQ



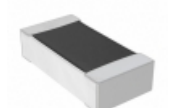
CRCW040234K8FKTD
 RES SMD 34.8K OHM 1% 1/16W 0402
[Vishay Dale](#)

RFQ



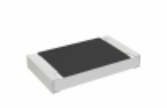
RT0402FRD0724K9L
 RES SMD 24.9K OHM 1% 1/16W 0402
[Yageo](#)

RFQ



RNCS0603DTE49R9
 RES SMD 49.9 OHM 0.5% 1/16W 0603
[Stackpole Electronics Inc.](#)

RFQ



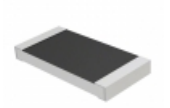
RCS08052K49FKEA
 RES SMD 2.49K OHM 1% 0.4W 0805
[Vishay Dale](#)

RFQ



RC0100FR-0712K1L
 RES SMD 12.1K OHM 1% 1/32W 01005
[Yageo](#)

RFQ



RMCF2010FT34R8
 RES SMD 34.8 OHM 1% 3/4W 2010
[Stackpole Electronics Inc.](#)

RFQ