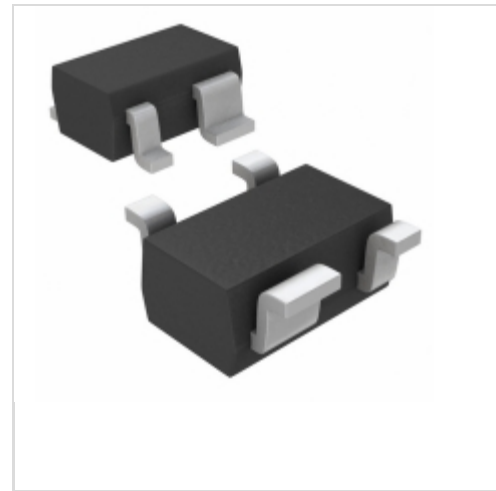


## MAX6385XS39D2-T



**Maxim Integrated**

IC MPU/RESET CIRC 3.90V SC70-4

Contains lead / RoHS non-compliant

Integrated Circuits (ICs)

[1.MAX6385XS39D2-T.pdf](#)

[2.MAX6385XS39D2-T.pdf](#)

**Buy Now**

part#MAX6385XS39D2-T is available, see description of MAX6385XS39D2-T as below . use the request quote form to request MAX6385XS39D2-T price and lead time. Buy Electronic Components at zeanoit.com .we are an independent distributor of electronic components with extensive inventory in stock. The price and lead time for MAX6385XS39D2-T depending on the quantity required, availability and warehouse location.Contact us today and our sales team will send you quotation soon.  
Email: sales@zeanoit.com

### Shopping Process

**1**

Confirm the product

**2**

submit the order

**3**

payment

**4**

wait for delivery

**5**

receive the goods

### Specifications

<b>Voltage - Threshold:</b>	3.9V
<b>Type:</b>	Simple Reset/Power-On Reset
<b>Supplier Device Package:</b>	SC-70-4
<b>Series:</b>	-
<b>Reset Timeout:</b>	20 ms Minimum
<b>Reset:</b>	Active High
<b>Packaging:</b>	Tape & Reel (TR)
<b>Package / Case:</b>	SC-82A, SOT-343
<b>Output:</b>	Push-Pull, Totem Pole
<b>Operating Temperature:</b>	-40°C ~ 125°C (TA)
<b>Number of Voltages Monitored:</b>	1
<b>Mounting Type:</b>	Surface Mount

### Related products



**MAX6385XS39D5-T**  
IC MPU/RESET CIRC 3.90V SC70-4  
[Maxim Integrated](#)

RFQ



**MAX6385XS38D7-T**  
in stock  
[MAXIM](#)

RFQ



**MAX6385XS39D1-T**  
IC MPU/RESET CIRC 3.90V SC70-4  
[Maxim Integrated](#)

RFQ



**MAX6385XS39D2-T**  
in stock  
[MAXIM](#)

RFQ



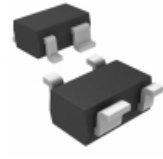
**MAX6385XS39D3-T**  
IC MPU/RESET CIRC 3.90V SC70-4  
[Maxim Integrated](#)

RFQ



**MAX6385XS39D4-T**  
in stock  
[MAXIM](#)

RFQ



**MAX6385XS38D7-T**  
IC MPU/RESET CIRC 3.80V SC70-4  
[Maxim Integrated](#)

RFQ



**MAX6385XS39D1-T**  
in stock  
[MAXIM](#)

RFQ



**MAX6385XS39D4-T**  
IC MPU/RESET CIRC 3.90V SC70-4  
[Maxim Integrated](#)

RFQ



**MAX6385XS39D3-T**  
in stock  
[MAXIM](#)

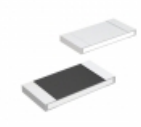
RFQ

### Guess You May Looking For



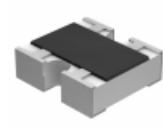
**9T08052A1132FBHFT**  
RES SMD 11.3K OHM 1% 1/8W 0805  
[Yageo](#)

RFQ



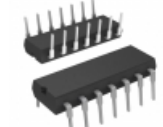
**MCR10EZHF1071**  
RES SMD 1.07K OHM 1% 1/8W 0805  
[Rohm Semiconductor](#)

RFQ



**CRA06S0435K10JTA**  
RES ARRAY 2 RES 5.1K OHM 0606  
[Vishay Dale](#)

RFQ



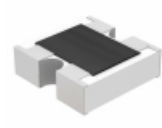
**4114R-1-201**  
RES ARRAY 7 RES 200 OHM 14DIP  
[Bourns Inc.](#)

RFQ



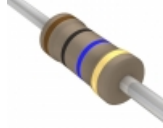
**RT2430B7TR7**  
RES NTWRK 18 RES 60 OHM 27LBGA  
[CTS Resistor Products](#)

RFQ



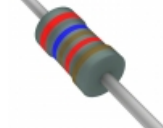
**MNR12E0ABJ202**  
RES ARRAY 2 RES 2K OHM 0606  
[Rohm Semiconductor](#)

RFQ



**CFR-25JR-52-10M**  
RES 10M OHM 1/4W 5% AXIAL  
[Yageo](#)

RFQ



**RNF14FTC26K1**  
RES 26.1K OHM 1/4W 1% AXIAL  
[Stackpole Electronics Inc.](#)

RFQ



**RNF12JTD16R0**  
RES 16 OHM 1/2W 5% AXIAL  
[Stackpole Electronics Inc.](#)

RFQ



**RN55C1050FR36**  
RES 105 OHM 1/8W 1% AXIAL  
[Vishay Dale](#)

RFQ