

BM2P094F-GE2



LAPIS Semiconductor
IC CONV DC/DC PWM 0.50MA 8SOP
Lead free / RoHS Compliant
Integrated Circuits (ICs)

[BM2P094F-GE2.pdf](#)

Buy Now

Out Stock
0 pcs
Minimum:1
Multiples:100
Manufacturer lead time 10 weeks

PRICE	
2500 pcs	\$0.658
5000 pcs	\$0.625
12500 pcs	\$0.602

Images are for reference only.
See Product Specifications for product details.
If you are interested to buy BM2P094F-GE2,Just Email us.
Sales@zeanoit.com
our sales team will reply you within 24 hours

Shopping Process

1

Confirm the product

2

submit the order

3

payment

4

wait for delivery

5

receive the goods

Specifications

Voltage - Supply (Vcc/Vdd):	8.9 V ~ 26 V
Voltage - Start Up:	13.5V
Voltage - Breakdown:	650V
Topology:	Flyback
Supplier Device Package:	8-SOP
Series:	-
Power (Watts):	-
Packaging:	Tape & Reel (TR)
Package / Case:	8-SOIC (0.173", 4.40mm Width)
Output Isolation:	Either
Operating Temperature:	-40°C ~ 105°C (TA)
Mounting Type:	Surface Mount
Internal Switch(s):	Yes
Frequency - Switching:	65kHz
Fault Protection:	Current Limiting, Over Voltage, Short Circuit
Duty Cycle:	75%
Control Features:	-

Related products

PANDUIT

BM2S-D0
MARKER TIE 50LB WR BLK 8"
[Panduit Corp](#)

RFQ



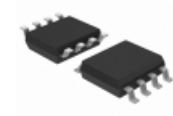
BM2R08MV1
RELAY TIMER MULTIFUNC DPDT 8A
[Crouzet](#)

RFQ

PANDUIT

BM2S-D
MARKER TIE 50LB NAT 8"
[Panduit Corp](#)

RFQ



BM2P093F-GE2
IC CONV DC/DC PWM 650V SOP8
[Rohm Semiconductor](#)

RFQ



BM2P094
IC CONV DC/DC PWM 0.50MA 7DIP
[Rohm Semiconductor](#)

RFQ

ROHM
SEMICONDUCTOR
LAPIS
SEMICONDUCTOR

BM2P094F
[ROHM](#)

RFQ



BM2P092F-GE2
IC CONV DC/DC PWM 650V SOP8
[Rohm Semiconductor](#)

RFQ

ROHM
SEMICONDUCTOR
LAPIS
SEMICONDUCTOR

BM2P093F
[ROHM](#)

RFQ

PANDUIT

BM2S-C
MARKER TIE 50LB NAT 8"
[Panduit Corp](#)

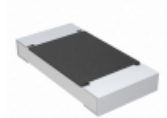
RFQ



BM2P093
IC CONV DC/DC PWM 0.50MA 7DIP
[Rohm Semiconductor](#)

RFQ

Guess You May Looking For



CRCW20103M60FKTF
RES SMD 3.6M OHM 1% 3/4W 2010
[Vishay Dale](#)

RFQ



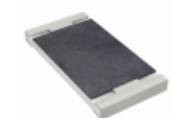
RT0805CRD0749K9L
RES SMD 49.9KOHM 0.25% 1/8W 0805
[Yageo](#)

RFQ



KTR25JZPJ135
RES SMD 1.3M OHM 5% 1/3W 1210
[Rohm Semiconductor](#)

RFQ



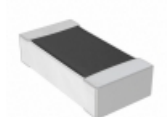
AC2512FK-07113RL
RES SMD 113 OHM 1% 1W 2512
[Yageo](#)

RFQ



RNCF1206DKE1R05
RES SMD 1.05 OHM 0.5% 1/8W 1206
[Stackpole Electronics Inc.](#)

RFQ



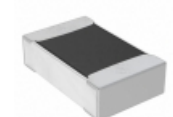
RNCF0603BTE17R4
RES SMD 17.4 OHM 0.1% 1/10W 0603
[Stackpole Electronics Inc.](#)

RFQ



RG1005P-1181-B-T5
RES SMD 1.18KOHM 0.1% 1/16W 0402
[Susumu](#)

RFQ



RNCS0805BTE18K2
RES SMD 18.2KOHM 0.1% 1/10W 0805
[Stackpole Electronics Inc.](#)

RFQ



RNCF0805BTE576K
RES SMD 576K OHM 0.1% 1/8W 0805
[Stackpole Electronics Inc.](#)

RFQ



RNCF0402BKE910R
RES SMD 910 OHM 0.1% 1/16W 0402
[Stackpole Electronics Inc.](#)

RFQ

