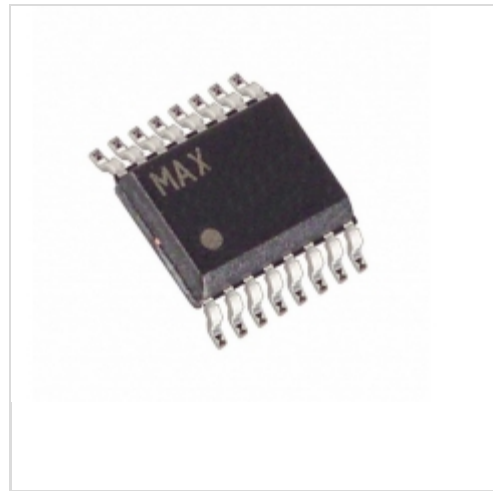


MAX1873SEEE+T



[Maxim Integrated](#)

IC CNTRLR CHARGE LI+ 16-QSOP

Lead free / RoHS Compliant

Integrated Circuits (ICs)

[1.MAX1873SEEE+T.pdf](#)

[2.MAX1873SEEE+T.pdf](#)

Buy Now

Out Stock

0 pcs

Minimum:1

Multiples:100

Manufacturer lead time 10 weeks

part#MAX1873SEEE+T is available, see description of MAX1873SEEE+T as below .

use the request quote form to request MAX1873SEEE+T price and lead time.

Buy Electronic Components at zeanoit.com .we are an independent distributor of electronic components with extensive inventory in stock.

The price and lead time for MAX1873SEEE+T depending on the quantity required, availability and warehouse location.Contact us today and our sales team will send you quotation soon.

Email: sales@zeanoit.com

Shopping Process

1

Confirm the product

2

submit the order

3

payment

4

wait for delivery

5

receive the goods

Specifications

| | |
|---------------------------------|--------------------------------|
| Voltage - Supply (Max): | 28V |
| Supplier Device Package: | 16-QSOP |
| Series: | - |
| Programmable Features: | - |
| Packaging: | Tape & Reel (TR) |
| Package / Case: | 16-SSOP (0.154", 3.90mm Width) |
| Operating Temperature: | -40°C ~ 85°C (TA) |
| Number of Cells: | 3 |
| Interface: | - |
| Fault Protection: | - |
| Current - Charging: | Constant - Programmable |
| Charge Current - Max: | 4A |
| Battery Pack Voltage: | 12.6V |
| Battery Chemistry: | Multi-Chemistry |

Related products



MAX1873SEEE+

IC CNTRLR CHARGE LI+ 16-QSOP

[Maxim Integrated](#)

RFQ



MAX1873REEE

in stock

[MAXIM](#)

RFQ



MAX1873REEE+

IC CNTRLR CHARGE LI+ 16-QSOP

[Maxim Integrated](#)

RFQ



MAX1874

in stock

[MAXIM](#)

RFQ



MAX1873TEEE+T

IC CNTRLR CHARGE LI+ 16-QSOP

[Maxim Integrated](#)

RFQ



MAX1873TEEE+

IC CNTRLR CHARGE LI+ 16-QSOP

[Maxim Integrated](#)

RFQ



MAX1874E

in stock

[MAXIM](#)

RFQ



MAX1873REEE+T

IC CNTRLR CHARGE LI+ 16-QSOP

[Maxim Integrated](#)

RFQ



MAX1873SEEE

in stock

[MAXIM](#)

RFQ



MAX1873TEEE

in stock

[MAXIM](#)

RFQ

Guess You May Looking For

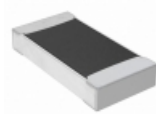


RNCF1206BTE931R

RES SMD 931 OHM 0.1% 1/3W 1206

[Stackpole Electronics Inc.](#)

RFQ



RNCS1206BTE191K

RES SMD 191K OHM 0.1% 1/8W 1206

[Stackpole Electronics Inc.](#)

RFQ

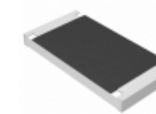


RNCF2010DTC374K

RES SMD 374K OHM 0.5% 1/3W 2010

[Stackpole Electronics Inc.](#)

RFQ



ERJ-S1TJ824U

RES SMD 820K OHM 5% 1W 2512

[Panasonic Electronic Components](#)

RFQ

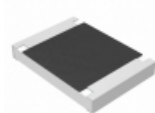


RT0805CRD0715R8L

RES SMD 15.8 OHM 0.25% 1/8W 0805

[Yageo](#)

RFQ

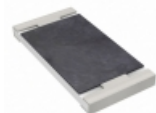


ERJ-S12F20R5U

RES SMD 20.5 OHM 1% 3/4W 1812

[Panasonic Electronic Components](#)

RFQ



RT2512FKE074K42L

RES SMD 4.42K OHM 1% 3/4W 2512

[Yageo](#)

RFQ



RNCF0805BKE26K1

RES SMD 26.1K OHM 0.1% 1/8W 0805

[Stackpole Electronics Inc.](#)

RFQ



RNCF2010DTE1M15

RES SMD 1.15M OHM 0.5% 1/4W 2010

[Stackpole Electronics Inc.](#)

RFQ



AT0805CRD07576RL

RES SMD 576 OHM 0.25% 1/8W 0805

[Yageo](#)

RFQ