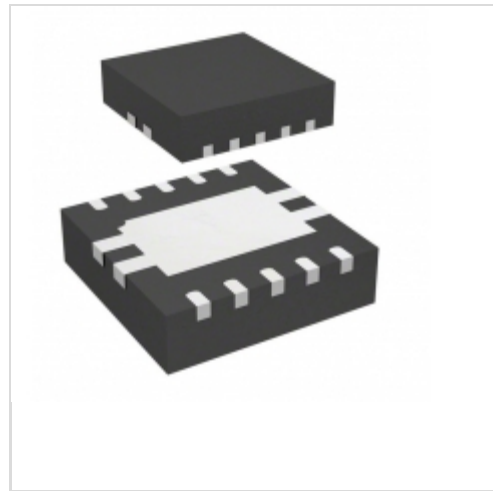


STEF12PUR



STMicroelectronics

IC ELECTRONIC FUSE 12V 10DFN
Lead free / RoHS Compliant
Integrated Circuits (ICs)

[STEF12PUR.pdf](#)

Buy Now

Images are for reference only.

See Product Specifications for product details.

If you are interested to buy STEF12PUR,Just Email us.

Sales@zeanoit.com

our sales team will reply you within 24 hours

Out Stock

0 pcs

Minimum:1

Multiples:100

Manufacturer lead time 10 weeks

PRICE

3000 pcs	\$0.56
6000 pcs	\$0.532
15000 pcs	\$0.512

Shopping Process

1

Confirm the product

2

submit the order

3

payment

4

wait for delivery

5

receive the goods

Specifications

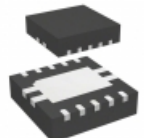
Voltage - Input:	7.6 V ~ 18 V
Supplier Device Package:	10-DFN (3x3)
Series:	-
Sensing Method:	-
Packaging:	Tape & Reel (TR)
Package / Case:	10-VDFDN Exposed Pad
Operating Temperature:	-40°C ~ 125°C
Mounting Type:	Surface Mount
Function:	Electronic Fuse
Current - Output:	3.6A
Accuracy:	-

Related products



STEF12EPUR/XYR
[STM](#)

RFQ



STEF05PUR
IC ELECTRONIC FUSE 5V 10DFN
[STMicroelectronics](#)

RFQ



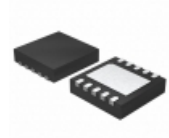
STEF12WPUR
IC ELECTRONIC FUSE 12V 10DFN
[STMicroelectronics](#)

RFQ



STEF05LPUR
IC ELECTRONIC FUSE 5V LINE DFN
[STMicroelectronics](#)

RFQ



STEF4SPUR
IC ELECTRONIC FUSE 10VDFPN
[STMicroelectronics](#)

RFQ



STEF12EPUR
IC ELECTRONIC FUSE 12V 10DFN
[STMicroelectronics](#)

RFQ



STEVAL-3DP001V1
EVAL BOARD FOR L6474
[STMicroelectronics](#)

RFQ



STEPPER-MTR-RD
REFERENCE DESIGN STEPPER MOTOR
[Silicon Labs](#)

RFQ



STEF12PUR/EPUR
[STM](#)

RFQ



STEF05WPUR
IC ELECTRONIC FUSE 5V LINE DFN
[STMicroelectronics](#)

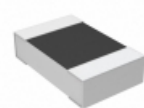
RFQ

Guess You May Looking For



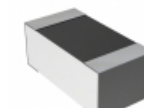
RG3216P-1371-B-T5
RES SMD 1.37K OHM 0.1% 1/4W 1206
[Susumu](#)

RFQ



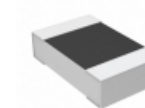
CPF0805B3K57E1
RES SMD 3.57KOHM 0.1% 1/10W 0805
[TE Connectivity Passive Product](#)

RFQ



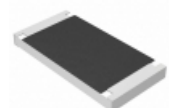
CPF0603B249KE1
RES SMD 249K OHM 0.1% 1/16W 0603
[TE Connectivity Passive Product](#)

RFQ



CPF0805B340RE1
RES SMD 340 OHM 0.1% 1/10W 0805
[TE Connectivity Passive Product](#)

RFQ



ERJ-S1TF8661U
RES SMD 8.66K OHM 1% 1W 2512
[Panasonic Electronic Components](#)

RFQ



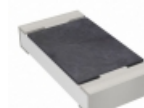
ERJ-S1TF10R0U
RES SMD 10 OHM 1% 1W 2512
[Panasonic Electronic Components](#)

RFQ



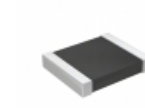
ERJ-S1TF22R6U
RES SMD 22.6 OHM 1% 1W 2512
[Panasonic Electronic Components](#)

RFQ



AT1206CRD07732KL
RES SMD 732K OHM 0.25% 1/4W 1206
[Yageo](#)

RFQ



RT1210BRD07523KL
RES SMD 523K OHM 0.1% 1/4W 1210
[Yageo](#)

RFQ



CRGH2512F23R2
RES SMD 23.2 OHM 1% 2W 2512
[TE Connectivity Passive Product](#)

RFQ