

**UCC3895DWG4**



N/A  
IC REG CTRLR PWM CM/VM 20-SOIC  
Lead free / RoHS Compliant  
Integrated Circuits (ICs)

**Buy Now**

Part No. UCC3895DWG4 Is this a common-used part? : Yes  
Shipped from : HK or Singapore warehouse  
Same model may have multiple batches, images only for reference.  
ECAD Models : Contact us to get  
Email:sales@zeanoit.com

**Out Stock**

**0 pcs**

Minimum:1

Multiples:1

Manufacturer lead time 10 weeks

Shopping Process



**Confirm the product**



**submit the order**



**payment**



**wait for delivery**



**receive the goods**

Specifications

|                                    |                                     |
|------------------------------------|-------------------------------------|
| <b>Voltage - Supply (Vcc/Vdd):</b> | 10 V ~ 16.5 V                       |
| <b>Voltage - Start Up:</b>         | 11V                                 |
| <b>Voltage - Breakdown:</b>        | -                                   |
| <b>Topology:</b>                   | Full-Bridge                         |
| <b>Supplier Device Package:</b>    | 20-SOIC                             |
| <b>Series:</b>                     | -                                   |
| <b>Power (Watts):</b>              | -                                   |
| <b>Packaging:</b>                  | Tube                                |
| <b>Package / Case:</b>             | 20-SOIC (0.295", 7.50mm Width)      |
| <b>Output Isolation:</b>           | Isolated                            |
| <b>Operating Temperature:</b>      | -55°C ~ 150°C (TJ)                  |
| <b>Internal Switch(s):</b>         | No                                  |
| <b>Frequency - Switching:</b>      | 1MHz                                |
| <b>Fault Protection:</b>           | -                                   |
| <b>Duty Cycle:</b>                 | 100%                                |
| <b>Control Features:</b>           | Frequency Control, Soft Start, Sync |

Related products



**UCC3889NG4**  
IC PWM FLYBACK ISOLATED VM 8DIP  
N/A

RFQ



**UCC3895DW**  
IC REG CTRLR PWM CM/VM 20-SOIC  
N/A

RFQ



**UCC3895DWRG4**  
TI

RFQ



**UCC388DP**  
TI

RFQ



**UCC3895DWTR**  
IC REG CTRLR PWM CM/VM 20-SOIC  
N/A

RFQ



**UCC3895DWRG4**  
IC REG CTRLR PWM CM/VM 20-SOIC  
N/A

RFQ



**UCC3895EVM-001**  
EVAL MOD FOR UCC3895  
N/A

RFQ



**UCC3889N**  
IC OFF-LINE PWR-SUP CNTRLR 8-DIP  
N/A

RFQ



**UCC3889EVM**  
EVAL MOD FOR UCC3889  
N/A

RFQ



**UCC3895DWR**  
in stock  
N/A

RFQ

Guess You May Looking For



**ERA-2HHD38R3X**  
RES SMD 38.3 OHM 0.5% 1/16W 0402  
Panasonic Electronic Components

RFQ



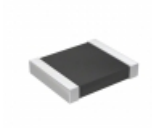
**RNCF0805BTC6R20**  
RES SMD 6.2 OHM 0.1% 1/8W 0805  
Stackpole Electronics Inc.

RFQ



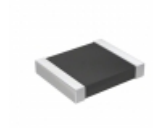
**SMM02070C3830FBS00**  
RES SMD 383 OHM 1% 1W MELF  
Vishay Beyschlag

RFQ



**RT1210DRD072K94L**  
RES SMD 2.94K OHM 0.5% 1/4W 1210  
Yageo

RFQ



**RT1210DRD0741R2L**  
RES SMD 41.2 OHM 0.5% 1/4W 1210  
Yageo

RFQ



**RNCF0805BTE118K**  
RES SMD 118K OHM 0.1% 1/8W 0805  
Stackpole Electronics Inc.

RFQ



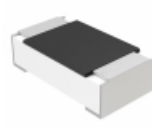
**RNCF0402BKE21K5**  
RES SMD 21.5KOHM 0.1% 1/16W 0402  
Stackpole Electronics Inc.

RFQ



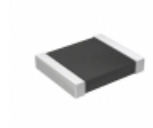
**AT0402CRD0782K5L**  
RES SMD 82.5K OHM 1/16W 0402  
Yageo

RFQ



**MCT06030D6650BP500**  
RES SMD 665 OHM 0.1% 1/10W 0603  
Vishay Beyschlag

RFQ



**RL1210FR-070R15L**  
RES SMD 0.15 OHM 1% 1/2W 1210  
Yageo

RFQ