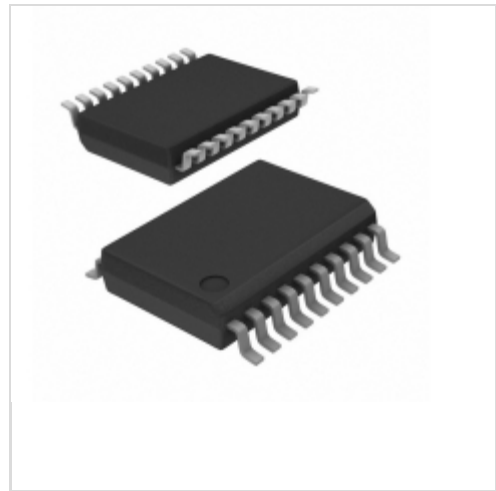


PIC16C54T-RC/SS



Microchip Technology

IC MCU 8BIT 768B OTP 20SSOP
Lead free / RoHS Compliant
Integrated Circuits (ICs)

- [1.PIC16C54T-RC/SS.pdf](#)
- [2.PIC16C54T-RC/SS.pdf](#)
- [3.PIC16C54T-RC/SS.pdf](#)

Buy Now

part#PIC16C54T-RC/SS is available, see description of PIC16C54T-RC/SS as below .
use the request quote form to request PIC16C54T-RC/SS price and lead time.
Buy Electronic Components at zeanoit.com .we are an independent distributor of electronic components with extensive inventory in stock.
The price and lead time for PIC16C54T-RC/SS depending on the quantity required, availability and warehouse location.Contact us today and our sales team will send you quotation soon.
Email: sales@zeanoit.com

Shopping Process

1

Confirm the product

2

submit the order

3

payment

4

wait for delivery

5

receive the goods

Specifications

Voltage - Supply (Vcc/Vdd):	3 V ~ 6.25 V
Supplier Device Package:	20-SSOP
Speed:	4MHz
Series:	PIC® 16C
RAM Size:	25 x 8
Program Memory Type:	OTP
Program Memory Size:	768B (512 x 12)
Peripherals:	POR, WDT
Packaging:	Tape & Reel (TR)
Package / Case:	20-SSOP (0.209", 5.30mm Width)
Oscillator Type:	External
Operating Temperature:	0°C ~ 70°C (TA)
Number of I/O:	12
EEPROM Size:	-
Data Converters:	-
Core Size:	8-Bit
Core Processor:	PIC
Connectivity:	-

Related products



PIC16C54T-RCE/SO
IC MCU 8BIT 768B OTP 18SOIC
[Microchip Technology](#)

RFQ



PIC16C54T-RCE/SS
IC MCU 8BIT 768B OTP 20SSOP
[Microchip Technology](#)

RFQ



PIC16C54T-LPI/SS
IC MCU 8BIT 768B OTP 20SSOP
[Microchip Technology](#)

RFQ



PIC16C54T-RC/SO
IC MCU 8BIT 768B OTP 18SOIC
[Microchip Technology](#)

RFQ



PIC16C54T-LPE/SS
IC MCU 8BIT 768B OTP 20SSOP
[Microchip Technology](#)

RFQ



PIC16C54T-RCI/SO
IC MCU 8BIT 768B OTP 18SOIC
[Microchip Technology](#)

RFQ



PIC16C54T-RCI/SS
IC MCU 8BIT 768B OTP 20SSOP
[Microchip Technology](#)

RFQ



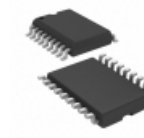
PIC16C54T-LPI/SO
IC MCU 8BIT 768B OTP 18SOIC
[Microchip Technology](#)

RFQ



PIC16C54T-XT/SO
IC MCU 8BIT 768B OTP 18SOIC
[Microchip Technology](#)

RFQ



PIC16C54T-LPE/SO
IC MCU 8BIT 768B OTP 18SOIC
[Microchip Technology](#)

RFQ

Guess You May Looking For



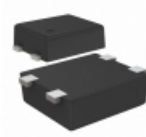
LYT2004D-TL
IC LED DRIVER OFFLINE 420MA 850
[Power Integrations](#)

RFQ



VNW100N04
MOSFET POWER TO-247
[STMicroelectronics](#)

RFQ



S-80151ANPF-JDCTFU
IC VOLT DETECTOR 5.1V SNT-4A
[SII Semiconductor Corporation](#)

RFQ



S-80131CLMC-JIQT2U
IC VOLT DETECTOR 3.1V SOT23-5
[SII Semiconductor Corporation](#)

RFQ



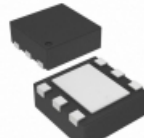
CAT1026WI-30-GT3
IC SUPERVISOR CPU 2K EEP8 850IC
[ON Semiconductor](#)

RFQ



TLVH431AIPK
IC VREF SHUNT ADJ SOT89-3
[Texas Instruments](#)

RFQ



TPS78227DRVT
IC REG LDO 2.7V 0.15A 650N
[Texas Instruments](#)

RFQ



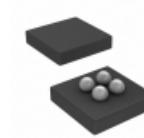
AP2121AK-2.5TRG1
IC REG LDO 2.5V 0.2A SOT25
[Diodes Incorporated](#)

RFQ



MC7808CD2TR4G
IC REG LDO 8V 1A D2PAK
[ON Semiconductor](#)

RFQ



TPS72718YFFR
IC REG LDO 1.8V 0.25A 4DSBGA
[Texas Instruments](#)

RFQ