

## TCR2EE28,LM(CT



### Toshiba Semiconductor and Storage

IC REG LDO 2.8V 0.2A ESV  
Lead free / RoHS Compliant  
Integrated Circuits (ICs)

[TCR2EE28,LM\(CT.pdf](#)

**Buy Now**

#### Out Stock

**0 pcs**  
Minimum:1  
Multiples:100  
Manufacturer lead time 10 weeks

#### PRICE

4000 pcs	\$0.066
8000 pcs	\$0.059
12000 pcs	\$0.053
28000 pcs	\$0.05
65535 pcs	\$0.042

We can supply TCR2EE28,LM(CT, use the request quote form to request TCR2EE28,LM(CT price and lead time. Zeano is a professional electronic components distributor. With 3+ Million line items of available electronic components can ship in short lead-time, over 250 thousand part numbers of electronic components in stock for immediately delivery, which may include part number TCR2EE28,LM(CT. The price and lead time for TCR2EE28,LM(CT depending on the quantity required and warehouse location. Contact us and our sales representative will provide you price. We look forward to work with you.

### Shopping Process

**1**

Confirm the product

**2**

submit the order

**3**

payment

**4**

wait for delivery

**5**

receive the goods

### Specifications

<b>Voltage - Output:</b>	2.8V
<b>Voltage - Input:</b>	Up to 5.5V
<b>Voltage - Dropout (Typical):</b>	0.18V @ 150mA
<b>Supplier Device Package:</b>	ESV
<b>Series:</b>	-
<b>Regulator Topology:</b>	Positive Fixed
<b>Packaging:</b>	Tape & Reel (TR)
<b>Package / Case:</b>	SOT-553
<b>Operating Temperature:</b>	-40°C ~ 85°C
<b>Number of Regulators:</b>	1
<b>Mounting Type:</b>	Surface Mount
<b>Current - Output:</b>	200mA
<b>Current - Limit (Min):</b>	-

### Related products

**TOSHIBA**  
Leading Innovation >>>

**TCR2EE27**  
TOSHIBA

RFQ



**TCR2EE28LPVTM**  
TOS

RFQ

**TOSHIBA**  
Leading Innovation >>>

**TCR2EE28**  
TOSHIBA

RFQ



**TCR2EE30,LM(CT**  
IC REG LDO 3V 0.2A ESV  
Toshiba Semiconductor and Storage

RFQ



**TCR2EE285,LM(CT**  
IC REG LINEAR 3.3V 0.2A ESV  
Toshiba Semiconductor and Storage

RFQ

**TOSHIBA**  
Leading Innovation >>>

**TCR2EE29**  
TOSHIBA

RFQ

**TOSHIBA**  
Leading Innovation >>>

**TCR2EE28,LM**  
TOSHIBA

RFQ

**TOSHIBA**  
Leading Innovation >>>

**TCR2EE305**  
TOSHIBA

RFQ

**TOSHIBA**  
Leading Innovation >>>

**TCR2EE20**  
TOSHIBA

RFQ



**TCR2EE25LM**  
TOS

RFQ

### Guess You May Looking For



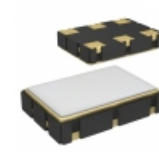
**SIT1602BC-32-30E-66.600000X**  
-20 TO 70C, 5032, 25PPM, 3.0V, 6  
SITIME

RFQ

**SiTime**

**SIT9120AC-2D2-33E133.333000T**  
-20 TO 70C, 7050, 25PPM, 3.3V, 1  
SITIME

RFQ



**511NBB-CBAG**  
OSC PROG CMOS 3.3V EN/DS 25PPM  
Silicon Labs

RFQ

**RFMD**

**UMX-314-D16-G**  
VCO 2375MHZ 0.5-4.5V 12.7X12.7MM  
RFMD

RFQ



**BZX79-B5V1,133**  
DIODE ZENER 5.1V 400MW ALF2  
Nexperia USA Inc.

RFQ



**ATS-17F-16-C3-R0**  
HEATSINK 54X54X10MM XCUT T412  
Advanced Thermal Solutions Inc.

RFQ

**api**  
technologies corp.

**62-LMB-050-5-11**  
LINE FILTER 250VAC 5A CHASS MNT  
API Technologies Corp

RFQ



**970500361**  
HEX SPACER M3 STEEL 50MM  
Würth Electronics Inc.

RFQ



**CM453232-150KL**  
FIXED IND 15UH 200MA 2.5 OHM SMD  
Bourns Inc.

RFQ

**EATON**  
Powering Business Worldwide

**UP2.8B-151-R**  
FIXED IND 150UH 620MA 971 MOHM  
Eaton

RFQ