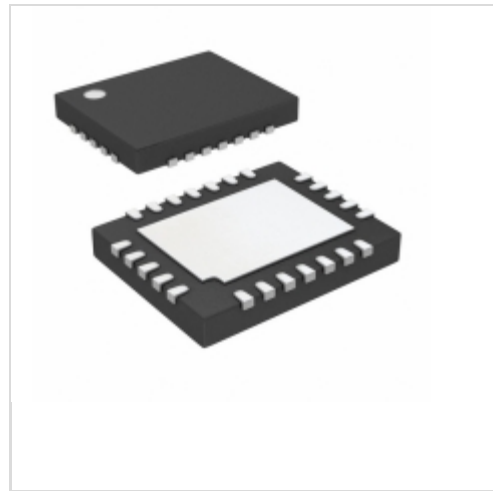


## LTC4225IUFD-2#TRPBF



[Linear Technology / Analog Devices](#)

IC CTRL HOT SWAP DUAL 24-QFN  
Lead free / RoHS Compliant  
Integrated Circuits (ICs)

[LTC4225IUFD-2#TRPBF.pdf](#)

**Buy Now**

**Out Stock**

**0 pcs**

Minimum:1

Multiples:100

Manufacturer lead time 10 weeks

Images are for reference only.

See Product Specifications for product details.

If you are interested to buy LTC4225IUFD-2#TRPBF,Just Email us.

Sales@zeanoit.com

our sales team will reply you within 24 hours

### Shopping Process

**1**

**Confirm the product**

**2**

**submit the order**

**3**

**payment**

**4**

**wait for delivery**

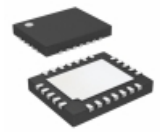
**5**

**receive the goods**

### Specifications

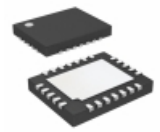
<b>Voltage - Supply:</b>	2.9 V ~ 18 V
<b>Type:</b>	Hot Swap Controller, OR Controller
<b>Supplier Device Package:</b>	24-QFN (5x4)
<b>Series:</b>	-
<b>Programmable Features:</b>	Current Limit, Fault Timeout, Slew Rate
<b>Packaging:</b>	Tape & Reel (TR)
<b>Package / Case:</b>	24-WFQFN Exposed Pad
<b>Operating Temperature:</b>	-40°C ~ 85°C
<b>Number of Channels:</b>	2
<b>Mounting Type:</b>	Surface Mount
<b>Internal Switch(s):</b>	No
<b>Features:</b>	Auto Retry, UVLO
<b>Feature Pins:</b>	CPO1, CPO2, /EN1, /EN2, /FAULT1, /FAULT2, IN1, IN2, INTVCC, ON1, ON2, /PWRGD1, /PWRGD2, TMR1, TMR2
<b>Current - Supply:</b>	2.8mA
<b>Current - Output (Max):</b>	-
<b>Applications:</b>	General Purpose

### Related products



**LTC4225IUFD-2#PBF**  
IC CONTROLLER HOT SWAP 24-QFN  
[Linear Technology](#)

RFQ



**LTC4225IUFD-1#TRPBF**  
IC CTRL HOT SWAP DUAL 24-QFN  
[Linear Technology](#)

RFQ



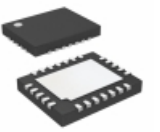
**LTC4226CMS-2#TRPBF**  
IC HOT SWAP CONTROL DUAL 16MSOP  
[Linear Technology](#)

RFQ



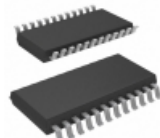
**LTC4226CMS-2#PBF**  
IC HOT SWAP CONTROL DUAL 16MSOP  
[Linear Technology](#)

RFQ



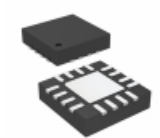
**LTC4225IUFD-1#PBF**  
IC CONTROLLER HOT SWAP 24-QFN  
[Linear Technology](#)

RFQ



**LTC4225IGN-2#PBF**  
IC CONTROLLER HOT SWAP 24-SSOP  
[Linear Technology](#)

RFQ



**LTC4226CUD-1#PBF**  
IC HOT SWAP CONTROL DUAL 16QFN  
[Linear Technology](#)

RFQ



**LTC4226CMS-1#TRPBF**  
IC HOT SWAP CONTROL DUAL 16MSOP  
[Linear Technology](#)

RFQ



**LTC4225IGN-2#TRPBF**  
IC CTRL HOT SWAP DUAL 24-SSOP  
[Linear Technology](#)

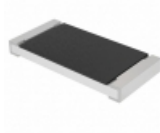
RFQ



**LTC4226CMS-1#PBF**  
IC HOT SWAP CONTROL DUAL 16MSOP  
[Linear Technology](#)

RFQ

### Guess You May Looking For



**CRCW2512130KFKEGHP**  
RES SMD 130K OHM 1% 1.5W 2512  
[Vishay Dale](#)

RFQ



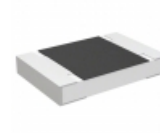
**RT1206BRC0716K5L**  
RES SMD 16.5K OHM 0.1% 1/4W 1206  
[Yageo](#)

RFQ



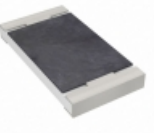
**CSR1225FT3R00**  
RES SMD 3 OHM 1% 3W 2512 WIDE  
[Stackpole Electronics Inc.](#)

RFQ



**CRCW121811R0JNEKHP**  
RES SMD 11 OHM 5% 1.5W 1218  
[Vishay Dale](#)

RFQ



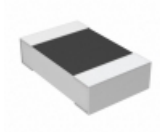
**RT2010DKE07332RL**  
RES SMD 332 OHM 0.5% 1/2W 2010  
[Yageo](#)

RFQ



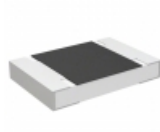
**ERA-2HRB1432X**  
RES SMD 14.3KOHM 0.1% 1/16W 0402  
[Panasonic Electronic Components](#)

RFQ



**RP73D2A2K94BTDF**  
RES SMD 2.94K OHM 0.1% 1/8W 0805  
[TE Connectivity Passive Product](#)

RFQ



**CRCW121830R9FKEKHP**  
RES SMD 30.9 OHM 1% 1.5W 1218  
[Vishay Dale](#)

RFQ



**RT0805BRB07200KL**  
RES SMD 200K OHM 0.1% 1/8W 0805  
[Yageo](#)

RFQ



**CSS2512FT1L50**  
RES SMD 0.0015 OHM 1% 2W 2512  
[Stackpole Electronics Inc.](#)

RFQ