

TLE7233GXUMA1



International Rectifier (Infineon Technologies)

IC DRIVER SPI 4CH LS 24-SSOP

Lead free / RoHS Compliant

Integrated Circuits (ICs)

[TLE7233GXUMA1.pdf](#)

Buy Now

part#TLE7233GXUMA1 is available, see description of TLE7233GXUMA1 as below . use the request quote form to request TLE7233GXUMA1 price and lead time. Buy Electronic Components at zeanoit.com .we are an independent distributor of electronic components with extensive inventory in stock. The price and lead time for TLE7233GXUMA1 depending on the quantity required, availability and warehouse location.Contact us today and our sales team will send you quotation soon.
Email: sales@zeanoit.com

Out Stock

0 pcs

Minimum:1

Multiples:100

Manufacturer lead time 10 weeks

Shopping Process

1

Confirm the product

2

submit the order

3

payment

4

wait for delivery

5

receive the goods

Specifications

Voltage - Supply (Vcc/Vdd):	3 V ~ 5.5 V
Voltage - Load:	4.5 V ~ 5.5 V
Switch Type:	General Purpose
Supplier Device Package:	PG-SSOP-24
Series:	-
Rds On (Typ):	1 Ohm
Ratio - Input:Output:	1:4
Packaging:	Tape & Reel (TR)
Package / Case:	24-SSOP (0.154", 3.90mm Width)
Output Type:	N-Channel
Output Configuration:	Low Side
Operating Temperature:	-40°C ~ 150°C (TJ)
Number of Outputs:	4
Interface:	SPI
Input Type:	-
Features:	-
Fault Protection:	Open Load Detect, Over Temperature
Current - Output (Max):	390mA

Related products



TLE7233EMXUMA1

IC DRIVER SPI 4CH LS 24-SSOP
[Infineon Technologies](#)

RFQ



TLE7234G

IC DRIVER SPI 8CH HS/LS DSO-20
[Infineon Technologies](#)

RFQ



TLE7232G

INFINEON

RFQ



TLE7234E

Infineon

RFQ



TLE7234SE

INFINEON

RFQ



TLE7234EXUMA1

IC DRIVER SPI 8CH HS/LS 24-SSOP
[Infineon Technologies](#)

RFQ



TLE7232GXUMA1

IC SPI DRIVER RELAY CTRL PDSO-24
[Infineon Technologies](#)

RFQ



TLE7233G

Infineon

RFQ



TLE7234EMXUMA1

IC DRIVER SPI RELAY CTRL 24SSOP
[Infineon Technologies](#)

RFQ

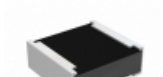


TLE7232GS

IC DRIVER SPI 8CH LS 24-SSOP
[Infineon Technologies](#)

RFQ

Guess You May Looking For



RCP0505B160RGS2

RES SMD 160 OHM 2% 5W 0505
[Vishay Dale](#)

RFQ



RCP2512B470RGS2

RES SMD 470 OHM 2% 22W 2512
[Vishay Dale](#)

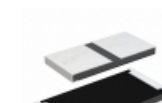
RFQ



RCP0505W16R0JS6

RES SMD 16 OHM 5% 5W 0505
[Vishay Dale](#)

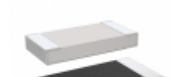
RFQ



RCP2512W91R0GS6

RES SMD 91 OHM 2% 22W 2512
[Vishay Dale](#)

RFQ



M55342H03B89B8RWS

RES SMD 89.8K OHM 0.1% 1/5W 1005
[Vishay Dale](#)

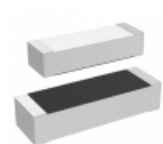
RFQ



M55342E06B143ERWS

RES SMD 143K OHM 1% 0.15W 0705
[Vishay Dale](#)

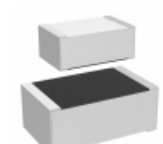
RFQ



M55342K04B562ARWS

RES SMD 562 OHM 0.1% 0.15W 1505
[Vishay Dale](#)

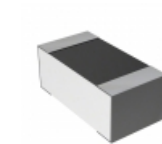
RFQ



M55342K06B1B18RWS

RES SMD 1.18KOHM 0.1% 0.15W 0805
[Vishay Dale](#)

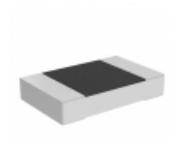
RFQ



Y1636400R000D9W

RES SMD 400 OHM 0.5% 1/10W 0603
[Vishay Foil Resistors \(Division of Vishay Precisio](#)

RFQ



PLTT0805Z4991QGT5

RES SMD 4.99KOHM 0.02% 1/4W 0805
[Vishay Thin Film](#)

RFQ

