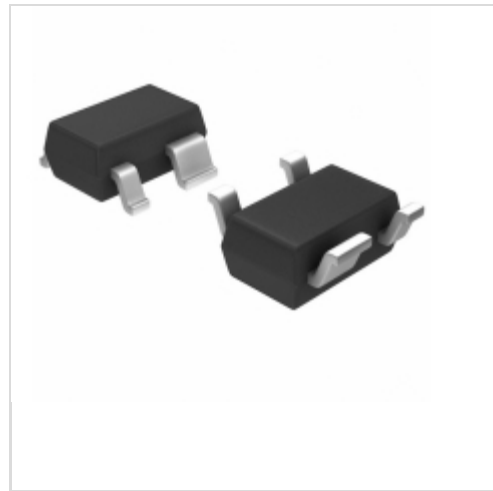


## S-1000C31-N4T1G



**SII Semiconductor Corporation**

IC VOLT DETECTOR 31V SC-82AB

Lead free / RoHS Compliant

Integrated Circuits (ICs)

[S-1000C31-N4T1G.pdf](#)

**Buy Now**

**Out Stock**

**0 pcs**

Minimum:1

Multiples:100

Manufacturer lead time 10 weeks

part#S-1000C31-N4T1G is available, see description of S-1000C31-N4T1G as below .

use the request quote form to request S-1000C31-N4T1G price and lead time.

Buy Electronic Components at zeanoit.com .we are an independent distributor of electronic components with extensive inventory in stock.

The price and lead time for S-1000C31-N4T1G depending on the quantity required, availability and warehouse location.Contact us today and our sales team will send you quotation soon.

Email: sales@zeanoit.com

### Shopping Process

**1**

**Confirm the product**

**2**

**submit the order**

**3**

**payment**

**4**

**wait for delivery**

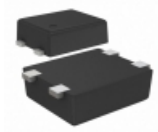
**5**

**receive the goods**

### Specifications

<b>Voltage - Threshold:</b>	3.1V
<b>Type:</b>	Voltage Detector
<b>Supplier Device Package:</b>	SC-82AB
<b>Series:</b>	S-1000
<b>Reset Timeout:</b>	-
<b>Reset:</b>	Active Low
<b>Packaging:</b>	Tape & Reel (TR)
<b>Package / Case:</b>	SC-82A, SOT-343
<b>Output:</b>	Push-Pull, Totem Pole
<b>Operating Temperature:</b>	-40°C ~ 85°C (TA)
<b>Number of Voltages Monitored:</b>	1
<b>Mounting Type:</b>	Surface Mount

### Related products



**S-1000C31-I4T1U**

IC VOLT DETECTOR 31V SNT-4A  
[SII Semiconductor Corporation](#)

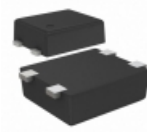
**RFQ**



**S-1000C31-M5T1G**

IC VOLT DETECTOR 31V SOT23-5  
[SII Semiconductor Corporation](#)

**RFQ**



**S-1000C31-I4T1G**

IC VOLT DETECTOR 31V SNT-4A  
[SII Semiconductor Corporation](#)

**RFQ**



**S-1000C31-M5T1U**

IC VOLT DETECTOR  
[SII Semiconductor Corporation](#)

**RFQ**



**S-1000C32-M5T1G**

IC VOLT DETECTOR 32V SOT23-5  
[SII Semiconductor Corporation](#)

**RFQ**



**S-1000C31-N4T1U**

IC VOLT DETECTOR  
[SII Semiconductor Corporation](#)

**RFQ**



**S-1000C32-M5T1U**

IC VOLT DETECTOR  
[SII Semiconductor Corporation](#)

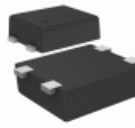
**RFQ**



**S-1000C30-N4T1U**

IC VOLT DETECTOR  
[SII Semiconductor Corporation](#)

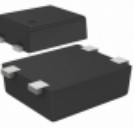
**RFQ**



**S-1000C32-I4T1U**

IC VOLT DETECTOR 32V SNT-4A  
[SII Semiconductor Corporation](#)

**RFQ**



**S-1000C32-I4T1G**

IC VOLT DETECTOR 32V SNT-4A  
[SII Semiconductor Corporation](#)

**RFQ**

### Guess You May Looking For



**9T04021A30R0CBHF3**

RES SMD 30 OHM 0.25% 1/16W 0402  
[Yageo](#)

**RFQ**



**RG2012P-3743-C-T5**

RES SMD 374K OHM 0.25% 1/8W 0805  
[Susumu](#)

**RFQ**



**RG2012N-4020-C-T5**

RES SMD 402 OHM 0.25% 1/8W 0805  
[Susumu](#)

**RFQ**



**AF164-FR-07287RL**

RES ARRAY 4 RES 287 OHM 1206  
[Yageo](#)

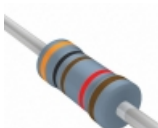
**RFQ**



**YC324-FK-07174RL**

RES ARRAY 4 RES 174 OHM 2012  
[Yageo](#)

**RFQ**



**MFR-25FBF52-30K1**

RES 30.1K OHM 1/4W 1% AXIAL  
[Yageo](#)

**RFQ**



**ERX-3SJ5R1A**

RES 5.1 OHM 3W 5% AXIAL  
[Panasonic Electronic Components](#)

**RFQ**



**MFR-25FBF52-374K**

RES 374K OHM 1/4W 1% AXIAL  
[Yageo](#)

**RFQ**



**WS3M22R0J**

RES 22 OHM 3W 5% AXIAL  
[Bourns Inc.](#)

**RFQ**



**RN55E1912FR36**

RES 19.1K OHM 1/8W 1% AXIAL  
[Vishay Dale](#)

**RFQ**