

**DC-WME-Y413-LX-B**



[Digi International](#)

RF TXRX MODULE WIFI RP-SMA ANT  
Lead free / RoHS Compliant  
RF/IF and RFID

[DC-WME-Y413-LX-B.pdf](#)

**Buy Now**

**Out Stock**

**0 pcs**

Minimum:1

Multiples:100

Manufacturer lead time 10 weeks

Images are for reference only.

See Product Specifications for product details.

If you are interested to buy DC-WME-Y413-LX-B,Just Email us.

Sales@zeanoit.com

our sales team will reply you within 24 hours

Shopping Process



**Confirm the product**



**submit the order**



**payment**



**wait for delivery**



**receive the goods**

Specifications

<b>Voltage - Supply:</b>	3.3V
<b>Series:</b>	Digi Connect® Wi-ME 9210
<b>Serial Interfaces:</b>	I <sup>2</sup> C, SPI
<b>Sensitivity:</b>	-69dBm
<b>RF Family/Standard:</b>	WiFi
<b>Protocol:</b>	802.11b/g/n
<b>Power - Output:</b>	17dBm
<b>Packaging:</b>	Bulk
<b>Package / Case:</b>	Module
<b>Operating Temperature:</b>	-40°C ~ 85°C
<b>Mounting Type:</b>	Surface Mount
<b>Modulation:</b>	CCK, DBPSK, DQPSK
<b>Memory Size:</b>	8MB Flash, 16MB SDRAM
<b>Frequency:</b>	2.4GHz
<b>Data Rate:</b>	65Mbps
<b>Current - Transmitting:</b>	346mA
<b>Current - Receiving:</b>	346mA
<b>Antenna Type:</b>	Not Included, RP-SMA

Related products



**DC-WSP-01-C-25**  
RF TXRX MODULE WIFI RP-SMA ANT  
[Digi International](#)

RFQ



**DC-WME-Y402-C-B**  
RF TXRX MODULE WIFI RP-SMA ANT  
[Digi International](#)

RFQ



**DC-WSP-01-C**  
RF TXRX MODULE WIFI RP-SMA ANT  
[Digi International](#)

RFQ



**DC-WSP-01-C-W-25**  
RF TXRX MODULE WIFI RP-SMA ANT  
[Digi International](#)

RFQ



**DC-WME-Y413-C-B**  
RF TXRX MODULE WIFI RP-SMA ANT  
[Digi International](#)

RFQ



**DC-WSP-01-C-W**  
RF TXRX MODULE WIFI RP-SMA ANT  
[Digi International](#)

RFQ



**DC-WME-Y402-JT**  
RF TXRX MODULE WIFI RP-SMA ANT  
[Digi International](#)

RFQ



**DC-WME-Y413-C**  
RF TXRX MODULE WIFI RP-SMA ANT  
[Digi International](#)

RFQ



**DC-WSP-01-JT**  
RF TXRX MODULE WIFI RP-SMA ANT  
[Digi International](#)

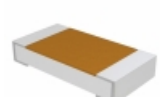
RFQ



**DC-WME-Y413-LX**  
RF TXRX MODULE WIFI RP-SMA ANT  
[Digi International](#)

RFQ

Guess You May Looking For



**D55342H07B464ERWS**  
RES SMD 464K OHM 1% 1/4W 1206  
[Vishay Dale](#)

RFQ



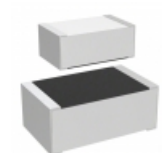
**M55342E06B6E19RWS**  
RES SMD 6.19K OHM 1% 0.15W 0705  
[Vishay Dale](#)

RFQ



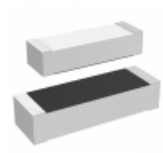
**M55342E06B5E49RWS**  
RES SMD 5.49K OHM 1% 0.15W 0705  
[Vishay Dale](#)

RFQ



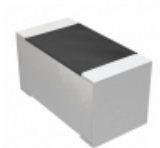
**M55342E06B97B6RWS**  
RES SMD 97.6KOHM 0.1% 0.15W 0805  
[Vishay Dale](#)

RFQ



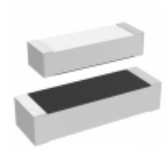
**M55342E04B86B6RWS**  
RES SMD 86.6KOHM 0.1% 0.15W 1505  
[Vishay Dale](#)

RFQ



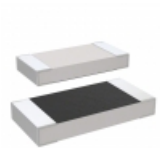
**M55342H12B3H30RWS**  
RES SMD 3.3K OHM 2% 1/10W 0603  
[Vishay Dale](#)

RFQ



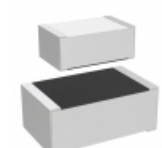
**M55342K04B931ARWS**  
RES SMD 931 OHM 0.1% 0.15W 1505  
[Vishay Dale](#)

RFQ



**M55342K03B110ARWS**  
RES SMD 110 OHM 0.1% 1/5W 1005  
[Vishay Dale](#)

RFQ



**M55342K06B45B3RT0**  
RES SMD 45.3KOHM 0.1% 0.15W 0805  
[Vishay Dale](#)

RFQ



**M55342K06B50D5RWSV**  
RES SMD 50.5 OHM 1% 0.15W 0705  
[Vishay Dale](#)

RFQ

