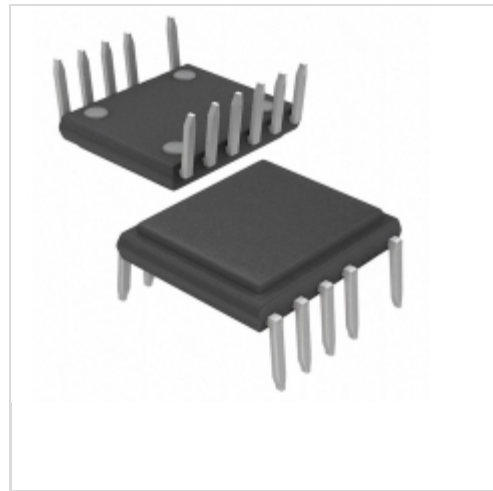


## TOP265VG



### Power Integrations

IC OFFLINE SW PWM OCP OVP 12EDIP

Lead free / RoHS Compliant

Integrated Circuits (ICs)

[TOP265VG.pdf](#)

**Buy Now**

**Out Stock**

**0 pcs**

Minimum:1

Multiples:100

Manufacturer lead time 10 weeks

We can supply Power Integrations TOP265VG, use the request quote form to request TOP265VG price, Power Integrations Datasheet PDF and lead time. Zeanoit.com is a professional electronic components distributor. With 3+ Million line items of available electronic components can ship in short lead-time, over 250 thousand part numbers of electronic components in stock for immediately delivery, which may include part number TOP265VG. The price and lead time for TOP265VG depending on the quantity required, availability and warehouse location.

## Shopping Process

**1**

**Confirm the product**

**2**

**submit the order**

**3**

**payment**

**4**

**wait for delivery**

**5**

**receive the goods**

## Specifications

<b>Voltage - Supply (Vcc/Vdd):</b>	-
<b>Voltage - Breakdown:</b>	725V
<b>Topology:</b>	Flyback
<b>Supplier Device Package:</b>	eDIP-12
<b>Series:</b>	TOPSwitch®-JX
<b>Power (Watts):</b>	36W
<b>Packaging:</b>	Tube
<b>Package / Case:</b>	12-SDIP (0.412", 10.46mm) Exposed Pad
<b>Output Isolation:</b>	Isolated
<b>Operating Temperature:</b>	-40°C ~ 150°C (TJ)
<b>Mounting Type:</b>	Through Hole
<b>Internal Switch(s):</b>	Yes
<b>Frequency - Switching:</b>	66kHz, 132kHz
<b>Fault Protection:</b>	Current Limiting, Over Load, Over Temperature, Over Voltage, Short Circuit
<b>Duty Cycle:</b>	78%
<b>Control Features:</b>	Frequency Control

## Related products



**TOP264KG-TL**  
IC OFFLINE SW 30W 49W 12ESOP  
[Power Integrations](#)

RFQ



**TOP266G**  
[POWER](#)

RFQ



**TOP266KG-TL**  
IC OFFLINE SW 39W 58W 12ESOP  
[Power Integrations](#)

RFQ



**TOP266EG**  
IC OFFLINE SW PWM OCP OVP 7ESIP  
[Power Integrations](#)

RFQ



**TOP265KG**  
IC OFFLINE SW 34W 53W 12ESOP  
[Power Integrations](#)

RFQ



**TOP265EG**  
IC OFFLINE SW PWM OCP OVP 7ESIP  
[Power Integrations](#)

RFQ



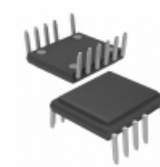
**TOP266KG**  
IC OFFLINE SW 39W 58W 12ESOP  
[Power Integrations](#)

RFQ



**TOP266VG**  
IC OFFLINE SW PWM OCP OVP 12EDIP  
[Power Integrations](#)

RFQ



**TOP264VG**  
IC OFFLINE SW PWM OCP OVP 12EDIP  
[Power Integrations](#)

RFQ



**TOP265KG-TL**  
IC OFFLINE SW 34W 53W 12ESOP  
[Power Integrations](#)

RFQ

## Guess You May Looking For



**CRGV2010F4M02**  
RES SMD 4.02M OHM 1% 1/2W 2010  
[TE Connectivity Passive Product](#)

RFQ



**RNCF0805BTC71K5**  
RES SMD 71.5K OHM 0.1% 1/8W 0805  
[Stackpole Electronics Inc.](#)

RFQ



**ERJ-L14UJ38MU**  
RES SMD 0.038 OHM 5% 1/3W 1210  
[Panasonic Electronic Components](#)

RFQ



**RT0805CRC071K1L**  
RES SMD 1.1K OHM 0.25% 1/8W 0805  
[Yageo](#)

RFQ



**RT0805BRE0788K7L**  
RES SMD 88.7K OHM 0.1% 1/8W 0805  
[Yageo](#)

RFQ



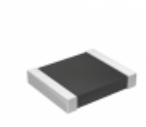
**RT1206CRE07274RL**  
RES SMD 274 OHM 0.25% 1/4W 1206  
[Yageo](#)

RFQ



**AT0402CRD071K15L**  
RES SMD 1.15K OHM 1/16W 0402  
[Yageo](#)

RFQ



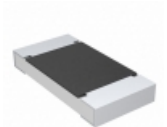
**RT1210DRD07392RL**  
RES SMD 392 OHM 0.5% 1/4W 1210  
[Yageo](#)

RFQ



**RNCF0402BKE931R**  
RES SMD 931 OHM 0.1% 1/16W 0402  
[Stackpole Electronics Inc.](#)

RFQ



**CRCW201012K1FKTF**  
RES SMD 12.1K OHM 1% 3/4W 2010  
[Vishay Dale](#)

RFQ