

**IS42S32160A-75B-TR**

**ISSI (Integrated Silicon Solution, Inc.)**

 IC SDRAM 512MBIT 133MHZ 90BGA  
 Contains lead / RoHS non-compliant  
 Integrated Circuits (ICs)

- [1.IS42S32160A-75B-TR.pdf](#)
- [2.IS42S32160A-75B-TR.pdf](#)

Images are for reference only.

See Product Specifications for product details.

If you are interested to buy IS42S32160A-75B-TR,Just Email us.

[Sales@zeanoit.com](mailto:Sales@zeanoit.com)

our sales team will reply you within 24 hours

## Shopping Process

**1**
**Confirm the product**

**2**
**submit the order**

**3**
**payment**

**4**
**wait for delivery**

**5**
**receive the goods**

## Specifications

<b>Voltage - Supply:</b>	3 V ~ 3.6 V
<b>Supplier Device Package:</b>	90-LFBGA (8x13)
<b>Speed:</b>	133MHz
<b>Series:</b>	-
<b>Packaging:</b>	Tape & Reel (TR)
<b>Package / Case:</b>	90-LFBGA
<b>Operating Temperature:</b>	0°C ~ 70°C (TA)
<b>Memory Type:</b>	Volatile
<b>Memory Size:</b>	512Mb (16M x 32)
<b>Memory Format:</b>	DRAM
<b>Interface:</b>	Parallel

## Related products


**IS42S16800F-7TLI-TR**  
 IC SDRAM 128MBIT 143MHZ 54TSOP  
[ISSI, Integrated Silicon Solution Inc](#)

RFQ


**IS42S32160A-75BL-TR**  
 IC SDRAM 512MBIT 133MHZ 90BGA  
[ISSI, Integrated Silicon Solution Inc](#)

RFQ


**IS42S26400A-7T**  
[ISSI](#)

RFQ


**IS42S32160A-75BI**  
 IC SDRAM 512MBIT 133MHZ 90BGA  
[ISSI, Integrated Silicon Solution Inc](#)

RFQ


**IS42S16800F-7TLI**  
 IC SDRAM 128MBIT 143MHZ 54TSOP  
[ISSI, Integrated Silicon Solution Inc](#)

RFQ


**IS42S32160A-75BLI**  
 IC SDRAM 512MBIT 133MHZ 90BGA  
[ISSI, Integrated Silicon Solution Inc](#)

RFQ


**IS42S32160A-75BL**  
 IC SDRAM 512MBIT 133MHZ 90BGA  
[ISSI, Integrated Silicon Solution Inc](#)

RFQ


**IS42S32160A-75B**  
 IC SDRAM 512MBIT 133MHZ 90BGA  
[ISSI, Integrated Silicon Solution Inc](#)

RFQ

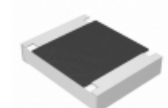

**IS42S32160A**  
 in stock  
[ISSI](#)

RFQ


**IS42S32160A-75BI-TR**  
 IC SDRAM 512MBIT 133MHZ 90BGA  
[ISSI, Integrated Silicon Solution Inc](#)

RFQ

## Guess You May Looking For


**ERJ-14NF9091U**  
 RES SMD 9.09K OHM 1% 1/2W 1210  
[Panasonic Electronic Components](#)

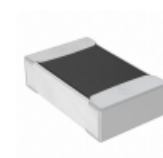
RFQ


**MCR006YRTF2402**  
 RES SMD 24K OHM 1% 1/20W 0201  
[Rohm Semiconductor](#)

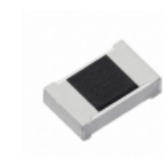
RFQ


**RC1206FR-071M74L**  
 RES SMD 1.74M OHM 1% 1/4W 1206  
[Yageo](#)

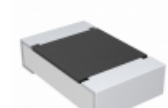
RFQ


**RGC0805FTC301K**  
 RES SMD 301K OHM 1% 1/8W 0805  
[Stackpole Electronics Inc.](#)

RFQ


**ERJ-PA3D68R0V**  
 RES SMD 68 OHM 0.5% 1/4W 0603  
[Panasonic Electronic Components](#)

RFQ


**CRCW0805787KFKEB**  
 RES SMD 787K OHM 1% 1/8W 0805  
[Vishay Dale](#)

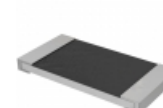
RFQ


**RT0805DRE07715KL**  
 RES SMD 715K OHM 0.5% 1/8W 0805  
[Yageo](#)

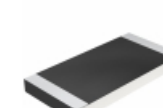
RFQ


**RNCF0402DTC33K2**  
 RES SMD 33.2KOHM 0.5% 1/16W 0402  
[Stackpole Electronics Inc.](#)

RFQ


**RMCF2512JT820R**  
 RES SMD 820 OHM 5% 1W 2512  
[Stackpole Electronics Inc.](#)

RFQ


**CRCW25128R66FNEG**  
 RES SMD 8.66 OHM 1% 1W 2512  
[Vishay Dale](#)

RFQ