

S02-25200300



Harwin

RFI SHIELD CAN 20X25X3MM
Lead free / RoHS Compliant
RF/IF and RFID

- [1.S02-25200300.pdf](#)
- [2.S02-25200300.pdf](#)

Buy Now

In Stock
137 pcs
Minimum:1
Multiples:100
Manufacturer lead time 10 weeks

PRICE	
1 pcs	\$4.03
10 pcs	\$3.60
25 pcs	\$3.24
100 pcs	\$2.952
250 pcs	\$2.664
500 pcs	\$2.39
1000 pcs	\$2.016
2500 pcs	\$1.915
5000 pcs	\$1.843

We can supply Harwin S02-25200300, use the request quote form to request S02-25200300 price, Harwin Datasheet PDF and lead time. Zeanoit.com is a professional electronic components distributor. With 3+ Million line items of available electronic components can ship in short lead-time, over 250 thousand part numbers of electronic components in stock for immediately delivery, which may include part number S02-25200300. The price and lead time for S02-25200300 depending on the quantity required, availability and warehouse location.

Shopping Process

1

Confirm the product

2

submit the order

3

payment

4

wait for delivery

5

receive the goods

Specifications

Width - Overall:	0.80" (20.3mm)
Ventilation:	Non-Vented
Type:	CAN
Series:	EZ BoardWare
Packaging:	Bulk
Mounting Type:	Surface Mount
Length - Overall:	0.984" (25.00mm)
Height - Overall:	0.118" (3.00mm)

Related products



S026-003
CABLE SCSI INTERNAL 3-DRIVE 3'
[Tripp Lite](#)

RFQ



S02-20150300
RFI SHIELD CAN 20X15X3MM
[Harwin Inc.](#)

RFQ



S024-003
CABLE SCSI INTERNAL 2-DRIVE 3'
[Tripp Lite](#)

RFQ



S02-30200250
RFI SHIELD CAN 30X20X2.5MM
[Harwin Inc.](#)

RFQ



S02-20-R-9CS1093
SHIELD TERMINATOR
[TE Connectivity Raychem Cable Protection](#)

RFQ



S02-20-R-90
SHIELD TERMINATOR
[TE Connectivity Raychem Cable Protection](#)

RFQ



S02-20-R-90CS1093
SHIELD TERMINATOR
[TE Connectivity Raychem Cable Protection](#)

RFQ



S02617D
in stock
[HIT](#)

RFQ



S025X075VAC
P1 CASSETTE LABEL VINYL .25
[Panduit Corp](#)

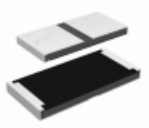
RFQ



S02-20-RCS453
SHIELD TERMINATOR
[TE Connectivity Raychem Cable Protection](#)

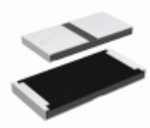
RFQ

Guess You May Looking For



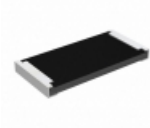
RCP2512W160RJEC
RES SMD 160 OHM 5% 22W 2512
[Vishay Dale](#)

RFQ



RCP2512W1K10JEC
RES SMD 1.1K OHM 5% 22W 2512
[Vishay Dale](#)

RFQ



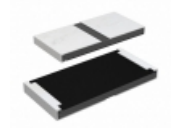
RCP2512B820RGS2
RES SMD 820 OHM 2% 22W 2512
[Vishay Dale](#)

RFQ



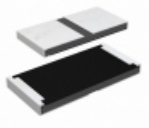
RCP0505W47R0JS2
RES SMD 47 OHM 5% 5W 0505
[Vishay Dale](#)

RFQ



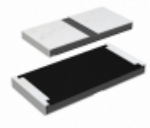
RCP2512W51R0JS2
RES SMD 51 OHM 5% 22W 2512
[Vishay Dale](#)

RFQ



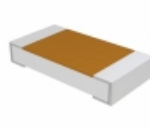
RCP2512W2K00GEC
RES SMD 2K OHM 2% 22W 2512
[Vishay Dale](#)

RFQ



RCP2512W27R0GEC
RES SMD 27 OHM 2% 22W 2512
[Vishay Dale](#)

RFQ



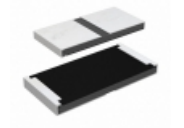
D55342E07B18E7RT5
RES SMD 18.7K OHM 1% 1/4W 1206
[Vishay Dale](#)

RFQ



RW1S0BAR036JE
RES SMD 0.036 OHM 5% 1W J LEAD
[Ohmite](#)

RFQ



RCP2512W1K60GEC
RES SMD 1.6K OHM 2% 22W 2512
[Vishay Dale](#)

RFQ