

LTC4221CGN#PBF



[Linear Technology / Analog Devices](#)

IC CTRLR HOT SWAP DUAL 16SSOP
Lead free / RoHS Compliant
Integrated Circuits (ICs)

[LTC4221CGN#PBF.pdf](#)

Buy Now

Images are for reference only.

See Product Specifications for product details.

If you are interested to buy LTC4221CGN#PBF, Just Email us.

Sales@zeanoit.com

our sales team will reply you within 24 hours

In Stock
591 pcs
Minimum: 1
Multiples: 100
Manufacturer lead time 10 weeks

PRICE	
1 pcs	\$6.16
25 pcs	\$4.09
100 pcs	\$3.50

Shopping Process



Confirm the product



submit the order



payment



wait for delivery



receive the goods

Specifications

Voltage - Supply:	1 V ~ 13.5 V
Type:	Hot Swap Controller
Supplier Device Package:	16-SSOP
Series:	-
Programmable Features:	Auto Retry, Circuit Breaker, Current Limit, Fault Timeout, Latched Fault
Packaging:	Tube
Package / Case:	16-SSOP (0.154", 3.90mm Width)
Operating Temperature:	0°C ~ 70°C
Number of Channels:	2
Mounting Type:	Surface Mount
Internal Switch(s):	No
Features:	OVP, UVLO
Feature Pins:	/FAULT, FILTER, FB1, FB2, ON1, ON2, PWRGD1, PWRGD2, TIMER
Current - Supply:	2.2mA
Current - Output (Max):	-
Applications:	General Purpose

Related products



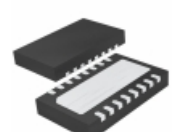
LTC4221CGN#TRPBF
IC CTRLR HOTSWAP DUAL 16SSOP
[Linear Technology](#)

RFQ



LTC4222CG#PBF
IC CTRLR DUAL HOT SWAP 36-SSOP
[Linear Technology](#)

RFQ



LTC4219IDHC-12#PBF
IC CONTROLLER HOT SWAP12A 16DFN
[Linear Technology](#)

RFQ



LTC4221IGN#TRPBF
IC CTRLR HOTSWAP DUAL 16SSOP
[Linear Technology](#)

RFQ



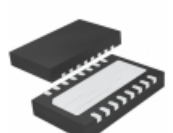
LTC4221
LT

RFQ



LTC4221IGN#PBF
IC CTRLR HOTSWAP DUAL 16SSOP
[Linear Technology](#)

RFQ



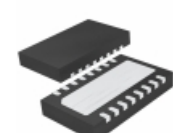
LTC4219IDHC-5#PBF
IC CONTROLLER HOT SWAP 5A 16DFN
[Linear Technology](#)

RFQ



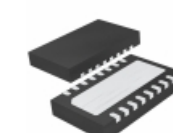
LTC4221IGN
LT

RFQ



LTC4219IDHC-12#TRPBF
IC CONTROLLER HOT SWAP12A 16DFN
[Linear Technology](#)

RFQ



LTC4219IDHC-5#TRPBF
IC CONTROLLER HOT SWAP 5A 16DFN
[Linear Technology](#)

RFQ

Guess You May Looking For



TNPW080559R0BETA
RES SMD 59 OHM 0.1% 1/8W 0805
[Vishay Dale](#)

RFQ



CRCW2512976RFKEGHP
RES SMD 976 OHM 1% 1.5W 2512
[Vishay Dale](#)

RFQ



RT1206BRC0713R3L
RES SMD 13.3 OHM 0.1% 1/4W 1206
[Yageo](#)

RFQ



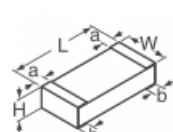
TNPW04025K23BETD
RES SMD 5.23KOHM 0.1% 1/16W 0402
[Vishay Dale](#)

RFQ



RPC2512FT9K09
RES SMD 9.09K OHM 1% 1.5W 2512
[Stackpole Electronics Inc.](#)

RFQ



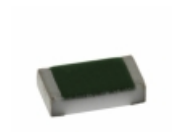
RPC2512FT3M30
RES SMD 3.3M OHM 1% 1.5W 2512
[Stackpole Electronics Inc.](#)

RFQ



RT0603WRD07316RL
RES SMD 316 OHM 0.05% 1/10W 0603
[Yageo](#)

RFQ



TNPW0603274KBETA
RES SMD 274K OHM 0.1% 1/10W 0603
[Vishay Dale](#)

RFQ



CSS2010FT80L0
RES SMD 0.08 OHM 1% 1W 2010
[Stackpole Electronics Inc.](#)

RFQ



RT0603WRC071K43L
RES SMD 1.43K OHM 1/10W 0603
[Yageo](#)

RFQ