

M4Z32-BR00SH1



STMicroelectronics

IC SNAPHAT BATTERY 120MAH 28SOIC

Lead free / RoHS Compliant

Integrated Circuits (ICs)

[M4Z32-BR00SH1.pdf](#)

Buy Now

We can supply STMicroelectronics M4Z32-BR00SH1, use the request quote form to request M4Z32-BR00SH1 price, STMicroelectronics Datasheet PDF and lead time. Zeanoit.com is a professional electronic components distributor. With 3+ Million line items of available electronic components can ship in short lead-time, over 250 thousand part numbers of electronic components in stock for immediate delivery, which may include part number M4Z32-BR00SH1. The price and lead time for M4Z32-BR00SH1 depending on the quantity required, availability and warehouse location.

In Stock

678 pcs

Minimum:1

Multiples:1

Manufacturer lead time 10 weeks

PRICE

1 pcs	\$6.55
10 pcs	\$5.913
100 pcs	\$4.895
500 pcs	\$4.263
1000 pcs	\$3.713

Shopping Process

1

Confirm the product

2

submit the order

3

payment

4

wait for delivery

5

receive the goods

Specifications

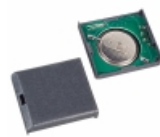
Voltage - Supply:	-
Supplier Device Package:	Snaphat®
Shipping Info:	Due to restrictions, only ground shipment is allowed.
Series:	Snaphat®
Packaging:	Tube
Package / Case:	Snaphat®
Operating Temperature:	-40°C ~ 85°C
Mounting Type:	Snap-In
Function:	Back-Up Management
Battery Chemistry:	Lithium

Related products



DS1260-100
IC SMART BATTERY 3V 16-DIP
[Maxim Integrated](#)

RFQ



DS9034PCI+
IC SRAM NV TIMEKEEPING POWERCAP
[Maxim Integrated](#)

RFQ



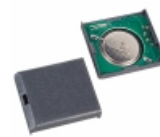
DS1260-50
IC SMART BATTERY 500MAH 16-DIP
[Maxim Integrated](#)

RFQ



M4Z28-BR00SH1
IC SNAPHAT BATTERY 48MAH 28-SOIC
[STMicroelectronics](#)

RFQ



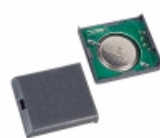
DS9034PC
PCM W/O CRYSTAL NV SRAM SNAP-ON
[Maxim Integrated](#)

RFQ



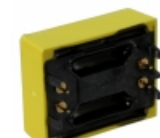
DS90340I-PCX
IC SRAM NV TIMEKEEPING POWERCAP
[Maxim Integrated](#)

RFQ



DS9034I-PCX+
IC SRAM NV TIMEKEEPING POWERCAP
[Maxim Integrated](#)

RFQ



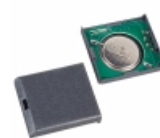
M4Z32-BR00SH1
IC SNAPHAT BATTERY 120MAH 28SOIC
[STMicroelectronics](#)

RFQ



DS1260-25
IC SMART BATTERY 250MAH 16-DIP
[Maxim Integrated](#)

RFQ



DS9034PCX+
PCM W/CRYSTAL NV SRAM SNAP-ON
[Maxim Integrated](#)

RFQ

Guess You May Looking For



AT1206DRE07180KL
RES SMD 180K OHM 0.5% 1/4W 1206
[Yageo](#)

RFQ



AT1206DRE07180RL
RES SMD 180 OHM 0.5% 1/4W 1206
[Yageo](#)

RFQ



AT1206DRE07187RL
RES SMD 187 OHM 0.5% 1/4W 1206
[Yageo](#)

RFQ



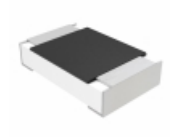
AT1206DRE07191RL
RES SMD 191 OHM 0.5% 1/4W 1206
[Yageo](#)

RFQ



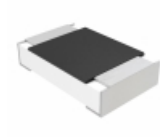
AT1206DRE071K2L
RES SMD 1.2K OHM 0.5% 1/4W 1206
[Yageo](#)

RFQ



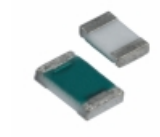
MCU08050C8201FP500
RES SMD 8.2K OHM 1% 1/5W 0805
[Vishay Beyschlag](#)

RFQ



MCU08050D8252DP500
RES SMD 82.5K OHM 0.5% 1/5W 0805
[Vishay Beyschlag](#)

RFQ



RL0816S-R75-F
RES SMD 0.75 OHM 1% 1/5W 0603
[Susumu](#)

RFQ



AT1206DRE07162KL
RES SMD 162K OHM 0.5% 1/4W 1206
[Yageo](#)

RFQ



AT1206DRE071K82L
RES SMD 1.82K OHM 0.5% 1/4W 1206
[Yageo](#)

RFQ