

## TCK104G,LF



### Toshiba Semiconductor and Storage

IC POWER DIST LOAD SWITCH 6WCSP

Lead free / RoHS Compliant

Integrated Circuits (ICs)

[TCK104G,LF.pdf](#)

**Buy Now**

We can supply TCK104G,LF, use the request quote form to request TCK104G,LF price and lead time. Zeano is a professional electronic components distributor. With 3+ Million line items of available electronic components can ship in short lead-time, over 250 thousand part numbers of electronic components in stock for immediately delivery, which may include part number TCK104G,LF. The price and lead time for TCK104G,LF depending on the quantity required and warehouse location. Contact us and our sales representative will provide you price. We look forward to work with you.

**Out Stock**  
**0 pcs**  
Minimum: 1  
Multiples: 100  
Manufacturer lead time 10 weeks

PRICE	
1 pcs	\$0.68
10 pcs	\$0.577
25 pcs	\$0.505
100 pcs	\$0.433
250 pcs	\$0.375
500 pcs	\$0.317
1000 pcs	\$0.245

## Shopping Process

**1**

Confirm the product

**2**

submit the order

**3**

payment

**4**

wait for delivery

**5**

receive the goods

## Specifications

<b>Voltage - Supply (Vcc/Vdd):</b>	Not Required
<b>Voltage - Load:</b>	1.1 V ~ 5.5 V
<b>Switch Type:</b>	General Purpose
<b>Supplier Device Package:</b>	6-WCSPB (0.80x1.2)
<b>Series:</b>	-
<b>Rds On (Typ):</b>	50 mOhm
<b>Ratio - Input:Output:</b>	1:1
<b>Packaging:</b>	Original-Reel®
<b>Package / Case:</b>	6-UFBGA, WLCSP
<b>Output Type:</b>	P-Channel
<b>Output Configuration:</b>	High Side
<b>Operating Temperature:</b>	-40°C ~ 85°C (TA)
<b>Number of Outputs:</b>	1
<b>Interface:</b>	On/Off
<b>Input Type:</b>	Non-Inverting
<b>Features:</b>	Load Discharge, Slew Rate Controlled
<b>Fault Protection:</b>	Current Limiting (Fixed), Over Temperature
<b>Current - Output (Max):</b>	800mA

## Related products



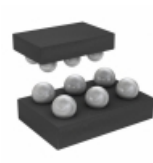
**TCK102G,LF**  
IC POWER DIST LOAD SWITCH 6WCSP  
[Toshiba Semiconductor and Storage](#)

RFQ

**TOSHIBA**  
Leading Innovation >>>

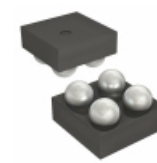
**TCK107AG,LF(S)**  
[TOSHIBA](#)

RFQ



**TCK105G,LF**  
IC POWER DIST LOAD SWITCH 6WCSP  
[Toshiba Semiconductor and Storage](#)

RFQ



**TCK106G,LF**  
IC POWER DIST LOAD SWITCH 4WCSP  
[Toshiba Semiconductor and Storage](#)

RFQ



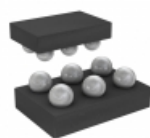
**TCK101G,LF**  
IC POWER DIST LOAD SWITCH 6WCSP  
[Toshiba Semiconductor and Storage](#)

RFQ



**TCK107AG,LF**  
IC POWER DIST LOAD SWITCH 4WCSP  
[Toshiba Semiconductor and Storage](#)

RFQ



**TCK1024G,LF**  
IC PWR SWITCH P-CHAN 1:1 WCSP6E  
[Toshiba Semiconductor and Storage](#)

RFQ

**TOSHIBA**  
Leading Innovation >>>

**TCK106AG**  
[TOSHIBA](#)

RFQ



**TCK106AF,LF**  
IC POWER DIST LOAD SWITCH SMV  
[Toshiba Semiconductor and Storage](#)

RFQ



**TCK106AG,LF**  
IC POWER DIST LOAD SWITCH 4WCSP  
[Toshiba Semiconductor and Storage](#)

RFQ

## Guess You May Looking For



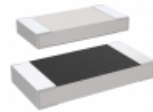
**RG3216V-1272-W-T1**  
RES SMD 12.7KOHM 0.05% 1/4W 1206  
[Susumu](#)

RFQ



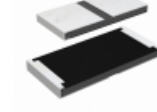
**RG3216V-6190-P-T1**  
RES SMD 619 OHM 0.02% 1/4W 1206  
[Susumu](#)

RFQ



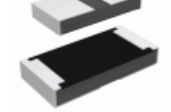
**M55342H03B1B00RT1**  
RES SMD 1K OHM 0.1% 1/5W 1005  
[Vishay Dale](#)

RFQ



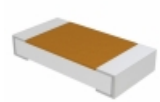
**RCP2512W43R0GET**  
RES SMD 43 OHM 2% 22W 2512  
[Vishay Dale](#)

RFQ



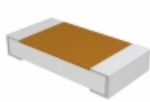
**RCP1206W39R0JWB**  
RES SMD 39 OHM 5% 11W 1206  
[Vishay Dale](#)

RFQ



**D55342H07B1B58RWS**  
RES SMD 1.58K OHM 0.1% 1/4W 1206  
[Vishay Dale](#)

RFQ



**D55342K07B301DRWSV**  
RES SMD 301 OHM 1% 1/4W 1206  
[Vishay Dale](#)

RFQ



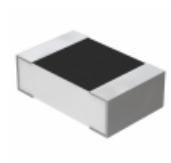
**M55342E06B92B0RWS**  
RES SMD 92K OHM 0.1% 0.15W 0705  
[Vishay Dale](#)

RFQ



**M55342K02B210BRWS**  
RES SMD 210K OHM 0.1% 1/8W 0505  
[Vishay Dale](#)

RFQ



**Y163013K2200T9R**  
RES SMD 13.22K OHM 1/4W 1206  
[Vishay Foil Resistors \(Division of Vishay Precisio](#)

RFQ

